

PHUSE TAKE-UP FRAMES



European Metric and American Standard Industrial Power Transmission Products

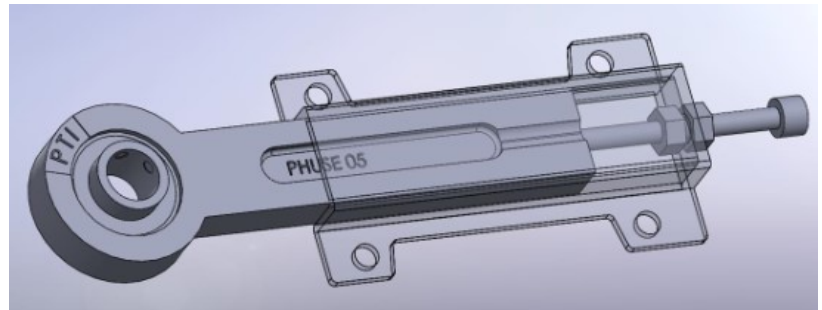
PTI PHUSE Series Take-Up Frames provide for a simple and economical solution in a wide range of applications requiring the ability to adjust belt tension, such as Unit Handling, Packaging, and Conveying. They feature a Cast Iron housing for the bearing and a Plate Steel cover connected to a threaded rod to allow for tensioning.



Adjustment range shown above

KEY FEATURES

- Interchangeable with Competitive Brands
- Compact Design
- Side Mount
- Easy Adjustment
- 5 Sizes, 25-50mm and 7/8" - 2" Bore
- Up to 80mm (3.15)" of Travel



AVAILABLE SIZES

Frame Size	Bore Sizes	Housing Size	Cover Size
PHUSE205	25mm, 7/8", 15/16", 1"	HUSE205	HUSE05-06-07
PHUSE206	30mm, 1-1/8", 1-3/16", 1-1/4"	HUSE206	HUSE05-06-07
PHUSE207	35mm, 1-1/4", 1-3/8", 1-7/16"	HUSE207	HUSE05-06-07
PHUSE208	40mm, 1-1/2"	HUSE208	HUSE08-10
PHUSE210	50mm, 1-7/8", 1-15/16", 2"	HUSE210	HUSE08-10



PHUSE 205 and PHUSE 210
(Without Covers)

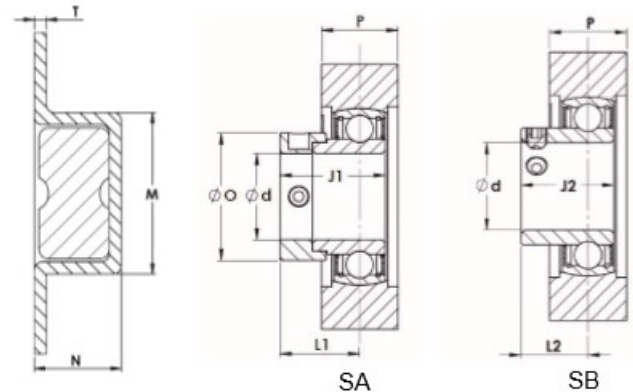
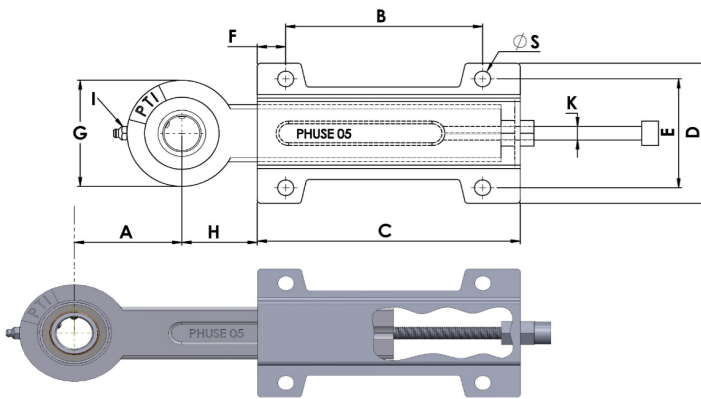


PTI Corporate Headquarters Charlotte, NC - USA
24/7 Inside Sales: 704-588-1091 Toll-Free: 800-763-4434
ptinfo@ptintl.com

www.ptintl.com

PHUSE TAKE-UP FRAMES

DIMENSIONS



Part No. with SA Eccentric Collar Bearing	Part No. with SB Set Screw Bearing	Shaft Size d	Dimensions (mm / in)																				Housing + Slide Frame	SA Eccentric Collar Insert Bearing	SB Set Screw Insert Bearing	Wt. kg
			Travel A	B	C	D	E	F	G	H	I	J1	J2	K	L1	L2	M	N	O	P	S	T				
PHUSE205-25MM	PHUSE205-25MMS	25mm	65	140	187	103	80	20	78	50	R1/8	31	27.0	M12	23.5	19.5	52	28	37.5	22	11.5	4	HUSE205	SA205-25MM	SB205-25MM	2.1
PHUSE205-14	PHUSE205-14S	7/8	2.56	5.51	7.36	4.06	3.15	0.79	3.07	1.97	R1/8	1.22	1.06	M12	0.93	0.77	2.05	1.10	1.48	0.87	0.45	0.16	HUSE205	SA205-14	SB205-14	
PHUSE205-15	PHUSE205-15S	15/16																					HUSE205	SA205-15	SB205-15	
PHUSE205-16	PHUSE205-16S	1																					HUSE205	SA205-16	SB205-16	
PHUSE206-30MM	PHUSE206-30MMS	30mm	65	140	187	103	80	20	88	50	R1/8	35.8	30.0	M12	27.7	22	52	28	44	22	11.5	4	HUSE206	SA206-30MM	SB206-30MM	2.2
PHUSE206-18	PHUSE206-18S	1-1/8	2.56	5.51	7.36	4.06	3.15	0.79	3.46	1.97	R1/8	1.41	1.18	M12	1.09	0.87	2.05	1.10	1.73	0.87	0.45	0.16	HUSE206	SA206-18	SB206-18	
PHUSE206-19	PHUSE206-19S	1-3/16																					HUSE206	SA206-19	SB206-19	
PHUSE206-20	PHUSE206-20S	1-1/4																					HUSE206	SA206-20	SB206-20	
PHUSE207-35MM	PHUSE207-35MMS	35mm	65	140	187	103	80	20	98	50	R1/8	38.9	32.0	M12	30.4	23.5	52	28	51	22	11.5	4	HUSE207	SA207-35MM	SB207-35MM	2.5
PHUSE207-20	PHUSE207-20S	1-1/4	2.56	5.51	7.36	4.06	3.15	0.79	3.86	1.97	R1/8	1.53	1.26	M12	1.20	0.93	2.05	1.10	2.01	0.87	0.45	0.16	HUSE207	SA207-20	SB207-20	
PHUSE207-22	PHUSE207-22S	1-3/8																					HUSE207	SA207-22	SB207-22	
PHUSE207-23	PHUSE207-23S	1-7/16																					HUSE207	SA207-23	SB207-23	
PHUSE208-40MM	PHUSE208-40MMS	40mm	80	180	256	130	100	20	108	60	R1/8	43.7	34.0	M16	34.7	25	60	36	58	30	14	4	HUSE208	SA208-40MM	SB208-40MM	4.9
PHUSE208-24	PHUSE208-24S	1-1/2	3.15	7.09	10.08	5.12	3.94	0.79	4.25	2.36	R1/8	1.72	1.34	M16	1.37	0.98	2.36	1.42	2.28	1.18	0.55	0.16	HUSE208	SA208-24	SB208-24	
PHUSE210-50MM	PHUSE210-50MMS	50mm	80	180	256	130	100	20	120	60	R1/8	43.7	43.5	M16	34.2	32.6	60	36	69	30	14	4	HUSE210	SA210-50MM	SB210-50MM	5.3
PHUSE210-30	PHUSE210-30S	1-7/8	3.15	7.09	10.08	5.12	3.94	0.79	4.72	2.36	R1/8	1.72	1.71	M16	1.35	1.28	2.36	1.42	2.72	1.18	0.55	0.16	HUSE210	SA210-30	SB210-30	
PHUSE210-31	PHUSE210-31S	1-15/16																					HUSE210	SA210-31	SB210-31	
PHUSE210-32	PHUSE210-32S	2																					HUSE210	SA210-32	SB210-32	

Note: Bearings with a concentric locking collar or adapter mount are available from stock.

PLEASE NOTE:

Dimensions and part numbers shown are for PTI Series Bearings

Euro Series inserts are also available (Setscrew and Eccentric) - L1 and L2 dimensions are slightly different with Euro Series inserts

PTI Series inserts are also available with concentric clamp collar (CL) and tapered adapter sleeve (GSH)



PTI Corporate Headquarters Charlotte, NC - USA
24/7 Inside Sales: 704-588-1091 Toll-Free: 800-763-4434
ptinfo@ptintl.com

www.ptintl.com

FL008—03.2018