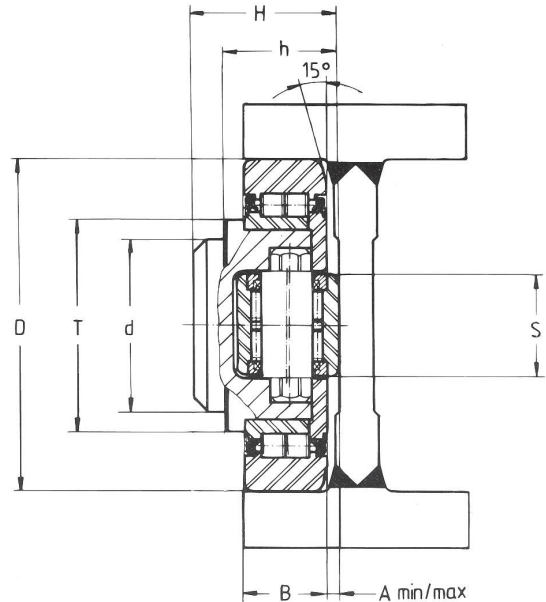
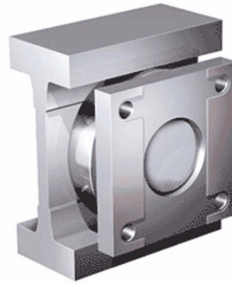
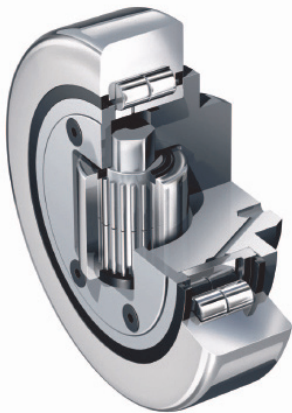


Axial Bearing Adjustable



The adjustment of dimension A is obtained by removing the face plate and turning the eccentric shaft of the thrust bearing. The shaft contains an offset and has 8 adjustment positions. The radial bearing can be relubricated.

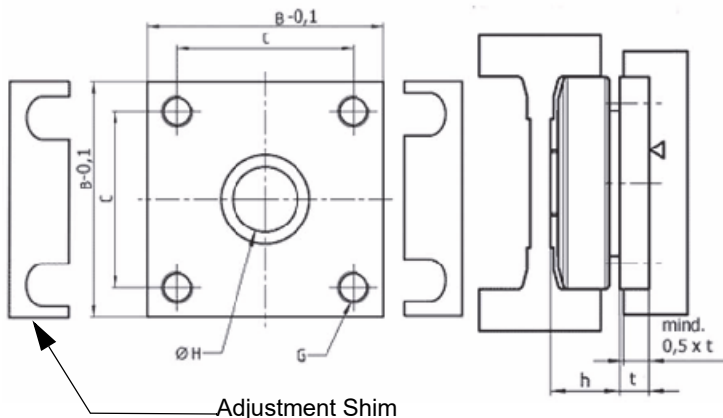
Jumbo Bearings with Oilamide Insert are available on request.

Models Available: www.winkel.de

Bearing Only Part No.	Dimensions								Profile Ratings		Bearing Ratings					Wt. kg	Flange Plate Part No.	Profile Part No. *
	A mm	B mm	D mm	d (-0.05mm)	H mm	h mm	S mm	T mm	F _R kN	F _A kN	C kN	C _O kN	C _A kN	C _{OA} kN	RPM max			
W-4.085	6.5-9.5	57.3	180	100	95.7-98.7	76.3-79.3	60	124	76.0	22.8	207	243	73	83	100	11.5	W-AP 90-Q	W-8 NbV
W-4.089	5.0-8.0	40	165	80	69.0-72.0	53.0-56.0	50	113	41.7	13.9	213	388	85	133	120	9.2	W-AP 89-Q	W-10 NbV
W-4.090	6.5-9.5	48	190	100	84.5-87.5	64.5-67.5	60	124	58.0	19.4	266	500	100	180	100	10.6	W-AP 90-Q	W-16 NbV
W-4.091	6.5-9.5	58	220	110	94.5-97.5	74.5-77.5	75	146	84.0	28.0	326	681	138	257	90	17.3	W-AP 91-Q	W-18 NbV
W-4.092	7.0-10.0	60	250	120	102.0-105.0	77.0-80.0	75	168	101.5	33.9	369	748	138	257	75	23.9	W-AP 92-Q	W-28 NbV
W-4.093	7.5-11.5	72	280	150	119.5-123.5	89.5-93.5	90	188	139.4	46.5	489	1066	182	488	50	36.0	W-AP 93-Q	W-36 NbV W-42 NbV
W-4.094	10.0-14.0	85	320	150	135.0-139.0	110.0-114.0	85	218	192.0	57.7	542	1370	210	422	50	50	W-AP 93-Q	W-50 NbV

Note: *Profiles W-10 NbV and larger are fabricated. Assembly part number example...W-4.089/AP89Q.

Flange Plates



Flange Plate Part No.	Dimensions (mm)					
	B	C	G	ØH	h	t
W-AP 89-Q	165	125	M20	80	53.0-56.0	23
W-AP 90-Q (4.085 + W-AP 90-Q)	190	150	M20	100	64.5-67.5 (76.0-79.3)	28
W-AP 91-Q	220	176	M24	110	74.5-77.5	33
W-AP 92-Q	250	206	M24	120	77.0-80.0	37
W-AP 93-Q	280	220	M30	150	89.5-93.5	37