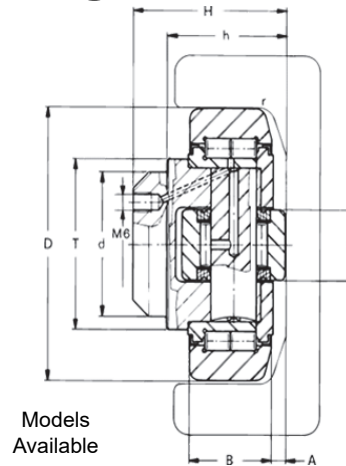
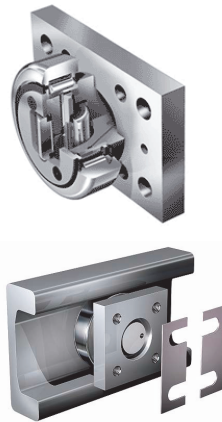
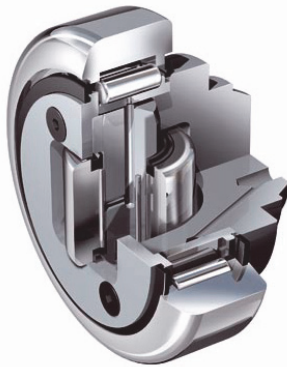


Fixed Axial Bearing



Models Available

High Temp Units
(to 480°F)
Available on
Request

Standard Fixed Axial Bearing

Relubrication for sizes 4.054 thru 4.063

Bearing only Part No.	Bearing with Rectangular Flange Plate Part No.	Bearing with Square Flange Plate Part No.	Dimensions										Brg Wt. kg	Profile Part No.
			A mm	B mm	d (-0.05mm)	D* mm	h mm	H mm	r mm	S mm	T mm	RPM max		
W-4.053■	W-4.053/APS	W-4.053/APS-Q	5	17	30	52.5	27	33	2	15	40	800	0.46	W-S
W-4.054	W-4.054/AP0	W-4.054/AP0-Q	2.5	20	30	62.5	30.5	37.5	3	20	42	900	0.53	W-0 NbV
W-4.055■	W-4.055/AP1	W-4.055/AP1-Q	2.5	23	35	70.1	36	44	4	22	48	900	0.80	W-1 NbV W-3018 NbV
W-4.056■	W-4.056/AP2	W-4.056/AP2-Q	3	23	40	77.7	36.5	48	4	26	54	800	1.00	W-2 NbV
W-4.057	**	**	3	23	40	77.7	29	40	4	26	53	800	0.87	W-3019 NbV
W-4.058	W-4.058/AP3.1	W-4.058/AP3-Q	3.5	30	45	88.4	44	57	3	26	59	750	1.62	W-3 NbV W-3020 NbV
W-4.059	**	**	3	28	50	101.2	33	46	3	30	67	700	1.74	W-2912 NbV
W-4.060	**	**	3	31	55	107.7	39	53	5	34	71	650	2.27	W-3100 NbV
W-4.061	W-4.061/AP4	W-4.061/AP4-Q	4	31	60	107.7	55	69	5	34	71	650	2.82	W-4 NbV
W-4.062	W-4.062/AP4	W-4.062/AP4-Q	5	37	60	123	56	72.3	5	40	80	550	3.89	W-5 NbV W-3353 NbV
W-4.063	W-4.063/AP6	W-4.063/AP6-Q	5.5	43	60	149	58.5	78.5	3	50	103	450	6.52	W-6 NbV

Profile & Bearing Load Ratings

Models available: www.winkel.de

Bearing only Part No.	Profile		Max Static Radial Load on Profile F_R kN		Max Static Axial Load on Profile F_A kN		Dynamic Load Capacity of Radial Brg C kN	Static Load Capacity of Radial Brg C_0 kN	Dynamic Load Capacity of Axial Brg C_A kN	Static Load Capacity of Axial Brg C_{0A} kN
	U-Profile	I-Profile	U-Profile	I-Profile	U-Profile	I-Profile				
W-4.053	S	—	5.23	—	1.68	—	24.0	32.0	7	7
W-4.054	0 NbV	—	10.30	—	3.20	—	31.0	35.5	11	11
W-4.055	1 NbV	3018 NbV	12.40	12.40	3.87	3.87	45.5	51.0	13	14
W-4.056	2 NbV	—	12.90	—	4.00	—	48.0	56.8	18	18
W-4.057	—	3019 NbV	—	12.90	—	3.87	48.0	56.8	18	18
W-4.058	3 NbV	3020 NbV	22.40	22.40	7.00	7.00	68.0	72.0	23	23
W-4.059	—	2912 NbV	—	22.00	—	7.00	73.0	82.0	25	27
W-4.060	—	3100 NbV	—	23.80	—	7.44	81.0	95.0	31	36
W-4.061	4 NbV	—	23.80	—	7.44	—	81.0	95.0	31	36
W-4.062	5 NbV	3353 NbV	33.90	26.00	10.60	10.60	110.0	132.0	43	50
W-4.063	6 NbV	—	59.20	—	18.50	—	151.0	192.0	68	71

Note: * OD has a slight crown to accommodate misalignments. ** Flange Plates available on request. Bearings with 2RS Seals.

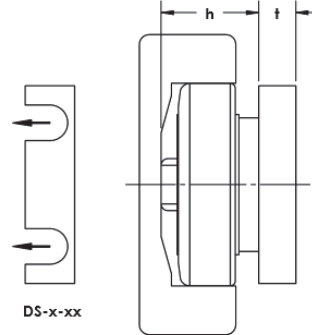
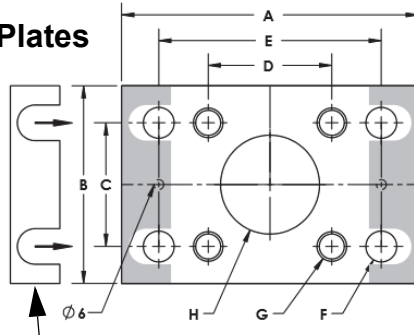
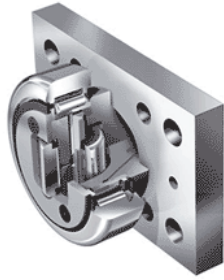
■ These sizes available in stainless (INOX), ratings will be lower.

WINKEL Combined Bearings

Fixed Axial Bearing



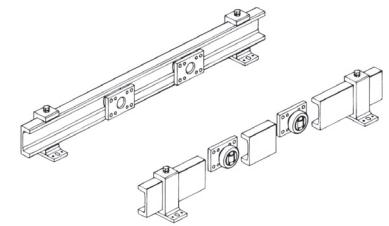
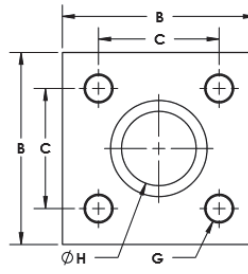
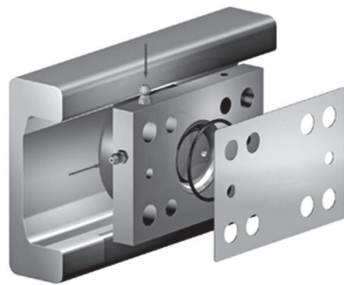
Rectangular Flange Plates



Square Flange Plates

Adjustment Shim

Clamp Flange



Optional Flange Plates with Re-Lube Feature

Flange Plate Detail

Bearing with Rectangular Flange Plate Part No.	Bearing with Square Flange Plate Part No.	Dimensions										Flange Plate Only	
		A mm	B mm	C mm	D mm	E mm	ØF mm	G	ØH mm	h mm	t mm	Rectangular Part No.	Square Part No.
W-4.053/APS	W-4.053/APS-Q	90	50	30	40	70	8.5	M8	30	27.0	10	W-APS	W-APS-Q
W-4.054/AP0	W-4.054/AP0-Q	100	60	40	40	80	10.5	M10	30	30.5	10	W-AP0	W-AP0-Q
W-4.055/AP1	W-4.055/AP1-Q	120	80	50	50	90	12.5	M12	35	36.0	15	W-AP1	W-AP1-Q
W-4.056/AP2	W-4.056/AP2-Q	120	80	50	50	90	12.5	M12	40	36.5	15	W-AP2	W-AP2-Q
W-4.058/AP3.1	—	160	100	60	60	120	17.0	M16	45	44.0	20	W-AP3.1	—
—	W-4.058/AP3-Q	—	120	90	—	—	—	M16	45	44.0	20	—	W-AP3-Q
W-4.061/AP4	W-4.061/AP4-Q	180	120	80	80	140	17.0	M16	60	55.0	20	W-AP4	W-AP4-Q
W-4.062/AP4	W-4.062/AP4-Q	180	120	80	80	140	17.0	M16	60	56.0	20	W-AP4	W-AP4-Q
W-4.063/AP6	W-4.063/AP6-Q	200	150	100	100	160	17.0	M16	60	58.5	20	W-AP6	W-AP6-Q

Adjustment Shims for Flange Bearings

Bearing Size	0.5 mm Shim Part No.	1.0 mm Shim Part No.
W-4.053	W-DS-S-0.5	W-DS-S-1.0
W-4.054	W-DS-0-0.5	W-DS-0-1.0
W-4.055	W-DS-1-0.5	W-DS-1-1.0
W-4.056	W-DS-2-0.5	W-DS-2-1.0
W-4.058	W-DS-3-0.5	W-DS-3-1.0
W-4.061	W-DS-4-0.5	W-DS-4-1.0
W-4.062	W-DS-4-0.5	W-DS-4-1.0
W-4.063	W-DS-6-0.5	W-DS-6-1.0

Clamp Flanges for Mounting Profile

Part No.	Profile Size
W-KF S	S
W-KF 0	0 NbV
W-KF 1	1 NbV
W-KF 2	2 NbV
W-KF 3	3 NbV
W-KF 4	4 NbV

See Clamp Flange Section for Dimensions

Precision Fixed Axial Bearings requires Precision Profile

Bearing Only Part No. *	Bearing with Rectangular Flange Part No.	Bearing with Square Flange Part No.	D Bearing OD	Profile Size
W-PR4.054	W-PR4.054/AP0	W-PR4.054/AP0-Q	64.8	W-PR0 NbV
W-PR4.055	W-PR4.055/AP1	W-PR4.055/AP1-Q	73.8	W-PR1 NbV
W-PR4.056	W-PR4.056/AP2	W-PR4.056/AP2-Q	81.8	W-PR2 NbV
W-PR4.058	W-PR4.058/AP3.1	W-PR4.058/AP3-Q	92.8	W-PR3 NbV
W-PR4.061	W-PR4.061/AP4	W-PR4.061/AP4-Q	111.8	W-PR4 NbV
W-PR4.062	W-PR4.062/AP4	W-PR4.062/AP4-Q	127.8	W-PR5 NbV
W-PR4.063	W-PR4.063/AP6	W-PR4.063/AP6-Q	153.8	W-PR6 NbV

Note: *Precision (PR) Bearing fit within the profile is more precise.