

SPA Metric V-Belt Sheaves - Taper Bushed



Models Available

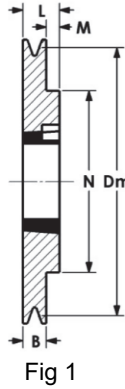


Fig 1

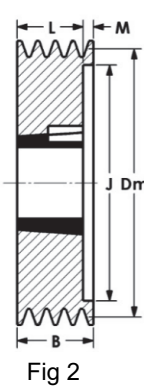


Fig 2

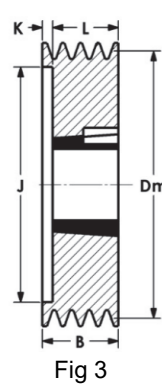


Fig 3

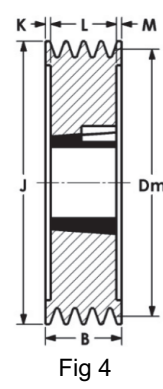


Fig 4

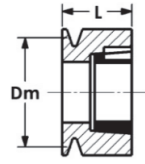


Fig 9

Dimensions in mm

Part No.	Dm	Groove	Bushing	Max Bore	Figure	B	J	K	L	M	N	Wt. kg
SPA63 x 1-1108	63	1	1108	28	9	20	31	18	40	—	68.5	0.6
SPA63 x 2-1108		2	1108	28	9	35	31	33	55	—	68.5	0.8
SPA67 x 1-1108	67	1	1108	28	1	20	—	—	22	2	60	0.3
SPA67 x 2-1108		2	1108	28	3	35	35	13	22	—	—	0.5
SPA71 x 1-1108	71	1	1108	28	1	20	—	—	22	2	60	0.3
SPA71 x 2-1108		2	1108	28	3	35	39	13	22	—	—	0.5
SPA71 x 3-1108		3	1108	28	3	50	39	28	22	—	—	0.7
SPA75 x 1-1108	75	1	1108	28	1	20	—	—	22	2	60	0.4
SPA75 x 2-1108		2	1108	28	3	35	43	13	22	—	—	0.6
SPA75 x 3-1108		3	1108	28	3	50	43	28	22	—	—	0.8
SPA80 x 1-1210	80	1	1210	32	1	20	—	—	25	5	80	0.5
SPA80 x 2-1210		2	1210	32	3	35	50	10	25	—	—	0.6
SPA80 x 3-1210		3	1210	32	3	50	50	25	25	—	—	0.9
SPA85 x 1-1210	85	1	1210	32	1	20	—	—	25	5	80	0.6
SPA85 x 2-1210		2	1210	32	3	35	55	10	25	—	—	0.7
SPA85 x 3-1210		3	1210	32	3	50	55	25	25	—	—	1.0
SPA90 x 1-1210	90	1	1210	32	1	20	—	—	25	5	80	0.7
SPA90 x 2-1610		2	1610	42	3	35	60	10	25	—	—	0.7
SPA90 x 3-1610		3	1610	42	3	50	60	23.5	26.5	—	—	1.0
SPA90 x 4-1610		4	1610	42	3	65	60	40	25	—	—	1.2
SPA95 x 1-1210	95	1	1210	32	1	20	—	—	25	5	80	0.8
SPA95 x 2-1610		2	1610	42	3	35	65	10	25	—	—	0.9
SPA95 x 3-1610		3	1610	42	3	50	65	23.5	26.5	—	—	1.1
SPA95 x 4-1610		4	1610	42	3	65	65	40	25	—	—	1.4
SPA100 x 1-1610	100	1	1610	42	1	20	—	—	25	5	92	0.8
SPA100 x 2-1610		2	1610	42	3	35	65	10	25	—	—	0.9
SPA100 x 3-1610		3	1610	42	2	50	65	—	25	25	—	1.2
SPA100 x 4-1610		4	1610	42	2	65	65	—	25	40	—	1.7
SPA100 x 5-1610		5	1610	42	3	80	65	55	25	—	—	1.9
SPA100 x 6-1610		6	1610	42	4	95	65	30	25	40	—	2.3
SPA106 x 1-1610	106	1	1610	42	1	20	—	—	25	5	92	0.9
SPA106 x 2-1610		2	1610	42	3	35	70	10	25	—	—	1.1
SPA106 x 3-1610		3	1610	42	2	50	70	—	25	25	—	1.4
SPA106 x 4-2012		4	2012	50	3	65	70	33	32	—	—	2.0
SPA106 x 5-2012		5	2012	50	3	80	70	48	32	—	—	2.0
SPA106 x 6-2012		6	2012	50	3	95	70	63	32	—	—	2.4
SPA112 x 1-1610	112	1	1610	42	1	20	—	—	25	5	92	1.0
SPA112 x 2-1610		2	1610	42	3	35	77	10	25	—	—	1.2
SPA112 x 3-2012		3	2012	50	3	50	77	18	32	—	—	1.3
SPA112 x 4-2012		4	2012	50	3	65	77	33	32	—	—	1.9
SPA112 x 5-2012		5	2012	50	3	80	77	48	32	—	—	2.1
SPA112 x 6-2012		6	2012	50	3	95	77	63	32	—	—	2.4
SPA118 x 1-1610	118	1	1610	42	1	20	—	—	25	5	85	1.2
SPA118 x 2-1610		2	1610	42	3	35	84	10	25	—	—	1.4
SPA118 x 3-2012		3	2012	50	2	50	84	—	32	18	—	1.8
SPA118 x 4-2012		4	2012	50	2	65	84	—	32	33	—	2.0
SPA118 x 5-2012		5	2012	50	2	80	84	—	32	48	—	2.4
SPA118 x 6-2012		6	2012	50	3	95	84	63	32	—	—	2.7