

# Metric Timing Pulleys



## AT Series - 10 mm Pitch Aluminum, Pilot Bore

**Part No:** 40AT10/20-2

40 = Length thru Bore

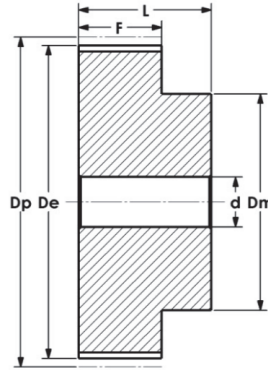
AT10 = Tooth Profile and Pitch

20 = Number of Teeth

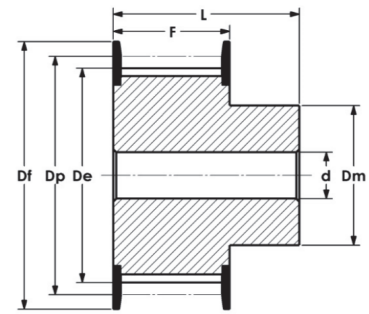
2 = Number of Flanges



Models Available



Type 6



Type 6F

### AT 10 mm Pitch x 25 mm Belt Width

Dimensions in mm

Part No.	Part Code	Teeth	Type	Dp	De	Df	Dm	F	L	d	Wt. kg
40AT10/15-2	15ST10-40	15	6F	47.90	45.90	51	31	30	40	8	0.152
40AT10/16-2	16ST10-40	16	6F	51.05	49.05	54	35	30	40	8	0.176
40AT10/18-2	18ST10-40	18	6F	57.45	55.45	60	40	30	40	8	0.224
40AT10/19-2	19ST10-40	19	6F	60.60	58.60	66	44	30	40	8	0.247
40AT10/20-2	20ST10-40	20	6F	63.80	61.80	66	46	30	40	8	0.276
40AT10/22-2	22ST10-40	22	6F	70.15	68.15	75	52	30	40	8	0.337
40AT10/24-2	24ST10-40	24	6F	76.55	74.55	83	58	30	40	8	0.392
40AT10/25-2	25ST10-40	25	6F	79.70	77.70	83	60	30	40	8	0.422
40AT10/26-2	26ST10-40	26	6F	82.90	80.90	87	60	30	40	8	0.477
40AT10/27-2	27ST10-40	27	6F	86.10	84.10	91	60	30	40	8	0.536
40AT10/28-2	28ST10-40	28	6F	89.25	87.25	93	60	30	40	8	0.540
40AT10/30-2	30ST10-40	30	6F	95.65	93.65	97	60	30	40	8	0.640
40AT10/32-2	32ST10-40	32	6F	102.00	100.00	106	65	30	40	10	0.693
40AT10/36-2	36ST10-40	36	6F	114.75	112.75	120	70	30	40	10	0.873
40AT10/40-2	40ST10-40	40	6F	127.45	125.45	135	80	30	40	10	1.067
40AT10/44-0	44ST10-40	44	6	140.20	138.20	—	88	30	40	10	1.350
40AT10/48-0	48ST10-40	48	6	152.95	150.95	—	95	30	40	16	1.516
40AT10/60-0	60ST10-40	60	6	191.10	189.10	—	110	30	40	16	2.339

### AT 10 mm Pitch x 32 mm Belt Width

Part No.	Part Code	Teeth	Type	Dp	De	Df	Dm	F	L	d	Wt. kg
47AT10/18-2	18ST10-47	18	6F	57.45	55.45	60	40	37	47	10	0.253
47AT10/19-2	19ST10-47	19	6F	60.60	58.60	66	44	37	47	10	0.286
47AT10/20-2	20ST10-47	20	6F	63.80	61.80	66	46	37	47	12	0.322
47AT10/22-2	22ST10-47	22	6F	70.15	68.15	75	52	37	47	12	0.393
47AT10/24-2	24ST10-47	24	6F	76.55	74.55	83	58	37	47	12	0.475
47AT10/25-2	25ST10-47	25	6F	79.70	77.70	83	60	37	47	12	0.527
47AT10/26-2	26ST10-47	26	6F	82.90	80.90	87	60	37	47	12	0.564
47AT10/27-2	27ST10-47	27	6F	86.10	84.10	91	60	37	47	12	0.602
47AT10/28-2	28ST10-47	28	6F	89.25	87.25	93	60	37	47	12	0.642
47AT10/30-2	30ST10-47	30	6F	95.65	93.65	97	60	37	47	12	0.740
47AT10/32-2	32ST10-47	32	6F	102.00	100.00	106	65	37	47	12	0.844
47AT10/36-2	36ST10-47	36	6F	114.75	112.75	120	70	37	47	16	1.063
47AT10/40-2	40ST10-47	40	6F	127.45	125.45	135	80	37	47	16	1.317
47AT10/44-0	44ST10-47	44	6	140.20	138.20	—	88	37	47	16	1.611
47AT10/48-0	48ST10-47	48	6	152.95	150.95	—	95	37	47	16	1.931
47AT10/60-0	60ST10-47	60	6	191.10	189.10	—	110	37	47	16	3.004

Note: Finished Bore & Keyway available on request.