

Metric Timing Pulleys



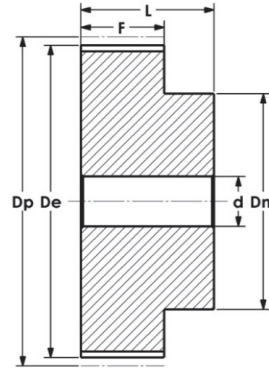
AT Series - 5 and 10mm Pitch Aluminum, Pilot Bore

Part No: 36AT5/20-2

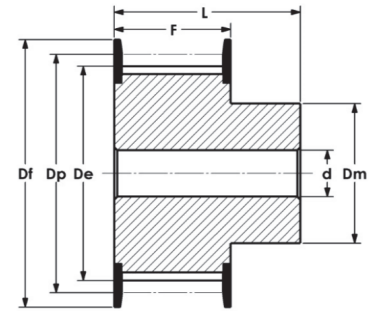
- 36 = Length thru Bore
- AT5 = Tooth Profile and Pitch
- 20 = Number of Teeth
- 2 = Number of Flanges



Models Available



Type 6



Type 6F

AT 5 mm Pitch x 25 mm Belt Width

Dimensions in mm

Part No.	Part Code	Teeth	Type	Dp	De	Df	Dm	F	L	d	Wt. kg
36AT5/12-2	12ST5-36	12	6F	19.25	17.85	23.0	11	30	36	—	0.031
36AT5/14-2	14ST5-36	14	6F	22.45	21.05	25.0	14	30	36	—	0.037
36AT5/15-2	15ST5-36	15	6F	24.05	22.65	28.0	16	30	36	—	0.041
36AT5/16-2	16ST5-36	16	6F	25.60	24.20	32.0	18	30	36	—	0.050
36AT5/18-2	18ST5-36	18	6F	28.80	27.40	32.0	20	30	36	—	0.061
36AT5/19-2	19ST5-36	19	6F	30.40	29.00	36.0	22	30	36	—	0.070
36AT5/20-2	20ST5-36	20	6F	32.00	30.60	36.0	23	30	36	—	0.076
36AT5/22-2	22ST5-36	22	6F	35.25	33.85	38.0	24	30	36	—	0.080
36AT5/24-2	24ST5-36	24	6F	38.40	37.00	42.0	26	30	36	—	0.109
36AT5/25-2	25ST5-36	25	6F	40.00	38.60	44.0	26	30	36	—	0.118
36AT5/26-2	26ST5-36	26	6F	41.60	40.20	44.0	26	30	36	—	0.120
36AT5/27-2	27ST5-36	27	6F	43.20	41.80	48.0	30	30	36	8	0.128
36AT5/28-2	28ST5-36	28	6F	44.75	43.35	48.0	32	30	36	8	0.135
36AT5/30-2	30ST5-36	30	6F	47.95	46.55	51.0	34	30	36	8	0.150
36AT5/32-2	32ST5-36	32	6F	51.10	49.70	54.0	38	30	36	8	0.178
36AT5/36-2	36ST5-36	36	6F	57.45	56.05	64.0	38	30	36	8	0.230
36AT5/40-2	40ST5-36	40	6F	63.85	62.45	66.5	40	30	36	8	0.278
36AT5/42-2	42ST5-36	42	6F	67.00	65.60	70.0	40	30	36	8	0.284
36AT5/44-0	44ST5-36	44	6	70.20	68.80	—	45	30	36	8	0.315
36AT5/48-0	48ST5-36	48	6	76.55	75.15	—	50	30	36	8	0.400
36AT5/60-0	60ST5-36	60	6	95.65	94.25	—	65	30	36	8	0.614

AT 10 mm Pitch x 16 mm Belt Width

Part No.	Part Code	Teeth	Type	Dp	De	Df	Dm	F	L	d	Wt. kg
31AT10/15-2	15ST10-31	15	6F	47.90	45.90	51	32	21	31	8	0.118
31AT10/16-2	16ST10-31	16	6F	51.05	49.05	54	35	21	31	8	0.134
31AT10/18-2	18ST10-31	18	6F	57.45	55.45	60	40	21	31	8	0.167
31AT10/19-2	19ST10-31	19	6F	60.60	58.60	66.5	44	21	31	8	0.184
31AT10/20-2	20ST10-31	20	6F	63.80	61.80	66.5	46	21	31	8	0.208
31AT10/22-2	22ST10-31	22	6F	70.15	68.15	75	52	21	31	8	0.253
31AT10/24-2	24ST10-31	24	6F	76.55	74.55	83	58	21	31	8	0.288
31AT10/25-2	25ST10-31	25	6F	79.70	77.70	83	60	21	31	8	0.310
31AT10/26-2	26ST10-31	26	6F	82.90	80.90	87	60	21	31	8	0.357
31AT10/27-2	27ST10-31	27	6F	86.10	84.10	91	60	21	31	8	0.364
31AT10/28-2	28ST10-31	28	6F	89.25	87.25	93	60	21	31	8	0.401
31AT10/30-2	30ST10-31	30	6F	95.65	93.65	97	60	21	31	8	0.441
31AT10/32-2	32ST10-31	32	6F	102.00	100.00	106	65	21	31	10	0.493
31AT10/36-2	36ST10-31	36	6F	114.75	112.75	119	70	30	36	10	0.623
31AT10/40-2	40ST10-31	40	6F	127.45	125.45	131	80	21	31	10	0.787
31AT10/44-0	44ST10-31	44	6	140.20	138.20	—	88	21	31	10	0.993
31AT10/48-0	48ST10-31	48	6	152.95	150.95	—	95	21	31	16	1.090
31AT10/60-0	60ST10-31	60	6	191.10	189.10	—	110	21	31	16	1.701

Note: Finished Bore & Keyway available on request.