

# Metric Sprockets

## ISO 28B Hub Type B

DIN 8187/ISO R 606

Chain Size: 28B-1 (1-3/4" x 1-1/4")

Pitch: 44.45 mm (1-3/4")

Roller Width: 30.99 mm

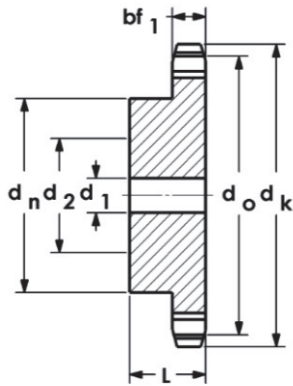
Roller Dia.: 27.94 mm

Spkt. Width: 28.0 mm (bf<sub>1</sub>)

Material: Steel C45



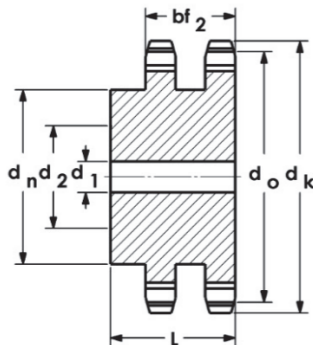
Models Available



Part No.	Teeth	d <sub>o</sub> mm	d <sub>k</sub> mm	d <sub>n</sub> mm	d <sub>1</sub> mm	d <sub>2</sub> mm	L mm	Wt. kg
28B-8B	8	116.2	132	74	25	45	70	1.9
28B-9B	9	129.9	148	88	25	55	70	2.1
28B-10B	10	143.9	162	100	25	60	70	5.5
28B-11B	11	157.8	176	112	25	70	70	7.0
28B-12B	12	171.7	186	125	25	90	70	8.0
28B-13B	13	185.8	204	130*	25	90	70	9.1
28B-14B	14	199.8	218	130*	25	90	70	10.35
28B-15B	15	213.8	232	145*	25	90	70	12.0
28B-16B	16	227.8	246	160*	30	100	75	7.5
28B-17B	17	241.9	260	160*	30	100	75	11.5
28B-18B	18	255.9	274	160*	30	100	75	17.5
28B-19B	19	270.0	289	160*	30	100	75	14.01
28B-20B	20	284.1	303	160*	30	100	75	20.0

Chain Size: 28B-2

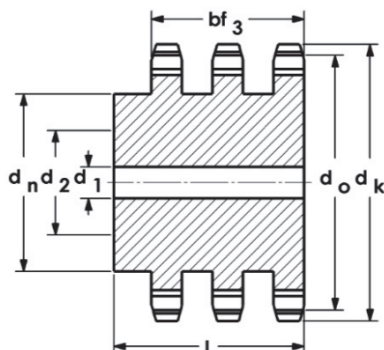
Spkt. Width: 87.5 mm (bf<sub>2</sub>)



Part No.	Teeth	d <sub>o</sub> mm	d <sub>k</sub> mm	d <sub>n</sub> mm	d <sub>1</sub> mm	d <sub>2</sub> mm	L mm	Wt. kg
28B-2-8B	8	116.2	132	74	25	45	120	5.0
28B-2-9B	9	129.9	148	88	25	55	120	7.0
28B-2-10B	10	143.9	162	100	25	60	120	9.5
28B-2-11B	11	157.8	176	112	25	70	120	12.5
28B-2-12B	12	171.7	186	125	25	90	120	14.65
28B-2-13B	13	185.8	204	130*	25	90	120	16.9
28B-2-14B	14	199.8	218	130*	25	90	120	16.95
28B-2-15B	15	213.8	232	145*	25	90	120	17.0
28B-2-16B	16	227.8	246	160*	30	100	120	17.15
28B-2-17B	17	241.9	260	160*	30	100	120	17.35
28B-2-18B	18	255.9	274	160*	30	100	120	17.50
28B-2-19B	19	270.0	289	180*	30	100	120	19.25
28B-2-20B	20	284.1	303	180*	30	100	120	42.6

Chain Size: 28B-3

Spkt. Width: 147.0 mm (bf<sub>3</sub>)



Part No.	Teeth	d <sub>o</sub> mm	d <sub>k</sub> mm	d <sub>n</sub> mm	d <sub>1</sub> mm	d <sub>2</sub> mm	L mm	Wt. kg
28B-3-8B	8	116.2	132	74	25	45	180	9.0
28B-3-9B	9	129.9	148	88	25	55	180	11.0
28B-3-10B	10	143.9	162	100	25	60	180	14.0
28B-3-11B	11	157.8	176	112	25	70	180	17.0
28B-3-12B	12	171.7	186	125	25	90	180	20.0
28B-3-13B	13	185.8	204	130*	25	90	180	25.3
28B-3-14B	14	199.8	218	130*	25	90	180	30.0
28B-3-15B	15	213.8	232	145*	25	90	180	35.0
28B-3-16B	16	227.8	246	160*	30	100	180	40.5
28B-3-17B	17	241.9	260	160*	30	100	180	46.0
28B-3-18B	18	255.9	274	160*	30	100	180	53.0
28B-3-19B	19	270.0	289	160*	30	100	180	59.0
28B-3-20B	20	284.1	303	160*	30	100	180	62.0

Note: \* Fabricated with welded hub.