

Metric Sprockets

Standard, Hardened Teeth and Stainless Steel



ISO 16B Hub Type B

Din 8187/ISO R 606

Chain Size: 16B-1 (1" x 17.02 mm)
 Pitch: 25.4 mm
 Roller Width: 17.02 mm
 Roller Dia.: 15.88 mm
 Spkt. Width: 16.2 mm (bf₁)
 Material: Standard Steel C45
 Material: Stainless Steel 304L



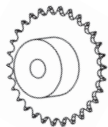
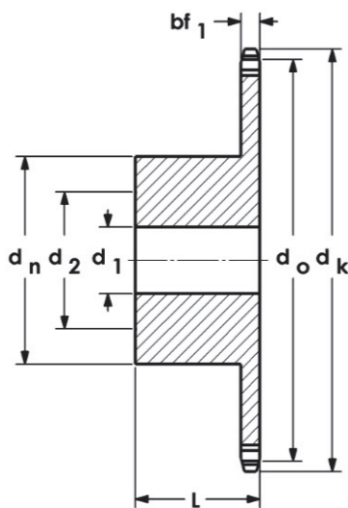
Standard



Hardened Teeth



Stainless Steel



Models Available

Part No. Standard	Part No. Hardened Teeth	Part No. Stainless Steel	Teeth	d _o mm	d _k mm	d _n mm	d ₁ mm	d ₂ mm	L mm	Wt. kg
16B-8B	—	—	8	66.37	77.0	42	16	26	35	0.50
16B-9B	—	—	9	74.27	85.0	50	16	31	35	0.70
16B-10B	—	—	10	82.19	93.0	55	16	35	35	0.85
16B-11B	—	—	11	90.14	99.5	61	16	40	40	1.16
16B-12B	16B-12BH	16B-12BSS	12	98.14	109.0	69	16	43	40	1.50
16B-13B	16B-13BH	16B-13BSS	13	106.12	117.0	78	16	49	40	1.81
16B-14B	16B-14BH	16B-14BSS	14	114.15	125.0	84	16	52	40	2.10
16B-15B	16B-15BH	16B-15BSS	15	122.17	133.0	92	16	58	40	2.53
16B-16B	16B-16BH	16B-16BSS	16	130.20	141.0	100	20	63	45	3.20
16B-17B	16B-17BH	16B-17BSS	17	138.22	149.0	100	20	63	45	3.42
16B-18B	16B-18BH	16B-18BSS	18	146.28	157.0	100	20	63	45	3.62
16B-19B	16B-19BH	16B-19BSS	19	154.33	165.2	100	20	63	45	3.80
16B-20B	16B-20BH	16B-20BSS	20	162.38	173.2	100	20	63	45	4.15
16B-21B	16B-21BH	16B-21BSS	21	170.43	181.2	110	20	70	50	5.10
16B-22B	16B-22BH	16B-22BSS	22	178.48	189.3	110	20	70	50	5.40
16B-23B	16B-23BH	16B-23BSS	23	186.53	197.5	110	20	70	50	5.65
16B-24B	16B-24BH	16B-24BSS	24	194.59	205.5	110	20	70	50	5.90
16B-25B	16B-25BH	16B-25BSS	25	202.66	213.5	110	20	70	50	6.30
16B-26B	—	—	26	210.72	221.6	120	20	76	50	7.00
16B-27B	—	—	27	218.79	229.6	120	20	76	50	7.35
16B-28B	—	—	28	226.85	237.7	120	20	76	50	7.70
16B-29B	—	—	29	234.92	245.8	120	20	76	50	8.10
16B-30B	16B-30BH	16B-30BSS	30	243.00	254.0	120	25	76	50	8.40
16B-31B	—	—	31	251.08	262.0	120	25	76	50	9.50
16B-32B	—	—	32	259.13	270.0	120	25	76	50	9.09
16B-33B	—	—	33	267.21	278.5	120	25	76	50	9.50
16B-34B	—	—	34	275.28	287.0	120	25	76	50	11.40
16B-35B	—	—	35	283.36	296.2	120	25	76	50	11.80
16B-36B	—	—	36	291.44	304.6	120	25	76	50	12.10
16B-37B	—	—	37	299.51	312.6	120	25	76	50	12.40
16B-38B	—	—	38	307.59	320.7	120	25	76	50	13.15
16B-39B	—	—	39	315.67	328.8	120	25	76	50	13.80
16B-40B	—	—	40	323.73	336.9	120	25	76	50	14.05

Note: All sizes can be Induction Hardened. Finish Bore and Keyway available on request. Other Stainless sizes available on request.