

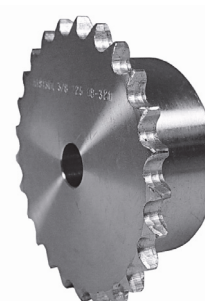
Metric Sprockets

Standard, Hardened Teeth and Stainless Steel

ISO 10B Hub Type B

DIN 8187/ISO R 606

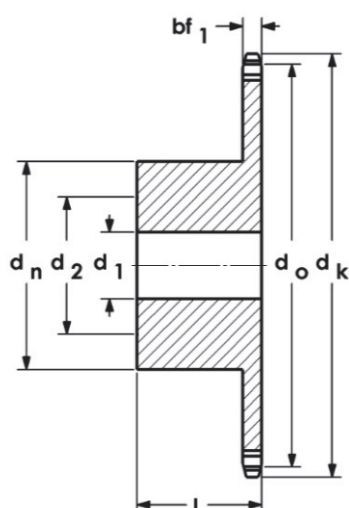
Chain Size: 10B-1 (5/8" x 3/8")
 Pitch: 15.875 mm
 Roller Width: 9.65 mm
 Roller Dia.: 10.16 mm
 Spkt. Width: 9.1 mm (bf₁)
 Material: Standard Steel C45
 Material: Stainless Steel 304L



Standard

Hardened Teeth

Stainless Steel



Models Available

Part No. Standard	Part No. Hardened Teeth	Part No. Stainless Steel	Teeth	d _o mm	d _k mm	d _n mm	d ₁ mm	d ₂ mm	L mm	Wt. kg
10B-8B	—	—	8	41.48	47.0	25	10	16	25	0.23
10B-9B	—	—	9	46.42	52.6	30	10	18	25	0.25
10B-10B	—	—	10	51.37	57.5	35	10	20	25	0.27
10B-11B	—	—	11	56.34	63.0	37	12	23	30	0.30
10B-12B	10B-12BH	10B-12BSS	12	61.34	68.0	42	12	26	30	0.35
10B-13B	10B-13BH	10B-13BSS	13	66.32	73.0	47	12	29	30	0.47
10B-14B	10B-14BH	10B-14BSS	14	71.34	78.0	52	12	32	30	0.55
10B-15B	10B-15BH	10B-15BSS	15	76.36	83.0	57	12	35	30	0.65
10B-16B	10B-16BH	10B-16BSS	16	81.37	88.0	60	12	38	30	0.77
10B-17B	10B-17BH	10B-17BSS	17	86.39	93.0	60	12	38	30	0.80
10B-18B	10B-18BH	10B-18BSS	18	91.42	98.3	70	14	44	30	1.03
10B-19B	10B-19BH	10B-19BSS	19	96.45	103.3	70	14	44	30	1.17
10B-20B	10B-20BH	10B-20BSS	20	101.49	108.4	75	14	47	30	1.22
10B-21B	10B-21BH	10B-21BSS	21	106.52	113.4	75	16	47	30	1.30
10B-22B	10B-22BH	10B-22BSS	22	111.55	118.0	80	16	50	30	1.41
10B-23B	10B-23BH	10B-23BSS	23	116.58	123.4	80	16	50	30	1.47
10B-24B	10B-24BH	10B-24BSS	24	121.62	128.3	80	16	50	30	1.53
10B-25B	10B-25BH	10B-25BSS	25	126.66	134.0	80	16	50	30	1.60
10B-26B	—	—	26	131.70	139.0	85	20	53	35	1.97
10B-27B	—	—	27	136.75	144.0	85	20	53	35	2.05
10B-28B	—	—	28	141.78	148.7	90	20	56	35	2.30
10B-29B	—	—	29	146.83	153.8	90	20	56	35	2.35
10B-30B	10B-30BH	10B-30BSS	30	151.87	158.8	90	20	56	35	2.43
10B-31B	—	—	31	156.92	163.9	95	20	60	35	2.63
10B-32B	—	—	32	161.95	168.9	95	20	60	35	2.75
10B-33B	—	—	33	167.00	174.5	95	20	60	35	2.85
10B-34B	—	—	34	172.05	179.0	95	20	60	35	3.00
10B-35B	—	—	35	177.10	184.1	95	20	60	35	3.05
10B-36B	—	—	36	182.15	189.1	100	20	63	35	3.15
10B-37B	—	—	37	187.20	194.2	100	20	63	35	3.40
10B-38B	—	—	38	192.24	199.2	100	20	63	35	3.48
10B-39B	—	—	39	197.29	204.2	100	20	63	35	3.60
10B-40B	—	—	40	202.34	209.3	100	20	63	35	3.71

Note: All sizes can be Induction Hardened. Finish Bore and Key-way available on request. Other Stainless sizes available on request.