

Metric Sprockets



ISO 081B Hub Type B DIN 8187/ISO R 606

Chain Size: **081B-1 (1/2" x 1/8")**

Pitch: 12.7 mm

Roller Width: 3.3 mm

Roller Dia.: 7.75 mm

Spkt. Width: 3 mm (bf₁)

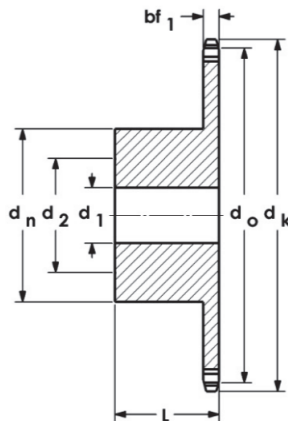
Material: Steel C45



Models Available



Part No.	Teeth	d _o mm	d _k mm	d _n mm	d ₁ mm	d ₂ mm	L mm	Wt kg
081B-8B	8	33.18	39.5	21	8	16	14	0.04
081B-9B	9	37.13	43.4	25	8	18	14	0.06
081B-10B	10	41.10	47.4	28	8	21	14	0.06
081B-11B	11	45.07	51.4	31	8	23	16	0.09
081B-12B	12	49.07	55.4	35	8	26	16	0.13
081B-13B	13	53.06	59.4	39	8	28	16	0.15
081B-14B	14	57.07	63.4	43	8	31	16	0.19
081B-15B	15	61.09	67.4	47	8	31	16	0.22
081B-16B	16	65.01	71.4	50	10	35	18	0.25
081B-17B	17	69.11	75.4	50	10	38	18	0.27
081B-18B	18	73.14	79.4	50	10	40	18	0.30
081B-19B	19	77.16	83.5	50	10	42	18	0.32
081B-20B	20	81.19	87.5	50	10	44	18	0.32
081B-21B	21	85.22	91.5	60	12	44	20	0.50
081B-22B	22	89.24	95.5	60	12	44	20	0.50
081B-23B	23	93.27	99.6	60	12	44	20	0.50
081B-24B	24	97.29	103.6	60	12	44	20	0.51
081B-25B	25	101.33	107.6	60	12	44	20	0.56
081B-26B	26	105.36	111.7	70	16	44	20	0.61
081B-27B	27	109.40	115.7	70	16	44	20	0.67
081B-28B	28	113.42	119.7	70	16	44	20	0.70
081B-29B	29	117.46	123.8	70	16	50	20	0.71
081B-30B	30	121.50	127.8	70	16	50	20	0.75
081B-31B	31	125.54	131.8	70	16	56	20	0.76
081B-32B	32	129.56	135.9	70	16	56	20	0.77
081B-33B	33	133.60	139.9	70	16	56	20	0.77
081B-34B	34	137.64	143.9	70	16	56	20	0.81
081B-35B	35	141.68	148.0	70	16	56	20	0.90
081B-36B	36	145.72	152.0	70	16	56	20	0.98
081B-37B	37	149.76	156.1	70	16	56	25	0.98
081B-38B	38	153.80	160.1	70	16	56	25	0.99
081B-39B	39	157.83	164.1	70	16	56	25	1.05
081B-40B	40	161.87	168.2	70	16	56	25	1.10



ISO 083B Hub Type B DIN 8187/ISO R 606

Chain Size: **083B-1(1/2" x 3/16")**

Pitch: 12.7 mm

Roller Width: 4.88 mm

Roller Dia.: 7.75 mm

Spkt. Width: 4.5 mm (bf₁)

Material: Steel C45

Part No.	Teeth	d _o mm	d _k mm	d _n mm	d ₁ mm	d ₂ mm	L mm	Wt kg
083B-8B	8	33.18	39.5	21	8	16	14	0.04
083B-9B	9	37.13	43.4	25	8	18	14	0.05
083B-10B	10	41.10	47.4	28	8	21	14	0.07
083B-11B	11	45.07	51.4	31	8	23	16	0.10
083B-12B	12	49.07	55.4	25	8	26	16	0.18
083B-13B	13	53.06	59.4	39	8	28	16	0.20
083B-14B	14	57.07	63.4	43	8	31	16	0.24
083B-15B	15	61.09	67.4	47	8	31	16	0.24
083B-16B	16	65.01	71.4	50	10	35	18	0.30
083B-17B	17	69.11	75.4	50	10	38	18	0.32
083B-18B	18	73.14	79.4	50	10	40	18	0.33
083B-19B	19	77.16	83.5	50	10	42	18	0.34
083B-20B	20	81.19	87.5	50	10	44	18	0.42
083B-21B	21	85.22	91.5	60	12	44	20	0.51
083B-22B	22	89.24	95.5	60	12	44	20	0.53
083B-23B	23	93.27	99.6	60	12	44	20	0.56
083B-24B	24	97.29	103.6	60	12	44	20	0.56
083B-25B	25	101.33	107.6	60	12	44	20	0.64
083B-26B	26	105.36	111.7	70	16	44	20	0.72
083B-27B	27	109.40	115.7	70	16	44	20	0.78
083B-28B	28	113.42	119.7	70	16	44	20	0.77
083B-29B	29	117.46	123.8	70	16	50	20	0.81
083B-30B	30	121.50	127.8	70	16	50	20	0.83
083B-31B	31	125.54	131.8	70	16	56	20	0.85
083B-32B	32	129.56	135.9	70	16	56	20	0.87
083B-33B	33	133.60	139.9	70	16	56	20	0.90
083B-34B	34	137.64	143.9	70	16	56	20	0.92
083B-35B	35	141.68	148.0	70	16	56	20	0.95
083B-36B	36	145.72	152.0	70	16	56	20	1.16
083B-37B	37	149.76	156.1	70	16	56	25	1.16
083B-38B	38	153.80	160.1	70	16	56	25	1.19
083B-39B	39	157.83	164.1	70	16	56	25	1.22
083B-40B	40	161.87	168.2	70	16	56	25	1.30

Note: Hardened Teeth and Finished Bore available on request.