

Metric Sprockets

Standard, Hardened Teeth and Stainless Steel



ISO 06B Hub Type B

DIN 8187/ISO R 606

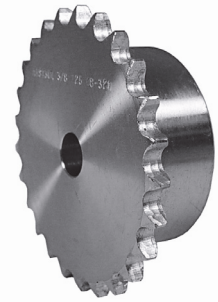
Chain Size: **06B-1 (3/8" x 7/32")**
 Pitch: 9.525 mm
 Roller Width: 5.72 mm
 Roller Dia.: 6.35 mm
 Spkt. Width: 5.3 mm (bf₁)
 Material: Standard Steel C45
 Material: Stainless Steel 304L



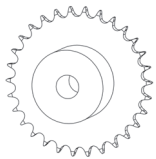
Standard



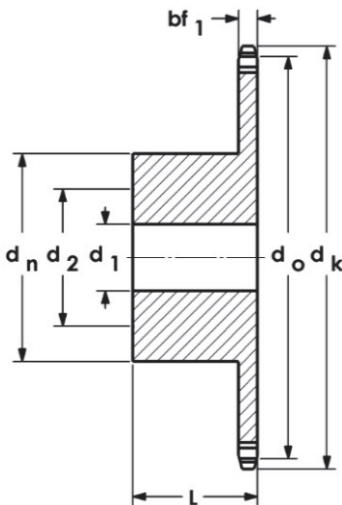
Hardened Teeth



Stainless Steel



Models Available



Part No. Standard	Part No. Hardened Teeth	Part No. Stainless Steel	Teeth	d _o mm	d _k mm	d _n mm	d ₁ mm	d ₂ mm	L mm	Wt. kg
06B-8B	—	—	8	24.89	28.0	15	8	10	22	0.03
06B-9B	—	—	9	27.85	31.0	18	8	11	22	0.04
06B-10B	—	—	10	30.82	34.0	20	8	12	22	0.05
06B-11B	—	—	11	33.80	37.0	22	8	14	25	0.07
06B-12B	—	—	12	36.80	40.0	25	8	16	25	0.10
06B-13B	06B-13BH	06B-13BSS	13	39.80	43.0	28	10	18	25	0.13
06B-14B	06B-14BH	06B-14BSS	14	42.80	46.3	31	10	20	25	0.15
06B-15B	06B-15BH	06B-15BSS	15	45.81	49.3	34	10	22	25	0.18
06B-16B	06B-16BH	06B-16BSS	16	48.82	52.3	37	10	22	28	0.24
06B-17B	06B-17BH	06B-17BSS	17	51.83	55.3	40	10	25	28	0.28
06B-18B	06B-18BH	06B-18BSS	18	54.85	58.3	43	10	27	28	0.30
06B-19B	06B-19BH	06B-19BSS	19	57.87	61.3	45	10	28	28	0.35
06B-20B	06B-20BH	06B-20BSS	20	60.89	64.3	46	10	29	28	0.40
06B-21B	06B-21BH	06B-21BSS	21	63.91	68.0	48	12	30	28	0.44
06B-22B	06B-22BH	06B-22BSS	22	66.93	71.0	50	12	30	28	0.47
06B-23B	06B-23BH	06B-23BSS	23	69.95	73.5	52	12	32	28	0.50
06B-24B	06B-24BH	06B-24BSS	24	72.97	77.0	54	12	34	28	0.60
06B-25B	06B-25BH	06B-25BSS	25	76.00	80.0	57	12	36	28	0.60
06B-26B	—	—	26	79.02	83.0	60	12	38	28	0.65
06B-27B	—	—	27	82.04	86.0	60	12	38	28	0.69
06B-28B	—	—	28	85.07	89.0	60	12	38	28	0.70
06B-29B	—	—	29	88.09	92.0	60	12	38	28	0.80
06B-30B	06B-30BH	06B-30BSS	30	91.12	94.7	60	12	38	30	0.90
06B-31B	—	—	31	94.15	98.3	65	14	42	30	0.98
06B-32B	—	—	32	97.17	101.3	65	14	42	30	1.05
06B-33B	—	—	33	100.20	104.3	65	14	42	30	1.10
06B-34B	—	—	34	103.23	107.3	65	14	42	30	1.12
06B-35B	—	—	35	106.26	110.4	65	14	42	30	1.12
06B-36B	—	—	36	109.29	113.4	70	16	45	30	1.13
06B-37B	—	—	37	112.32	116.4	70	16	45	30	1.14
06B-38B	—	—	38	115.34	119.5	70	16	45	30	1.15
06B-39B	—	—	39	118.37	122.5	70	16	45	30	1.16
06B-40B	—	—	40	121.40	125.5	70	16	45	30	1.18

Note: All sizes can be Induction Hardened. Finish Bore and Key-way available on request. Other Stainless sizes available on request