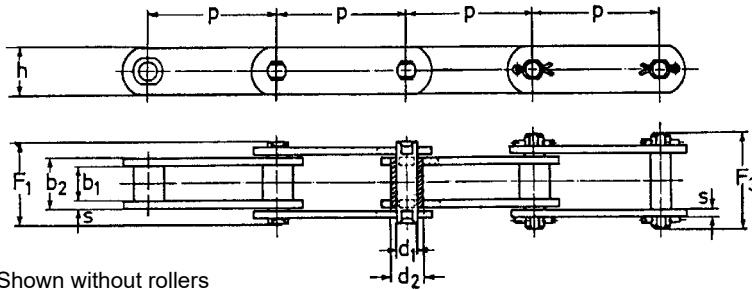


Metric Conveyor Chain



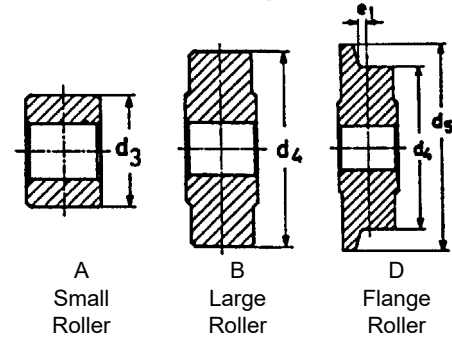
Solid Bearing Pin Chain DIN 8167/ISO 1977



Shown without rollers
Attachments shown on next page



Roller options



A
Small
Roller

B
Large
Roller

D
Flange
Roller

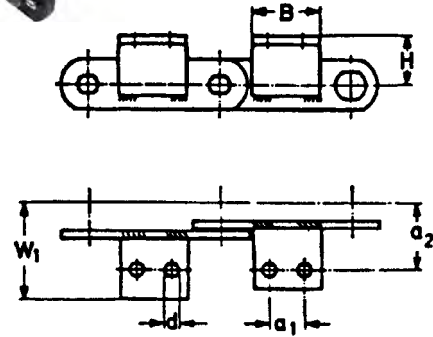
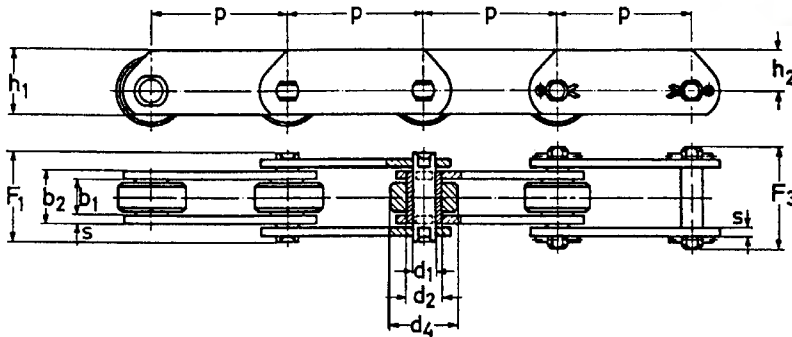
Metric Conveyor Chain typically includes attachments and one of the rollers shown at right. Sold in 5 meter lengths or custom lengths on request.

Dimensions in mm

Size	Pitches p	b ₁ min.	b ₂ max.	d ₁	d ₂	d ₃	d ₄	d ₄ / d ₅	e ₁	F ₁	F ₃	h	s	Bearing Area cm ²	Breaking Load N
						A	B	D							
M 20	40-50-63-80-100-125-160	16	22	6	9	12.5	25	25/30	4	31.2	36.2	18	2.5	1.32	20,000
M 28	50-63-80-100-125-160-200	18	25	7	10	15	30	30/36	4.5	35.2	40.2	20	3	1.75	28,000
M 40	63-80-100-125-160-200-250	20	28	8.5	12.5	18	36	36/42	4.5	40.2	47.2	25	3.5	2.38	40,000
M 56	63-80-100-125-160-200-250	24	33	10	15	21	42	42/50	6	47.2	56.2	30	4	3.30	56,000
M 80	80-100-125-160-200-250-315	28	39	12	18	25	50	50/60	7	55.2	64.2	35	5	4.68	80,000
M 112	80-100-125-160-200-250-315-400	32	45	15	21	30	60	60/70	7.5	64.2	75.2	40	6	6.75	112,000
M 160	100-125-160-200-250-315-400-500	37	52	18	25	36	70	70/85	8.5	73.3	88.3	50	7	9.36	160,000
M 224	125-160-200-250-315-400-500-630	43	60	21	30	42	85	85/100	10	86.3	99.3	60	8	12.60	224,000
M 315	160-200-250-315-400-500-630	48	70	25	36	50	100	100/120	10.5	100.3	120.3	70	10	17.50	315,000
M 450	200-250-315-400-500-630-800	56	82	30	42	60	120	120/140	11.5	117.3	141.3	80	12	24.60	450,000
M 630	250-315-400-500-630-800-1000	66	96	36	50	70	140	140/170	14.5	136.3	159.3	100	14	34.56	630,000
M 900	250-315-400-500-630-800-1000	78	112	44	60	85	170	170/210	17	157.3	179.3	120	16	49.28	900,000

Metric Conveyor Chain

Deep Link Solid Bearing Pin Chain DIN 8167/ISO 1977



Shown with "B" rollers. (See previous page for roller dimensions.)

Attachments

Size	Pitch p	a ₁	a ₂	B max.	d. max.	h ₁	h ₂	H	W ₁	Angle Profile	Weight kg/m (as per roller type)				Attach. Wt. kg									
											no roller	A	B	D										
MT20	40	*	27	14	6.6	25	16	16	42	25x20x3	BSP	1.08	1.44	2.61	2.81	0.02								
	50	*		14							BSP	1.01	1.29	2.23	2.39	0.02								
	63	20		35								0.99	1.23	2.00	2.13	0.04								
	80	35		50								0.90	1.07	1.67	1.77	0.06								
	100	50		65								0.86	1.00	1.47	1.55	0.07								
	125	50		65								0.82	0.95	1.32	1.38	0.07								
	160	50		65								0.80	0.89	1.19	1.24	0.07								
MT28	50	*	32	20	9	30	20	20	50	20x30x3	BSP	1.54	1.82	3.32	3.52	0.02								
	63	*		20							BSP	1.42	1.64	2.84	3.00	0.02								
	80	25		45								1.32	1.50	2.44	2.57	0.05								
	100	40		60								1.24	1.38	2.13	2.23	0.07								
	125	65		85								1.18	1.30	1.90	1.98	0.10								
	160	65		85								1.13	1.22	1.69	1.75	0.10								
	200	65		85								1.10	1.17	1.54	1.59	0.10								
	MT40	63		*							35	20	9	35	22.5	25	56	30x30x3	BSP	2.24	2.57	4.47	4.70	0.03
80		20	40		1.98	2.25	3.75	3.95	0.06															
100		40	60		1.91	2.12	3.32	3.47	0.08															
125		65	85		1.81	1.98	2.93	3.06	0.15															
160		65	85		1.71	1.85	2.60	2.71	0.15															
200		65	85		1.64	1.75	2.35	2.42	0.15															
250		65	85		1.60	1.68	2.16	2.23	0.15															
MT56		63	*	44	22	11	45	30	30	70		40x40x4							BSP	3.32	3.83	6.93	7.26	0.05
		80	*		22														BSP	3.01	3.41	5.86	6.20	0.05
	100	25	50								2.79		3.11	5.07	5.34	0.12								
	125	50	75								2.60		2.87	4.43	4.65	0.18								
	160	85	110								2.44		2.64	3.87	4.04	0.27								
	200	85	110								2.34		2.50	3.49	3.63	0.27								
	250	85	110								2.25		2.37	3.16	3.27	0.27								
	MT80	80	*		48						22		11	50	32.5	35	80	40x40x4	BSP	4.65	5.29	9.35	9.95	0.05
100		*	22	BSP		4.27	4.79	8.03	8.50	0.05														
125		50	75			3.97	4.38	6.98	7.35	0.18														
160		85	110			3.70	4.03	6.05	6.35	0.27														
200		125	150			3.51	3.77	5.39	5.63	0.36														
250		125	150			3.37	3.57	4.87	5.06	0.36														
315		125	150			3.24	3.41	4.43	4.58	0.36														

Dimensions in mm. * = only one hole. BSP = Bent Side Plate (attachment and side plate stamped from one piece).

Metric Conveyor Chain



Deep Link Solid Bearing Pin Chain DIN 8167/ISO 1977

Metric Conveyor Chain typically includes attachments on some or all links as well. Please identify link spacing. Sold in 5 meter lengths or custom lengths as required.



Size	Pitch p	a ₁	a ₂	B max.	d max	h ₁	h ₂	H	W ₁	Angle Profile	Weight kg/m (as per roller type)				Attach. Wt. kg
											no roller	A	B	D	
MT 112	80	*	55	28	14	60	40	40	92	50x50x6	6.75	7.88	14.6	15.3	0.13
	100	*		28							6.15	7.06	12.4	13.0	0.13
	125	35		65							5.69	6.42	10.7	11.2	0.30
	160	65		95							5.26	5.83	9.15	9.54	0.44
	200	100		130							4.97	5.43	8.09	8.38	0.59
	250	100		130							4.74	5.10	7.22	7.47	0.59
	315	100		130							4.53	4.82	6.52	6.70	0.59
	400	100		130							4.38	4.61	5.94	6.08	0.59
MT 160	100	*	62	30	14	70	45	45	100	50x50x6	9.70	11.2	19.5	20.4	0.14
	125	*		30							8.85	10.1	16.7	17.5	0.14
	160	50		80							8.15	9.12	14.3	14.9	0.37
	200	85		115							7.56	8.33	12.5	13.0	0.53
	250	145		175							7.22	7.82	11.1	11.5	0.80
	315	145		175							6.88	7.38	9.95	10.3	0.80
	400	145		175							6.57	6.95	9.00	9.25	0.80
	500	145		175							6.36	6.68	8.35	8.52	0.80
MT 224	125	*	70	35	18	90	60	55	114	60x60x8	13.1	14.9	26.6	27.8	0.25
	160	*		35							11.9	13.3	22.4	23.4	0.25
	200	65		100							11.1	12.2	19.5	20.3	0.71
	250	125		160							10.3	11.2	17.1	17.7	1.13
	315	190		225							9.78	10.5	15.1	15.7	1.60
	400	190		225							9.30	9.86	13.5	13.9	1.60
	500	190		225							8.97	9.40	12.3	12.6	1.60
	630	190		225							8.67	9.02	11.3	11.6	1.60
MT 315	160	*	80	35	18	100	65	65	125	70x70x9	18.3	20.5	34.4	36.1	0.27
	200	50		85							16.7	18.6	29.6	31.0	0.66
	250	100		135							15.6	17.1	25.9	27.1	1.04
	315	155		190							14.6	15.8	22.9	23.7	1.46
	400	155		190							13.9	14.8	20.3	21.2	1.46
	500	155		190							13.3	14.1	18.5	19.1	1.46
	630	155		190							12.8	13.4	16.9	17.4	1.46
	800	155		190							12.2	12.8	15.3	15.8	1.46
MT 450	200	*	90	40	18	120	80	75	140	70x70x9	24.2	27.5	46.0	47.8	0.37
	250	85		125							22.4	25.0	39.8	41.4	1.17
	315	155		195							20.9	22.9	34.7	36.0	1.82
	400	240		280							19.7	21.3	30.6	31.5	2.62
	500	240		280							18.7	20.1	27.5	28.2	2.62
	630	240		280							18.0	19.0	24.9	25.5	2.62
	800	240		280							17.4	18.2	22.8	23.3	2.62
	1000	240		280							16.8	17.6	20.7	21.2	2.62
MT 630	250	*	115	50	24	140	90	90	190	100x100x12	34.8	39.6	62.8	65.7	0.89
	315	100		150							32.2	35.4	54.3	56.5	2.67
	400	190		240							30.3	32.7	47.8	49.5	4.27
	500	300		350							28.4	30.4	42.4	43.8	6.22
	630	300		350							27.1	28.7	38.3	39.3	6.22
	800	300		350							26.0	27.2	34.7	35.6	6.22
	1000	300		350							25.2	26.2	32.2	32.9	6.22
	1200	300		350							24.5	25.5	29.7	30.3	6.22
MT 900	250	*	140	60	30	180	120	110	240	120x120x15	51.2	58.0	100	106	1.59
	315	65		125							47.0	52.3	85.7	90.2	3.32
	400	155		215							43.5	47.7	74.0	77.4	5.70
	500	240		300							40.8	44.2	65.3	68.1	7.95
	630	240		300							38.8	41.4	58.1	60.4	7.95
	800	240		300							36.9	39.0	52.2	51.7	7.95
	1000	240		300							35.5	37.2	47.7	49.1	7.95
	1200	240		300							34.1	35.6	43.2	44.5	7.95

Dimensions in mm. * = only one hole.

Metric Conveyor Chain

Hollow Pin Type
DIN 8167/ISO 1977



Introduction

Mounted Ball Bearings

SRE / SR2 Spherical Bearings

SAF / Plummer Blocks

Brg. Accessories, Radial Ball, & EICH Bearings

Rod Ends & Spherical Plain Bearings

Roller Chain & Sprockets

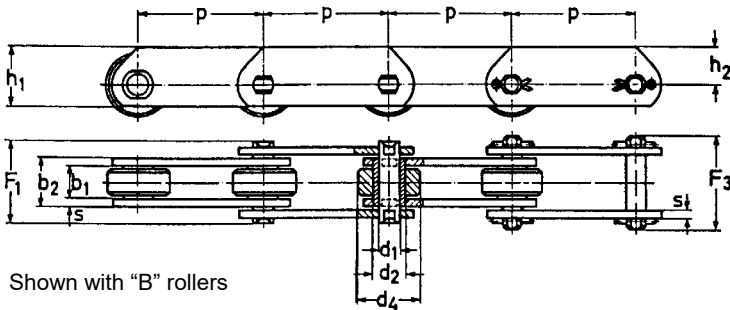
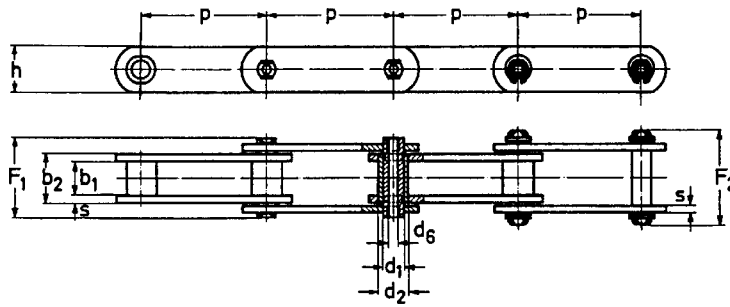
Bushings & Hubs

Gears & Racks

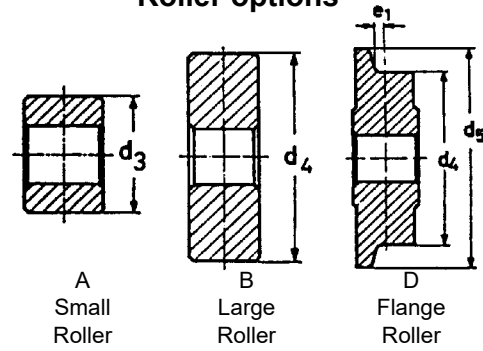
Belt Drives / Couplings

Linear Motion / WINKEL

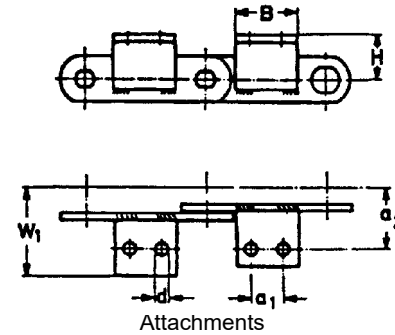
Roller options



Shown with "B" rollers



A Small Roller
B Large Roller
D Flange Roller



Attachments

Hollow Bearing Pin Chain

Part No.	Pitches p	b ₁ min.	b ₂ max.	d ₁	d ₂	d ₃ d ₄ d ₄ /d ₅			d ₆	e ₁	F ₁	F ₃	h	s	Bearing Area cm ²	Breaking Load N
						A	B	D								
MC 28	63-80-100-125-160	20	28	13	17.5	25	36	36/42	8.2	4.5	40.6	40.6	25	3.5	3.64	28,000
MC 56	80-100-125-160-200-250	24	33	15.5	21	30	50	50/60	10.2	6.0	46.6	46.6	35	4	5.11	56,000
MC 112	100-125-160-200-250-315	32	45	22	29	42	70	70/85	14.3	7.5	63.8	63.8	50	6	9.9	112,000
MC 224	160-200-250-315-400-500	43	60	31	41	60	100	100/120	20.3	10	82.9	82.9	70	8	18.6	224,000

Deep Link Hollow Bearing Pin Chain

Part No.	Pitch p	a ₁	a ₂	B max.	d max.	h ₁	h ₂	H	W ₁	Angle Profile	Weight kg/m (as per roller type)				Attach. Wt. kg
											no roller	A	B	D	
MCT 28	63	*	35	20	9	35	22.5	25	56	BSP	2.6	3.8	5.0	5.2	0.03
	80	20		2.4						3.3	4.3	4.4	0.06		
	100	40		2.2						2.9	3.7	3.8	0.09		
	125	65		2.0						2.6	3.2	3.3	0.12		
	160	65		1.9						2.3	2.8	2.9	0.12		
MCT 56	80	*	44	25	11	50	32.5	35	76	BSP	3.5	4.9	5.7	6.0	0.06
	100	*		3.3						4.4	5.0	5.2	0.06		
	125	50		3.1						4.0	4.5	4.6	0.18		
	160	85		2.9						3.6	4.0	4.1	0.27		
	200	125		2.7						3.3	3.6	3.7	0.36		
	250	125		2.6						3.1	3.3	3.4	0.36		

Dimensions in mm. * = only one hole.

BSP = Bent Side Plate (attachment and side plate stamped from one piece)

Metric Conveyor Chain



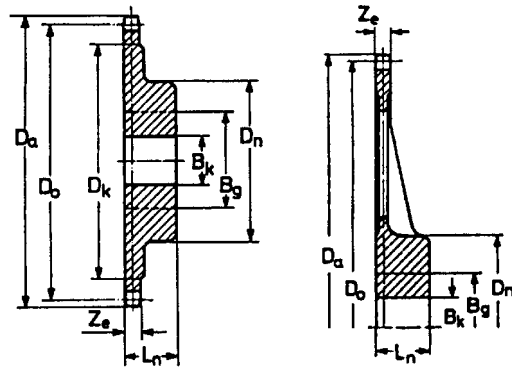
Deep Link Hollow Bearing Pin Chain DIN 8167/ISO 1977

Part No.	Pitch p	a ₁	a ₂	B max.	d max.	h ₁	h ₂	H	W ₁	Angle Profile	Weight kg/m (as per roller type)				Attach. Wt. kg
											no roller	A	B	D	
MCT 112	100	*	55	30	14	70	45	45	96	50x50x6	8.5	9.9	12.9	13.5	0.13
	125	*		30							7.6	8.9	11.3	11.7	0.13
	160	50		80							6.9	8.0	9.9	10.2	0.36
	200	85		115							6.5	7.3	8.8	9.1	0.51
	250	145		175							6.1	6.8	8.0	8.2	0.78
	315	145		175							5.3	5.8	6.8	6.9	0.78
MCT 224	160	*	70	35	18	100	65	65	110	60x60x8	13.6	16.4	27.0	28.7	0.25
	200	50		85							12.6	13.5	22.0	23.4	0.60
	250	100		135							11.9	12.5	19.4	20.5	0.96
	315	155		190							11.2	11.8	17.4	18.0	1.35
	400	155		190							-	-	-	-	-
	500	155		190							-	-	-	-	-

Dimensions in mm. * = only one hole.

Conveyor Chain Sprockets

These conveyor chain sprockets can be used with standard or deep link solid pin or hollow pin conveyor chains. Sprockets can be supplied with finished bore sizes as required.



Size	Pitch p	Teeth	Size	Pitch p	Teeth	Size	Pitch p	Teeth	Size	Pitch p	Teeth	Size	Pitch p	Teeth	Size	Pitch p	Teeth							
M20	40	10	M28	63	16	M40	125	8	M80	80	10	M112	125	10	M224	125	10							
		16			24			10			12			12			12	12						
		24			8			8			8			8			8	8						
		40			10			10			10			10			10	10						
	50	16		8	16		10	12		16	10		12	16		10	12	16	10	12	16	10	12	
		24		8	24		10	12		24	10		12	24		10	12	24	10	12	24	10	12	
		40		8	40		10	12		40	10		12	40		10	12	40	10	12	40	10	12	
		10		8	10		10	12		10	10		12	10		10	12	10	10	12	10	10	12	
	63	16		8	100		125	8		63	80		8	M80		125	8	M112	100	8	M224	100	8	
		24		10				24					10				24			10			24	10
		40		10				40					10				40			10			40	10
		8		10				8					10				8			10			8	10
80	16	8	63	100	16	80	100	16	M80	200	10	M112	125	8	M224	125	8							
	24	10			24			10			24			10			24	10						
	40	10			40			10			40			10			40	10						
	8	10			8			10			8			10			8	10						
100	10	8	80	125	10	100	125	10	M80	80	8	M112	160	8	M224	160	8							
	12	10			12			10			12			10			12	10						
	16	10			16			10			16			10			16	10						
	8	10			8			10			8			10			8	10						
M28	50	10	100	16	8	M80	80	8	M112	100	8	M224	125	8	M224	125	8							
		16			10			16			10			16			10	16	10					
		24			10			24			10			24			10	24	10					
		40			10			40			10			40			10	40	10					
63	10	16	10	16	10	16	10	16	10	16	10	16	10	16	10	16	10							