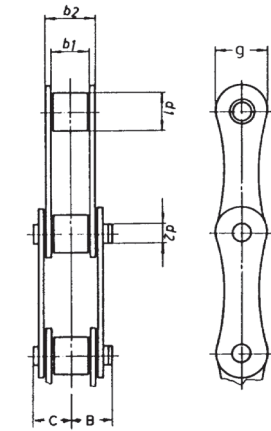


Double Pitch Roller Chain

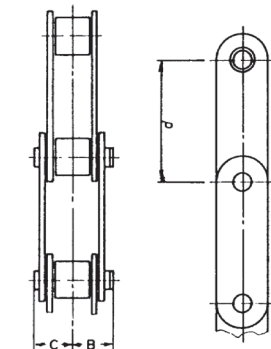
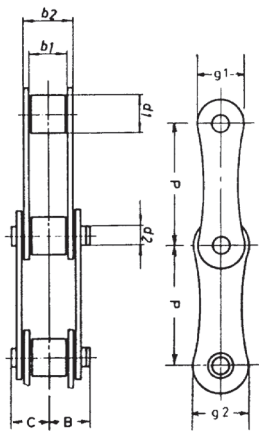


E-Series

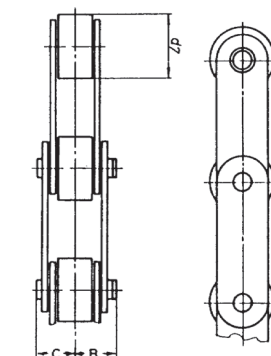
Double Pitch Roller Chains are available in Metric and ANSI versions. Curved and straight side plates are also available. These chains, like the standard roller chains, are manufactured to DIN and ANSI standards. Chains with attachments available on request.



Type A with curved side plates



Type C with straight side plates



Type C with large rollers LR

Metric Chains: DIN 8181 - Type A - with Standard Rollers

Part No.	Pitch	Inner Width	Roller Dia.	Pin Dia.	Plate Depth	Overall Width		Inner Link Width	Breaking Load	Approx. Wt.
	p mm	b ₁ min mm	d ₁ max. mm	d ₂ max. mm	g mm	B mm	C mm	b ₂ mm	N	kg/m
E208B	25.40	7.75	8.51	4.45	11.81	12.4	8.5	11.3	18000	0.5
E210B	31.75	9.65	10.16	5.08	14.73	13.9	9.8	13.3	22400	0.6
E212B	38.10	11.68	12.07	5.72	16.13	15.95	11.35	15.6	29000	0.8
E216B	50.80	17.02	15.88	8.28	21.08	23.45	18.05	25.4	60000	1.75
E220B	63.50	19.56	19.05	10.19	26.42	27.7	21.6	29.0	95000	2.63
E224B	76.20	25.40	25.40	14.63	33.40	33.3	26.7	37.9	160000	4.5

ANSI Chains: Type A - with Standard Rollers

Part No.	Pitch	Inner Width	Roller Dia.	Pin Dia.	Plate Depth		Overall Width		Inner Link Width	Breaking Load	Approx. Wt.
	p in	b ₁ min in	d ₁ max. in	d ₂ max. in	g ₁ in	g ₂ in	B in	C in	b ₂ in	lb	lb/ft
EA2040	1	.312	.312	.156	.409	.468	.380	.325	.432	3700	0.31
EA2050	1-1/4	.375	.400	.200	.524	.571	.469	.406	.535	6100	0.52
EA2060	1-1/2	.500	.469	.234	.606	.679	.600	.506	.688	8500	0.80

ANSI Chains: Type C - with Standard or Large Rollers

Part No.	Pitch	Inner Width	Roller Dia.	Pin Dia.	Plate Depth	Overall Width		Inner Link Width	Breaking Load	Approx. Wt.
	p in	b ₁ min in	d ₁ max. in	d ₂ max. in	g in	B in	C in	b ₂ in	lb	lb/ft
EC2040	1	.312	.312	.156	.468	.380	.325	.432	3700	0.34
EC2042	1	.312	.625	.156	.468	.380	.325	.432	3700	0.58
EC2050	1-1/4	.375	.400	.200	.571	.469	.406	.535	6100	0.58
EC2052	1-1/4	.375	.750	.200	.571	.469	.406	.535	6100	0.90
EC2060	1-1/2	.500	.469	.234	.679	.600	.506	.750	8500	1.00

ANSI Chains: Heavy Type H - with Standard or Large Rollers

Part No.	Pitch	Inner Width	Roller Dia.	Pin Dia.	Plate Depth	Overall Width		Inner Link Width	Breaking Load	Approx. Wt.
	p in	b ₁ min in	d ₁ max. in	d ₂ max. in	g in	B in	C in	b ₂ in	lb	lb/ft
EC2060H	1-1/2	.500	.469	.234	.677	.652	.573	.750	9000	1.01
EC2062H	1-1/2	.500	.875	.234	.677	.652	.573	.750	9000	1.47
EC2080H	2	.625	.625	.312	.906	.823	.720	.937	15400	1.62
EC2082H	2	.625	1.125	.312	.906	.823	.720	.937	15400	2.37
EC2100H	2-1/2	.750	.750	.375	1.15	.980	.830	1.125	24000	2.30
EC2102H	2-1/2	.750	1.562	.375	1.15	.980	.830	1.125	24000	3.75
EC2120H	3	1.000	.875	.437	1.37	1.210	1.030	1.438	34000	3.70
EC2122H	3	1.000	1.750	.437	1.37	1.210	1.030	1.438	34000	5.71