

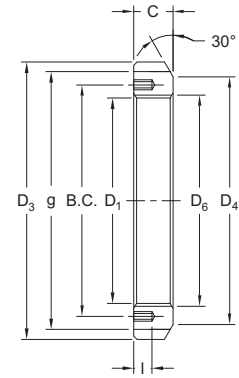
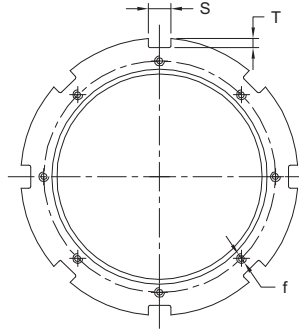
Metric Lock Nuts



HM3100 Series HM3000 Series



Models Available



HM3100 Series

Dimensions in mm

Part No.	D1 Thread	D3	D4	g	S	T	D6	C	I	f	B.C.	Lock Clip Part No.	Wt. kg
HM3144	TR220 x 4	280	250	260	20	10	222.0	32	15	M8 x 1.25	238	MS3144 / MS3148	5.20
HM3148	TR240 x 4	300	270	280	20	10	242.0	34	15	M8 x 1.25	258	MS3144 / MS3148	5.95
HM3152	TR260 x 4	330	300	306	24	12	262.0	36	18	M10 x 1.50	281	MS3152 / MS3156	8.05
HM3156	TR280 x 4	350	320	326	24	12	282.0	38	18	M10 x 1.50	301	MS3152 / MS3156	9.05
HM3160	TR300 x 4	380	340	356	24	12	302.0	40	18	M10 x 1.50	326	MS3160	11.80
HM3164	TR320 x 5	400	360	376	24	12	322.5	42	18	M10 x 1.50	345	MS3164	13.10
HM3168	TR340 x 5	440	400	410	28	15	342.5	55	21	M12 x 1.75	372	MS3168 / MS3172	23.10
HM3172	TR360 x 5	460	420	430	28	15	362.5	58	21	M12 x 1.75	392	MS3168 / MS3172	25.10
HM3176	TR380 x 5	490	450	454	32	18	382.5	60	21	M12 x 1.75	414	MS3176	30.90
HM3180	TR400 x 5	520	470	484	32	18	402.5	62	27	M16 x 2.00	439	MS3180 / MS3184	36.90
HM3184	TR420 x 5	540	490	504	32	18	422.5	70	27	M16 x 2.00	459	MS3180 / MS3184	43.50
HM3188	TR440 x 5	560	510	520	36	20	442.5	70	27	M16 x 2.00	477	MS3188 / MS3192	45.30
HM3192	TR460 x 5	580	540	540	36	20	462.5	75	27	M16 x 2.00	497	MS3188 / MS3192	50.4
HM3196	TR480 x 5	620	560	580	36	20	482.5	75	27	M16 x 2.00	527	MS3196	62.2

HM3000 Series

Part No.	D1 Thread	D3	D4	g	S	T	D6	C	I	f	B.C.	Lock Clip Part No.	Wt. kg
HM3044	TR220 x 4	260	242	242	20	9	222.0	30	12	M6 x 1.00	229	MS3044	3.09
HM3048	TR240 x 4	290	270	270	20	10	242.0	34	15	M8 x 1.25	253	MS3048 / MS3052	5.16
HM3052	TR260 x 4	310	290	290	20	10	262.0	34	15	M8 x 1.25	273	MS3048 / MS3052	5.67
HM3056	TR280 x 4	330	310	310	24	10	282.0	38	15	M8 x 1.25	293	MS3056	6.78
HM3060	TR300 x 4	360	336	336	24	12	302.0	42	15	M8 x 1.25	316	MS3060	9.62
HM3064	TR320 x 5	380	356	356	24	12	322.5	42	15	M8 x 1.25	335	MS3064 / MS3068	9.94
HM3068	TR340 x 5	400	376	376	24	12	342.5	45	15	M8 x 1.25	355	MS3064 / MS3068	11.70
HM3072	TR360 x 5	420	394	394	28	13	362.5	45	15	M8 x 1.25	374	MS3072	12.0
HM3076	TR380 x 5	450	422	422	28	14	382.5	48	18	M10 x 1.50	398	MS3076 / MS3080	14.9
HM3080	TR400 x 5	470	442	442	28	14	402.5	52	18	M10 x 1.50	418	MS3076 / MS3080	16.9
HM3084	TR420 x 5	490	462	462	32	14	422.5	52	18	M10 x 1.50	438	MS3084	17.4
HM3088	TR440 x 5	520	490	490	32	15	442.5	60	21	M12 x 1.75	462	MS3088 / MS3092	26.2
HM3092	TR460 x 5	540	510	510	32	15	462.5	60	21	M12 x 1.75	482	MS3088 / MS3092	29.6
HM3096	TR480 x 5	560	530	530	36	15	482.5	60	21	M12 x 1.75	502	MS3096	28.3