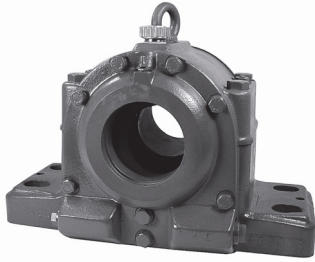


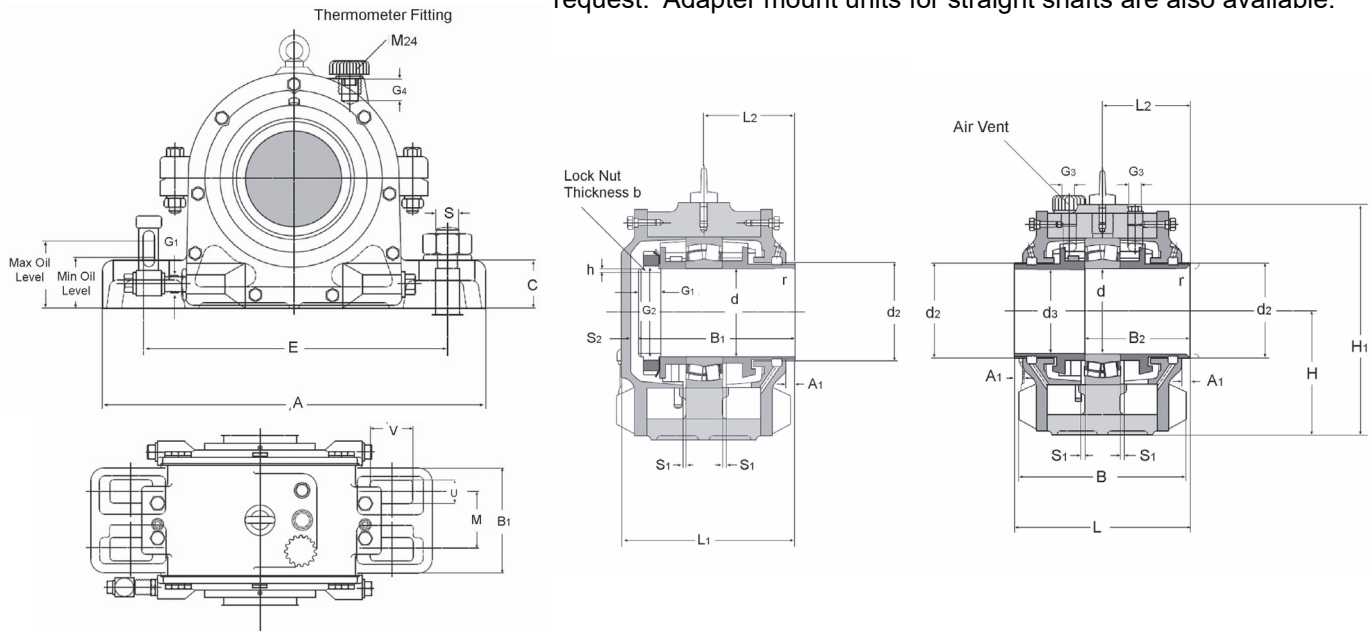
# Plummer Block Housings



## HFO 200 Series - Oil Lubrication



The HFO/HFOE housings are suitable for high speeds and / or temperatures. These housings include Oil Splash Rings for assisting lubrication of the bearing in high speed applications, such as fans. Housings are Cast Iron. Ductile housings are also available on request. Labyrinth seals are standard and housing can be supplied with open or closed ends. Air vents and oil level gauges are included with each housing. Circulating oil provisions can also be included on request. Adapter mount units for straight shafts are also available.



Part No.	d	A	B	B <sub>1</sub>	B <sub>2</sub>	C	d <sub>2</sub>	d <sub>3</sub>	E	H	H <sub>1</sub>	L	L <sub>1</sub>	M	S	S <sub>1</sub>	U	V	Hsg Wt. kg
HFO 217	85	330	182	110	105	35	96	83	260	125	230	180	165	60	M20	5	24	40	33
HFO 218	90	360	190	120	112	45	100	88	290	135	245	190	170	70	M20	5	24	40	42
HFO 219	95	360	210	120	118	40	105	93	290	140	255	200	184	80	M20	5	24	40	45
HFO 220	100	400	205	130	123	50	110	98	320	145	270	206	186	75	M24	5	28	45	55
HFO 222	110	420	216	145	138	50	120	108	347	160	290	229	203	75	M24	5	28	45	70
HFO 224	120	420	245	170	164	55	135	118	347	170	315	276	240	90	M24	8	28	45	95
HFO 226	130	450	260	180	164	60	145	128	377	180	335	270	240	100	M24	8	28	45	100
HFO 228	140	500	265	180	170	65	160	138	415	190	355	280	250	100	M30	8	35	45	125
HFO 230	150	540	265	190	173	65	170	148	450	200	375	280	250	115	M30	8	35	50	140
HFO 232	160	560	280	205	193	65	178	158	470	215	405	316	280	120	M30	10	35	50	165

Part No.	Part Code	A1	G1	G3	GA	G4	h	L2	r	Bearing Part No.	Basic Dynamic Load Rating C kN	Locknut Part No.	Lock-washer Part No.	Oil Quantity in Liters
HFO 217	GOS 217	7.5	R 1/2	R 3/8	M85 x 2	27	4	90	1.6	22217	210	KM 17	MB 17	0.7
HFO 218	GOS 218	10		R 3/8	M90 x 2	27	4	95	1.6	22218	250	KM 18	MB 18	0.8
HFO 219	GOS 219	8		R 3/8	M95 x 2	27	4	100	1.6	22219	280	KM 19	MB 19	0.9
HFO 220	GOS 220	10		R 1/2	M100 x 2	27	4	103	1.6	22220	310	KM 20	MB 20	1.0
HFO 222	GOS 222	13		R 1/2	M110 x 2	27	5	114.5	1.6	22222	405	KM 22	MB 22	1.5
HFO 224	GOS 224	18		R 1/2	M120 x 2	27	6	138	1.6	22224	465	KM 24	MB 24	1.9
HFO 226	GOS 226	15		R 1/2	M130 x 2	32	6	135	2.5	22226	545	KM 26	MB 26	2.5
HFO 228	GOS 228	15		R 3/4	M140 x 2	33	6	140	2.5	22228	605	KM 28	MB 28	2.7
HFO 230	GOS 230	15		R 3/4	M150 x 2	44	6	140	2.5	22230	730	KM 30	MB 30	3.0
HFO 232	GOS 232	18		R 3/4	M160 x 3	38	7	158	2.5	22232	860	KM 32	MB 32	3.3

Dimensions in mm