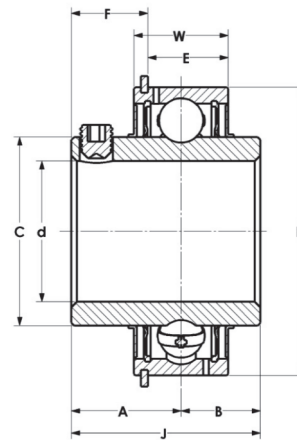


Ball Bearing Inserts



SER 200 PTI Series

- Set Screw Lock
- Normal Duty
- Metric and Inch Bores
- OD Snap Ring
- Wide Inner Ring
- Steel Cage



Part No.	Shaft Size d		Dimensions (mm) (in)									Load Ratings		Max rpm	Wt. kg
	mm	in	A	B	C	D	E	F	G	J	W	Dynamic C N lbf	Static C ₀ N lbf		
SER201-12MM	12		19.5	11.5	28.3	47	12.06	15.08	52.7	31	15.9	12800	6600	8800	0.3
SER202-15MM	15														
SER203-17MM	17														
SER201-8		1/2	0.77	0.45	1.11	1.850	0.47	0.59	2.07	1.22	0.63	2900	2500		
SER202-10		5/8													
SER203-11		11/16													
SER204-20MM	20		19.5	11.5	28.3	47	12.06	15.08	52.7	31	15.9	12800	6600	7450	0.3
SER204-12		3/4	0.77	0.45	1.11	1.850	0.47	0.59	2.07	1.22	0.63	2900	2500		
SER205-25MM	25		21.8	13.1	34.0	52	15.29	15.78	57.9	34.9	19.1	13810	7700	6250	0.3
SER205-14		7/8	0.86	0.52	1.34	2.047	0.60	0.62	2.28	1.37	0.75	3140	1750		
SER205-15		15/16													
SER205-16		1													
SER206-30MM	30		22.2	15.9	40.3	62	17.02	15.93	67.7	38.1	22.2	18920	11000	5300	0.4
SER206-18		1-1/8	0.87	0.63	1.59	2.441	0.67	0.63	2.67	1.50	0.87	4300	2500		
SER206-19		1-3/16													
SER206-20		1-1/4													
SER207-35MM	35		25.4	17.5	46.9	72	18.62	18.32	78.6	42.9	23.8	25430	15130	4500	0.5
SER207-20		1-1/4	1.0	0.69	1.85	2.835	0.73	0.72	3.09	1.69	0.94	5780	3440		
SER207-22		1-3/8													
SER207-23		1-7/16													
SER208-40MM	40		30.2	19	52.4	80	22.62	21.1	86.6	49.2	27.8	32030	19580	4000	0.7
SER208-24		1-1/2	1.19	0.75	2.06	3.150	0.89	0.83	3.41	1.94	1.09	7820	4450		
SER209-45MM	45		30.2	19	57.4	85	22.62	21.1	91.6	49.2	27.8	32500	20280	3700	0.8
SER209-26		1-5/8	1.19	0.75	2.26	3.347	0.89	0.83	3.61	1.94	1.09	7390	4610		
SER209-27		1-11/16													
SER209-28		1-3/4													
SER210-50MM	50		32.6	19	61.8	90	22.62	23.84	96.5	51.6	28.6	35000	22830	3400	0.9
SER210-30		1-7/8	1.28	0.75	2.43	3.543	0.89	0.94	3.80	2.03	1.13	7900	5190		
SER210-31		1-15/16													
SER210-32		2													
SER211-55MM	55		33.4	22.2	68.7	100	24.22	23.84	106.5	55.6	30.2	43030	28950	3100	1.2
SER211-32		2	1.31	0.87	2.70	3.937	0.95	0.94	4.19	2.19	1.19	9780	6580		
SER211-34		2-1/8													
SER211-35		2-3/16													
SER212-60MM	60		39.7	25.4	75.7	110	25.82	29.4	116.6	65.1	31.8	52000	35590	2800	1.6
SER212-36		2-1/4	1.56	1.00	2.98	4.337	1.02	1.16	4.59	2.56	1.25	11800	8090		
SER212-38		2-3/8													
SER212-39		2-7/16													