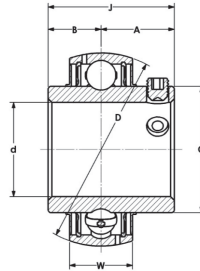


# High Temp Ball Bearing Inserts



## HT-UC 200 PTI Series

**Normal Duty**  
**Set Screw Locking**  
**Metric and Inch Bores**  
**Steel Cage**



### Key Features:

- Heat-Stabilized Bearing Races for temperatures below 200°C (390°F).
- Stainless Steel Shields and Silicon bearing seals.
- Steel Ball Retainers.
- High Temp Calcium Sulfate Complex Lubricant.
- Other lubes also available. Consult PTI.
- C4 Internal Clearance.
- Anti-Rotation pin on the insert OD for loose housing fit.

Part No.	Shaft Size d		Dimensions (mm) (in)						Basic Load Rating C N lbf	Basic Static Load Rating C <sub>0</sub> N lbf	Max rpm	Wt. kg
	mm	in	A	B	C	D	J	W				
UC201-12MM-40-HT UC202-15MM-40-HT UC203-17MM-40-HT	12 15 17		16	9.9	24.6	40	25.9	15	9570	4700		
UC201-8-40-HT UC202-10-40-HT UC203-11-40-HT		1/2 5/8 11/16	0.63	0.39	0.97	1.575	1.02	0.59	2170	1065	8800	0.12
UC201-12MM-HT UC202-15MM-HT UC203-17MM-HT	12 15 17		18.3	12.7	28.5	47	31	17	12800	6600		
UC201-8-HT UC202-10-HT UC203-11-HT		1/2 5/8 11/16	0.72	0.50	1.12	1.850	1.22	0.67	2900	2500	8800	0.2
UC204-20MM-HT UC204-12-HT	20		18.3	12.7	28.5	47	31	17	12800 2900	6600 2500	7450	0.4
UC205-25MM-HT UC205-14-HT UC205-15-HT UC205-16-HT*	25		19.8	14.3	34	52	34.1	17	13810 3140	7700 1750	6250	0.4
UC205-14-HT UC205-15-HT UC205-16-HT*		7/8 15/16 1	0.78	0.56	1.34	2.047	1.34	0.67				
UC206-30MM-HT UC206-18-HT UC206-19-HT UC206-20-HT*	30		22.2	15.9	40	62	38.1	19	18920 4300	11000 2500	5300	0.7
UC206-18-HT UC206-19-HT UC206-20-HT*		1-1/8 1-3/16 1-1/4	0.87	0.63	1.57	2.441	1.50	0.75				
UC207-35MM-HT UC207-20-HT* UC207-22-HT UC207-23-HT*	35		25.4	17.5	46.7	72	42.9	20	25430 5780	15130 3440	4500	1.08
UC207-20-HT* UC207-22-HT UC207-23-HT*		1-1/4 1-3/8 1-7/16	1.0	0.69	1.84	2.835	1.69	0.79				
UC208-40MM-HT UC208-24-HT*	40		30.2	19	52.7	80	49.2	21	32030 7280	19580 4450	4000	1.4
UC208-24-HT*		1-1/2	1.19	0.75	2.07	3.150	1.94	0.83				
UC209-45MM-HT UC209-26-HT UC209-27-HT UC209-28-HT*	45		30.2	19	57.3	85	49.2	22	32500 7390	20280 4610	3700	1.5
UC209-26-HT UC209-27-HT UC209-28-HT*		1-5/8 1-11/16 1-3/4	1.19	0.75	2.26	3.347	1.94	0.87				
UC210-50MM-HT UC210-30-HT UC210-31-HT UC210-32-HT*	50		32.6	19	62.2	90	51.6	24	35000 7900	22830 5190	3400	1.8
UC210-30-HT UC210-31-HT UC210-32-HT*		1-7/8 1-15/16 2	1.28	0.75	2.45	3.543	2.03	0.94				
UC211-55MM-HT UC211-32-HT UC211-34-HT UC211-35-HT	55		33.4	22.2	68.8	100	55.6	25	43030 9780	28950 6580	3100	2.4
UC211-32-HT UC211-34-HT UC211-35-HT		2 2-1/8 2-3/16	1.31	0.88	2.71	3.937	2.19	0.98				
UC212-60MM-HT UC212-36-HT UC212-38-HT UC212-39-HT	60		39.7	25.4	75.4	110	65.1	27	52000 11800	35590 8090	2800	2.9
UC212-36-HT UC212-38-HT UC212-39-HT		2-1/4 2-3/8 2-7/16	1.56	1.00	2.97	4.331	2.56	1.06				
UC213-65MM-HT UC213-40-HT*	65		39.7	25.4	82.4	120	65.1	28	60720 13800	43510 9890	2600	3.9
UC213-40-HT*		2-1/2	1.56	1.00	3.24	4.724	2.56	1.10				
UC214-70MM-HT UC214-43-HT UC214-44-HT	70		44.4	30.2	87	125	74.6	30	61160 13900	44000 9900	2450	2.3
UC214-43-HT UC214-44-HT		2-11/16 2-3/4	1.75	1.19	3.43	4.921	2.94	1.18				
UC215-75MM-HT UC215-46-HT UC215-47-HT UC215-48-HT*	75		44.5	33.3	92	130	77.8	32	62000 14000	44220 10050	2300	4.8
UC215-46-HT UC215-47-HT UC215-48-HT*		2-7/8 2-15/16 3	1.75	1.31	3.62	5.118	3.06	1.26				
UC216-80MM-HT UC216-50-HT	80		49.3	33.3	98.5	140	82.6	33	70400 16000	54000 12200	2150	6.4
UC216-50-HT		3-1/8	1.94	1.31	3.88	5.512	3.25	1.30				

Note: Stainless Steel inserts and other sizes are available on request. For operating temperatures above 250° C, multiply ratings by 0.9. \* Indicates stocked items, the rest can be assembled by PTI for quick delivery.