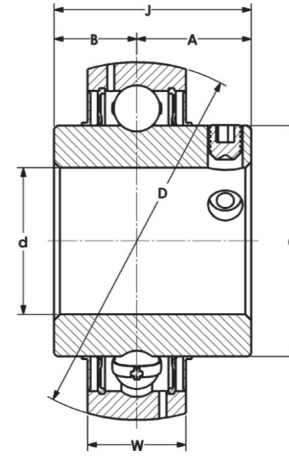


# Medium Duty Ball Bearing Inserts



## UCX PTI Series

Medium Duty  
Set Screw Lock  
Metric and Inch Bores  
Steel Cage



Part No.	Shaft Size d		Dimensions (mm) (in)						Basic load ratings		Max rpm	Wt. kg
	mm	in	A	B	C	D	J	W	Dynamic	Static		
									C kn lbf	C kn lbf		
UCX05-25MM	25		22.2	15.9	40	62	38.1	19	19000	11100	5300	0.4
UCX05-16		1	0.87	0.63	1.57	2.441	1.50	0.75	4400	2540		
UCX06-30MM	30		25.4	17.5	46.7	72	42.9	20	25500	15180	4500	0.5
UCX06-18		1-1/8	1.00	0.69	1.84	2.835	1.69	0.79	5800	3450		
UCX06-19		1-3/16										
UCX06-20		1-1/4										
UCX07-35MM	35		30.2	19.1	52.7	80	49.2	21	28930	17640	4000	0.6
UCX07-20		1-1/4	1.19	0.75	2.07	3.150	1.94	0.83	6575	4010		
UCX07-23		1-7/16										
UCX08-40MM	40		30.2	19.1	57.3	85	49.2	22	32490	20240	3700	0.7
UCX08-24		1-1/2	1.19	0.75	2.26	3.346	1.94	0.87	7385	4600		
UCX09-45MM	45		32.6	19.1	62.2	90	51.6	24	34760	22880	3400	0.9
UCX09-27		1-11/16	1.28	0.75	2.45	3.543	2.03	0.94	7900	5200		
UCX09-28		1-3/4										
UCX10-50MM	50		33.4	22.2	68.8	100	55.6	25	42680	29040	3100	1.1
UCX10-31		1-15/16	1.31	0.87	2.71	3.937	2.19	0.98	9700	6600		
UCX10-32		2										
UCX11-55MM	55		39.7	25.4	75.4	110	65.1	27	51920	35860	2800	1.5
UCX11-35		2-3/16	1.56	1.00	2.97	4.331	2.56	1.06	11800	8150		
UCX11-36		2-1/4										
UCX12-60MM	60		39.7	25.4	82.1	120	65.1	28	56760	39680	2600	2
UCX12-39		2-7/16	1.56	1.00	3.23	4.724	2.56	1.10	12900	9020		
UCX13-60MM	60		44.4	30.2	87	125	74.6	30	61600	43560	2450	2.3
UCX13-65MM	65		1.75	1.19	3.43	4.921	2.94	1.18	14000	9900		
UCX13-39		2-7/16										
UCX13-40		2-1/2										
UCX14-70MM	70		44.5	33.3	92	130	77.8	32	65560	66560	2300	2.6
UCX14-43		2-11/16	1.75	1.31	3.62	5.118	3.06	1.26	14900	10800		
UCX15-75MM	75		49.3	33.3	98.5	140	82.6	33	71280	52320	2150	3.2
UCX15-47		2-15/16	1.94	1.31	3.88	5.512	3.25	1.30	16200	11890		
UCX15-48		3										
UCX16-80MM	80		51.6	34.1	105	150	85.7	35	82200	61160	2100	4.1
UCX16-50		3-1/8	2.03	1.34	4.13	5.906	3.37	1.38	18700	13900		
UCX17-85MM	85		56.3	39.7	111.7	160	96	37	94380	70400	2000	5
UCX17-55		3-7/16	2.22	1.56	4.4	6.299	3.78	1.46	21450	16000		
UCX17-56		3-1/2										
UCX18-90MM	90		61.1	42.9	118	170	104	38	107360	80520	1900	5.5
UCX18-56		3-1/2	2.41	1.69	4.65	6.693	4.09	1.50	24400	18300		
UCX20-100MM	100		68.3	49.2	132.5	190	117.5	42	133000	104000	1700	9.2
UCX20-63		3-15/16	2.69	1.94	5.22	7.480	4.63	1.65	30000	23500		
UCX20-64		4										