

# Ball Bearing Inserts



## SB 200 PTI Series

## CSB 200 PTI Series

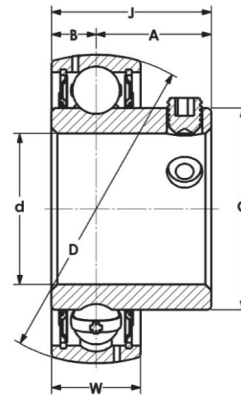
Normal Duty

Set Screw Lock

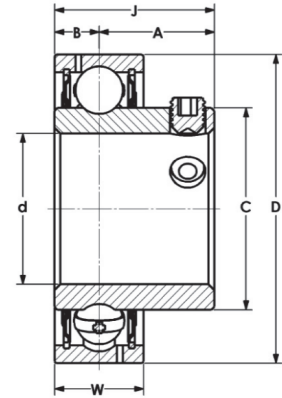
Metric and Inch Bores

Narrow Inner Ring

Steel Cage



Beveled (SB)



Cylindrical (CSB)

Part No.		Shaft Size d		Dimensions (mm) (in)						Basic Load Rating C N lbf	Basic Static Load Rating C <sub>0</sub> N lbf	Max rpm	Wt. kg				
Beveled	Cylindrical	mm	in	A	B	C	D	J	W								
SB201-12MM	CSB201-12MM	12		16	6.0	24.7	40	22.0	12.0	9400	4660	8800	0.15				
SB202-15MM	CSB202-15MM	15															
SB203-17MM	CSB203-17MM	17															
SB201-8	CSB201-8		1/2	0.63	0.24	0.97	1.575	0.87	0.472	2140	1060	8800	0.15				
SB202-10	CSB202-10		5/8														
SB203-11	CSB203-11		11/16														
SB204-20MM	CSB204-20MM	20		18	7.0	28.50	47	25.0	14	12800	6600	7450	0.1				
SB204-12	CSB204-12		3/4	0.71	0.28	1.12	1.850	0.98	0.551					2900	2500	7450	0.1
SB205-25MM	CSB205-25MM	25		19.5	7.5	34.01	52	27.0	15	13810	7700	6250	0.1				
SB205-14	CSB205-14		7/8	0.77	0.30	1.34	2.047	1.06	0.591					3140	1750	6250	0.1
SB205-15	CSB205-15		15/16														
SB205-16	CSB205-16		1														
SB206-30MM	CSB206-30MM	30		22	8.0	40.00	62	30.0	16	18920	11000	5300	0.3				
SB206-17	—		1-1/16	0.87	0.31	1.57	2.441	1.18	0.630					4300	2500	5300	0.3
SB206-18	CSB206-18		1-1/8														
SB206-19	CSB206-19		1-3/16														
SB206-20	CSB206-20		1-1/4														
SB207-35MM	CSB207-35MM	35		23.5	8.5	46.69	72	32.0	17	25430	15130	4500	0.4				
SB207-20	CSB207-20		1-1/4	0.93	0.33	1.84	2.835	1.26	0.669					5780	3440	4500	0.4
SB207-22	CSB207-22		1-3/8														
SB207-23	CSB207-23		1-7/16														
SB208-40MM	CSB208-40MM	40		25	9.0	52.70	80	34.0	18	32030	19580	4000	0.5				
SB208-24	CSB208-24		1-1/2	0.98	0.35	2.07	3.150	1.34	0.709					7280	4450	4000	0.5
SB209-45MM	CSB209-45MM	45		31	10.2	57.30	85	41.2	19	32500	20400	3700	0.6				
SB209-26	CSB209-26		1-5/8	1.22	0.40	2.26	3.347	1.62	0.748					7390	20280	3700	0.6
SB209-27	CSB209-27		1-11/16														
SB209-28	CSB209-28		1-3/4														
SB210-50MM	CSB210-50MM	50		32.6	10.9	62.20	90	43.5	20	35000	22830	3400	0.8				
SB210-30	CSB210-30		1-7/8	1.28	0.43	2.45	3.543	1.71	0.787					7900	5190	3400	0.8
SB210-31	CSB210-31		1-15/16														
SB210-32	CSB210-32		2														
SB211-55MM	CSB211-55MM	55		33.5	11.8	69.8	100	45.3	21	43030	28950	3100	1.1				
SB211-32	CSB211-32		2	1.32	0.46	2.75	3.937	1.78	0.827					9780	6580	3100	1.1
SB211-34	CSB211-34		2-1/8														
SB211-35	CSB211-35		2-3/16														
SB212-60MM	CSB212-60MM	60		38.8	14.9	76.5	110	53.7	22	52000	35590	2800	1.3				
SB212-36	CSB212-36		2-1/4	1.53	0.59	3.01	4.331	2.11	0.866					11800	8090	2800	1.3
SB212-38	CSB212-38		2-3/8														
SB212-39	CSB212-39		2-7/16														