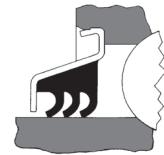
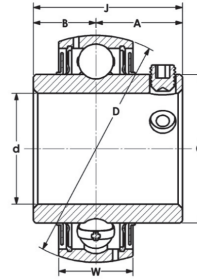


Ball Bearing Inserts

UC 200 PTI Series

- Normal Duty
- Set Screw Lock
- Metric and Inch Bores
- Wide Inner Ring
- Steel Cage
- Lip Seal & Flinger or Triple Lip Seal



L3 - Triple Lip Seal option

Part No.	Part No.* Triple Lip Seal	Shaft Size d		Dimensions (mm) (in)						Basic Load Rating C N lbf	Basic Static Load Rating C ₀ N lbf	Max rpm	Wt. kg
		mm	in	A	B	C	D	J	W				
UC201-12MM-40	—	12		16	9.9	24.6	40	25.9	15	9570	4700		
UC202-15MM-40	—	15											
UC203-17MM-40	—	17											
UC201-8-40	—		1/2	0.63	0.39	0.97	1.57	1.02	0.59	2170	1065	8800	0.12
UC202-10-40	—		5/8										
UC203-11-40	—		11/16										
UC201-12MM	—	12		18.3	12.7	28.5	47	31	17	12800	6600		
UC202-15MM	—	15											
UC203-17MM	—	17											
UC201-8	—		1/2	0.72	0.50	1.12	1.850	1.22	0.67	2900	2500	8800	0.2
UC202-10	—		5/8										
UC203-11	—		11/16										
UC204-20MM	—	20		18.3	12.7	28.5	47	31	17	12800	6600		
UC204-12	UC204-12L3		3/4	0.72	0.50	1.12	1.850	1.22	0.67	2900	2500	7450	0.4
UC205-25MM	—	25		19.8	14.3	34	52	34.1	17	13810	7700		
UC205-14	—		7/8	0.78	0.56	1.34	2.047	1.34	0.67	3140	1750	6250	0.4
UC205-15	—		15/16										
UC205-16	UC205-16L3		1										
UC206-30MM	—	30		22.2	15.9	40	62	38.1	19	18920	11000		
UC206-17	—		1-1/16	0.87	0.63	1.57	2.441	1.50	0.75	4300	2500	5300	0.7
UC206-18	—		1-1/8										
UC206-19	UC206-19L3		1-3/16										
UC206-20	UC206-20L3		1-1/4										
UC207-35MM	—	35		25.4	17.5	46.7	72	42.9	20	25430	15130		
UC207-20	UC207-20L3		1-1/4	1.0	0.69	1.84	2.835	1.69	0.79	5780	3440	4500	1.1
UC207-22	—		1-3/8										
UC207-23	UC207-23L3		1-7/16										
UC208-40MM	—	40		30.2	19	52.7	80	49.2	21	32030	19580		
UC208-24	UC208-24L3		1-1/2	1.19	0.75	2.07	3.150	1.94	0.83	7280	4450	4000	1.4
UC209-45MM	—	45		30.2	19	57.3	85	49.2	22	32500	20280		
UC209-26	—		1-5/8	1.19	0.75	2.26	3.347	1.94	0.87	7390	4610	3700	1.5
UC209-27	—		1-11/16										
UC209-28	UC209-28L3		1-3/4										
UC210-50MM	UC210-50MML3	50		32.6	19	62.2	90	51.6	24	35000	22830		
UC210-30	—		1-7/8	1.28	0.75	2.45	3.543	2.03	0.94	7900	5190	3400	1.8
UC210-31	UC210-31L3		1-15/16										
UC210-32	—		2										
UC211-55MM	—	55		33.4	22.2	68.8	100	55.6	25	43030	28950		
UC211-32	UC211-32L3		2	1.31	0.87	2.71	3.937	2.19	0.98	9780	6580	3100	2.4
UC211-34	—		2-1/8										
UC211-35	UC211-35L3		2-3/16										
UC212-60MM	—	60		39.7	25.4	75.4	110	65.1	27	52000	35590		
UC212-36	—		2-1/4	1.56	1.00	2.97	4.331	2.56	1.06	11800	8090	2800	2.9
UC212-38	—		2-3/8										
UC212-39	UC212-39L3		2-7/16										
UC213-65MM	—	65		39.7	25.4	82.4	120	65.1	28	60720	43510		
UC213-40	—		2-1/2	1.56	1.00	3.24	4.724	2.56	1.10	13800	9890	2600	3.9
UC214-70MM	—	70		44.4	30.2	87	125	74.6	30	61160	44000		
UC214-43	—		2-11/16	1.75	1.19	3.43	4.921	2.94	1.18	13900	9900	2450	2.3
UC214-44	—		2-3/4										
UC215-75MM	—	75		44.5	33.3	92	130	77.8	32	62000	44220		
UC215-46	—		2-7/8	1.75	1.31	3.62	5.118	3.06	1.26	14000	10050	2300	4.8
UC215-47	UC215-47L3		2-15/16										
UC215-48	—		3										
UC216-80MM	—	80		49.3	33.3	98.5	140	82.6	33	70400	54000		
UC216-50	—		3-1/8	1.94	1.31	3.88	5.512	3.25	1.30	16000	12200	2150	6.4
UC217-85MM	—	85		51.6	34.1	106.0	150	85.7	35	83160	63360		
UC217-52	—		3-1/4	2.03	1.35	4.17	5.906	3.37	1.38	18900	14400	2000	7.1
UC217-55	—		3-7/16										
UC218-90MM	—	90		56.3	39.71	111.7	160	96	37	100760	77440		
UC218-55	—		3-7/16	2.22	1.56	4.40	6.299	3.78	1.46	22900	17600	1900	9.3
UC218-56	—		3-1/2										
UC220-100MM	—	100		66	39.5	137.1	180	109.5	49	120000	92000	1600	12.3

Note: *Sizes not listed can also be provided from production.