

# Industrial Power Transmission and Mounted Bearing Products

## Custom Engineering and Manufacturing

**IPTCI**  
BEARINGS

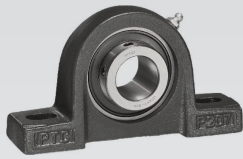
**PTI**  
PT. INTERNATIONAL

**LMS**  
BEARINGS

**WINKEL**

**eich**

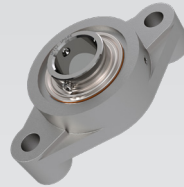
**ROLL-RING**<sup>®</sup>



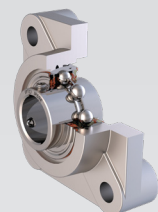
Standard Mounted Ball Bearings



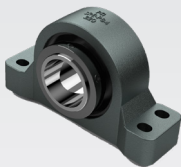
Corrosion Resistant Mounted Ball Bearings



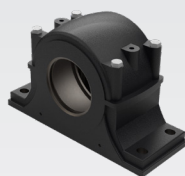
Stand-Off Series Mounted Ball Bearings



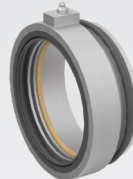
IP69K Series Mounted Ball Bearings



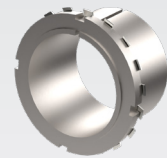
SRE/SR2 Roller Bearings



SAF/SDAF Bearing Housings



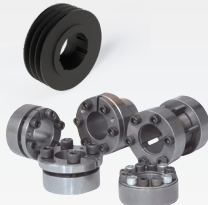
SAF/SDAF Housing Seals



SAF/SDAF Housing Adapters



Fan Bearings



Sheaves and Bushings



Chain and Sprockets



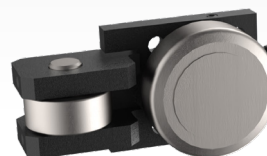
ROLL-RING Chain and Belt Tensioners



Gear and Rack



Eich Steel Bearings



Winkel Linear Bearings



LMS Radial Bearings

»» Quality Products »» Outstanding Service »» Exceptional Value

# We Keep Things Moving – Forward.

Combining the complementary strengths of the IPTCI, PTI and LMS product lines, Solve Industrial Motion Group has grown to become a leading provider of high-quality power transmission components and industrial-grade bearings.

## Superior Product Availability

Solve provides complete coverage of metric and American Standard sizes, with a comprehensive product catalog of 25,000+ bearings and power transmission components. With the Solve Express™ program, you'll have the parts you need ASAP, with same-day delivery available on many critical products.

## Quality + Performance + Price

Our highly honed supply chain has been forged and tempered with demanding quality assurance programs, to ensure that our products perform under the most demanding conditions. Better yet, that performance always comes at a fair price — the Solve Sweet Spot™ provides the perfect blend of performance and value.



## Expertise You Can Rely On

With Solve, you can count on responsive, knowledgeable technical support and extensive engineering capabilities earned from more than 50 years of experience solving bearing and power transmission challenges. For really tough problems, we can custom engineer and manufacture bearings and components to fit virtually any need.

## Attentive Service from People You Trust

The strength of our product catalog is complemented by our unparalleled commitment to customer service. Solve 360 Service™ gives you 24/7 access to our team of highly trained technical support professionals — with an average 15+ years of experience — who will always go the extra mile to get you what you need, when you need it.