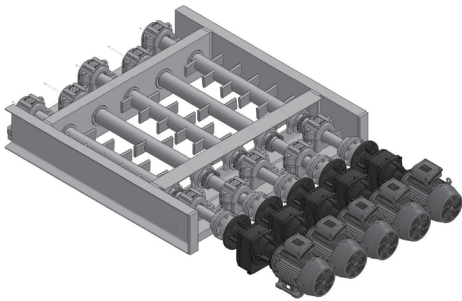


PRODUCT MODIFICATIONS MADE EASY

A Case Study



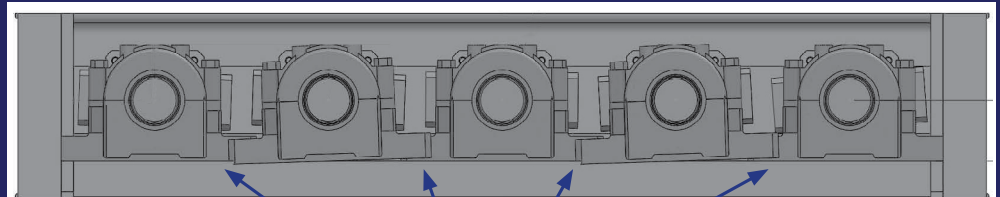
And Completed In Under Two Months



Franklin Miller
Custom DELUMPER L

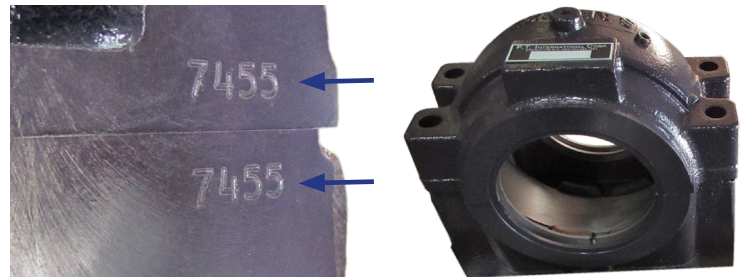
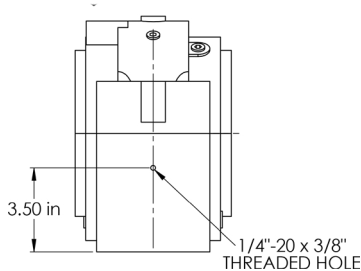
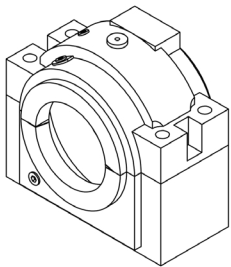
BACKGROUND Franklin Miller is a manufacturer of agricultural and waste water equipment. They created a new machine designed to reduce agglomerates for one of their customers that produces crop fertilizer.

THE CHALLENGE Due to limited available space in the application, the OEM's design incorporated five parallel shafts requiring SAF222 housings positioned so close together that the feet couldn't fit properly within the equipment. The OEM's distributor had difficulty finding a manufacturer capable or willing to help with the required modifications until they reached out to PTI.



Overlapping bases

THE SOLUTION PTI engineers consulted with the customer and modified SAF222 housings already in stock at PTI's Charlotte, NC - USA headquarters to meet the space constraints of the equipment.



Modifications included:

Machined feet off housings to fit in the equipment – essentially creating a tapped base design.

Extended cap screws to allow for mounting to structure.

Match marked housing caps and bases for easy pairing.

Used split seals for easier assembly and removal of the split blocks. This modification also allowed the gear box and motor to stay in place and for easier impeller repair.

THE RESULT Franklin Miller received the ten modified housings within two months of the distributor's initial inquiry to PTI. The retrofits allowed the machine builder to mount the housings in succession while meeting their confined space requirements.

PTI'S ABILITY At PTI, we combine our engineering expertise with a focus on flexibility, ingenuity, and stock availability. Our customers' successes are our successes.



PTI Corporate Headquarters Charlotte, NC - USA
24/7 Inside Sales: 704-588-1091 Toll-Free: 800-763-4434
ptiinfo@ptintl.com

www.ptintl.com