

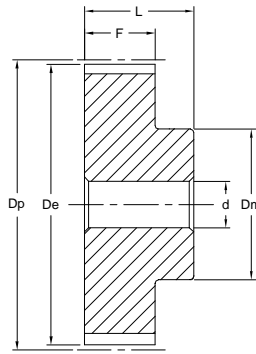
# Metric Timing Pulleys



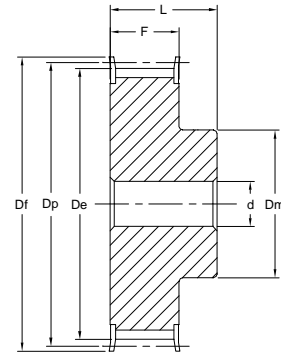
## AT Series - 5 mm Pitch Aluminum, Pilot Bore

### Part No: 21AT5/20-2

- 21 = Length thru Bore
- AT5 = Tooth Profile and Pitch
- 20 = Number of Teeth
- 2 = Number of Flanges



Type 6



Type 6 F

### AT 5 mm Pitch x 10 mm Belt Width

Dimensions in mm

Part No.	Part Code	Teeth	Type	Dp	De	Df	Dm	F	L	d	Wt. kg
21AT5/12-2	12ST5-21	12	6F	19.25	17.85	23.0	11	15	21	4	0.018
21AT5/14-2	14ST5-21	14	6F	22.45	21.05	25.0	14	15	21	4	0.019
21AT5/15-2	15ST5-21	15	6F	24.05	22.65	28.0	16	15	21	6	0.021
21AT5/16-2	16ST5-21	16	6F	25.60	24.20	32.0	18	15	21	6	0.025
21AT5/18-2	18ST5-21	18	6F	28.80	27.40	32.0	20	15	21	6	0.031
21AT5/19-2	19ST5-21	19	6F	30.40	29.00	36.0	22	15	21	6	0.036
21AT5/20-2	20ST5-21	20	6F	32.00	30.60	36.0	23	15	21	6	0.038
21AT5/22-2	22ST5-21	22	6F	35.25	33.85	38.0	24	15	21	6	0.048
21AT5/24-2	24ST5-21	24	6F	38.40	37.00	42.0	26	15	21	6	0.054
21AT5/25-2	25ST5-21	25	6F	40.00	38.60	44.0	26	15	21	6	0.058
21AT5/26-2	26ST5-21	26	6F	41.60	40.20	44.0	26	15	21	6	0.062
21AT5/27-2	27ST5-21	27	6F	43.20	41.80	48.0	30	15	21	8	0.064
21AT5/28-2	28ST5-21	28	6F	44.75	43.35	48.0	32	15	21	8	0.071
21AT5/30-2	30ST5-21	30	6F	47.95	46.55	51.0	34	15	21	8	0.076
21AT5/32-2	32ST5-21	32	6F	51.10	49.70	54.0	38	15	21	8	0.088
21AT5/36-2	36ST5-21	36	6F	57.45	56.05	64.0	38	15	21	8	0.114
21AT5/40-2	40ST5-21	40	6F	63.85	62.45	66.0	40	15	21	8	0.138
21AT5/42-2	42ST5-21	42	6F	67.00	65.60	70.0	40	15	21	8	0.180
21AT5/44-0	44ST5-21	44	6	70.20	68.80	—	45	15	21	8	0.185
21AT5/48-0	48ST5-21	48	6	76.55	75.15	—	50	15	21	8	0.200
21AT5/60-0	60ST5-21	60	6	95.65	94.25	—	65	15	21	8	0.307

### AT 5 mm Pitch x 16 mm Belt Width

Part No.	Part Code	Teeth	Type	Dp	De	Df	Dm	F	L	d	Wt. kg
27AT5/12-2	12ST5-27	12	6F	19.25	17.85	23.0	11	21	27	4	0.022
27AT5/14-2	14ST5-27	14	6F	22.45	21.05	25.0	14	21	27	4	0.026
27AT5/15-2	15ST5-27	15	6F	24.05	22.65	28.0	16	21	27	6	0.029
27AT5/16-2	16ST5-27	16	6F	25.60	24.20	32.0	18	21	27	6	0.035
27AT5/18-2	18ST5-27	18	6F	28.80	27.40	32.0	20	21	27	6	0.043
27AT5/19-2	19ST5-27	19	6F	30.40	29.00	36.0	22	21	27	6	0.049
27AT5/20-2	20ST5-27	20	6F	32.00	30.60	36.0	23	21	27	6	0.053
27AT5/22-2	22ST5-27	22	6F	35.25	33.85	38.0	24	21	27	6	0.054
27AT5/24-2	24ST5-27	24	6F	38.40	37.00	42.0	26	21	27	6	0.076
27AT5/25-2	25ST5-27	25	6F	40.00	38.60	44.0	26	21	27	6	0.081
27AT5/26-2	26ST5-27	26	6F	41.60	40.20	44.0	26	21	27	6	0.085
27AT5/27-2	27ST5-27	27	6F	43.20	41.80	48.0	30	21	27	8	0.090
27AT5/28-2	28ST5-27	28	6F	44.75	43.35	48.0	32	21	27	8	0.092
27AT5/30-2	30ST5-27	30	6F	47.95	46.55	51.0	34	21	27	8	0.105
27AT5/32-2	32ST5-27	32	6F	51.10	49.70	54.0	38	21	27	8	0.123
27AT5/36-2	36ST5-27	36	6F	57.45	56.05	64.0	38	21	27	8	0.160
27AT5/40-2	40ST5-27	40	6F	63.85	62.45	66.0	40	21	27	8	0.193
27AT5/42-2	42ST5-27	42	6F	67.00	65.60	70.0	40	21	27	8	0.205
27AT5/44-0	44ST5-27	44	6	70.20	68.80	—	45	21	27	8	0.228
27AT5/48-0	48ST5-27	48	6	76.55	75.15	—	50	21	27	8	0.280
27AT5/60-0	60ST5-27	60	6	95.65	94.25	—	65	21	27	8	0.430

Note: Finished Bore & Keyway available on request.

# Metric Timing Pulleys

## AT Series - 5 and 10mm Pitch Aluminum, Pilot Bore



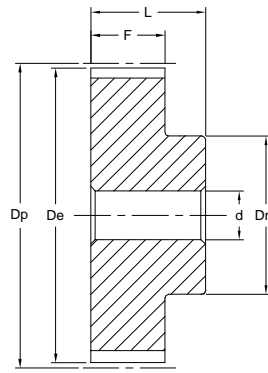
**Part No: 36AT5/20-2**

36 = Length thru Bore

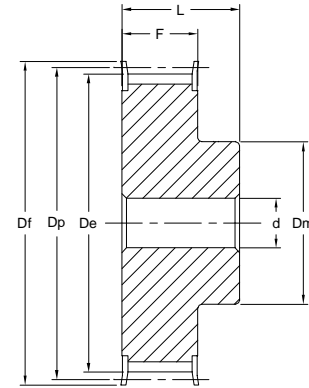
AT5 = Tooth Profile and Pitch

20 = Number of Teeth

2 = Number of Flanges



Type 6



Type 6 F

### AT 5 mm Pitch x 25 mm Belt Width

Dimensions in mm

Part No.	Part Code	Teeth	Type	Dp	De	Df	Dm	F	L	d	Wt. kg
36AT5/12-2	12ST5-36	12	6F	19.25	17.85	23.0	11	30	36	—	0.031
36AT5/14-2	14ST5-36	14	6F	22.45	21.05	25.0	14	30	36	—	0.037
36AT5/15-2	15ST5-36	15	6F	24.05	22.65	28.0	16	30	36	—	0.041
36AT5/16-2	16ST5-36	16	6F	25.60	24.20	32.0	18	30	36	—	0.050
36AT5/18-2	18ST5-36	18	6F	28.80	27.40	32.0	20	30	36	—	0.061
36AT5/19-2	19ST5-36	19	6F	30.40	29.00	36.0	22	30	36	—	0.070
36AT5/20-2	20ST5-36	20	6F	32.00	30.60	36.0	23	30	36	—	0.076
36AT5/22-2	22ST5-36	22	6F	35.25	33.85	38.0	24	30	36	—	0.080
36AT5/24-2	24ST5-36	24	6F	38.40	37.00	42.0	26	30	36	—	0.109
36AT5/25-2	25ST5-36	25	6F	40.00	38.60	44.0	26	30	36	—	0.118
36AT5/26-2	26ST5-36	26	6F	41.60	40.20	44.0	26	30	36	—	0.120
36AT5/27-2	27ST5-36	27	6F	43.20	41.80	48.0	30	30	36	8	0.128
36AT5/28-2	28ST5-36	28	6F	44.75	43.35	48.0	32	30	36	8	0.135
36AT5/30-2	30ST5-36	30	6F	47.95	46.55	51.0	34	30	36	8	0.150
36AT5/32-2	32ST5-36	32	6F	51.10	49.70	54.0	38	30	36	8	0.178
36AT5/36-2	36ST5-36	36	6F	57.45	56.05	64.0	38	30	36	8	0.230
36AT5/40-2	40ST5-36	40	6F	63.85	62.45	66.5	40	30	36	8	0.278
36AT5/42-2	42ST5-36	42	6F	67.00	65.60	70.0	40	30	36	8	0.284
36AT5/44-0	44ST5-36	44	6	70.20	68.80	—	45	30	36	8	0.315
36AT5/48-0	48ST5-36	48	6	76.55	75.15	—	50	30	36	8	0.400
36AT5/60-0	60ST5-36	60	6	95.65	94.25	—	65	30	36	8	0.614

### AT 10 mm Pitch x 16 mm Belt Width

Part No.	Part Code	Teeth	Type	Dp	De	Df	Dm	F	L	d	Wt. kg
31AT10/15-2	15ST10-31	15	6F	47.90	45.90	51	32	21	31	8	0.118
31AT10/16-2	16ST10-31	16	6F	51.05	49.05	54	35	21	31	8	0.134
31AT10/18-2	18ST10-31	18	6F	57.45	55.45	60	40	21	31	8	0.167
31AT10/19-2	19ST10-31	19	6F	60.60	58.60	66.5	44	21	31	8	0.184
31AT10/20-2	20ST10-31	20	6F	63.80	61.80	66.5	46	21	31	8	0.208
31AT10/22-2	22ST10-31	22	6F	70.15	68.15	75	52	21	31	8	0.253
31AT10/24-2	24ST10-31	24	6F	76.55	74.55	83	58	21	31	8	0.288
31AT10/25-2	25ST10-31	25	6F	79.70	77.70	83	60	21	31	8	0.310
31AT10/26-2	26ST10-31	26	6F	82.90	80.90	87	60	21	31	8	0.357
31AT10/27-2	27ST10-31	27	6F	86.10	84.10	91	60	21	31	8	0.364
31AT10/28-2	28ST10-31	28	6F	89.25	87.25	93	60	21	31	8	0.401
31AT10/30-2	30ST10-31	30	6F	95.65	93.65	97	60	21	31	8	0.441
31AT10/32-2	32ST10-31	32	6F	102.00	100.00	106	65	21	31	10	0.493
31AT10/36-2	36ST10-31	36	6F	114.75	112.75	119	70	30	36	10	0.623
31AT10/40-2	40ST10-31	40	6F	127.45	125.45	131	80	21	31	10	0.787
31AT10/44-0	44ST10-31	44	6	140.20	138.20	—	88	21	31	10	0.993
31AT10/48-0	48ST10-31	48	6	152.95	150.95	—	95	21	31	16	1.090
31AT10/60-0	60ST10-31	60	6	191.10	189.10	—	110	21	31	16	1.701

Note: Finished Bore & Keyway available on request.

# Metric Timing Pulleys



## AT Series - 10 mm Pitch Aluminum, Pilot Bore

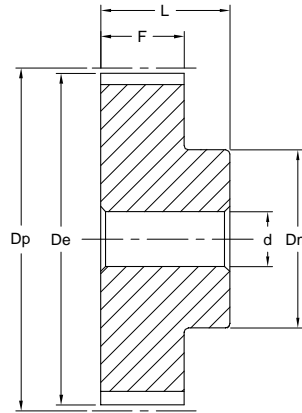
**Part No: 40AT10/20-2**

40 = Length thru Bore

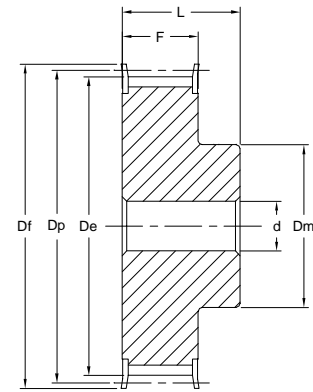
AT10 = Tooth Profile and Pitch

20 = Number of Teeth

2 = Number of Flanges



Type 6



Type 6 F

### AT 10 mm Pitch x 25 mm Belt Width

Dimensions in mm

Part No.	Part Code	Teeth	Type	Dp	De	Df	Dm	F	L	d	Wt. kg
40AT10/15-2	15ST10-40	15	6F	47.90	45.90	51	31	30	40	8	0.152
40AT10/16-2	16ST10-40	16	6F	51.05	49.05	54	35	30	40	8	0.176
40AT10/18-2	18ST10-40	18	6F	57.45	55.45	60	40	30	40	8	0.224
40AT10/19-2	19ST10-40	19	6F	60.60	58.60	66	44	30	40	8	0.247
40AT10/20-2	20ST10-40	20	6F	63.80	61.80	66	46	30	40	8	0.276
40AT10/22-2	22ST10-40	22	6F	70.15	68.15	75	52	30	40	8	0.337
40AT10/24-2	24ST10-40	24	6F	76.55	74.55	83	58	30	40	8	0.392
40AT10/25-2	25ST10-40	25	6F	79.70	77.70	83	60	30	40	8	0.422
40AT10/26-2	26ST10-40	26	6F	82.90	80.90	87	60	30	40	8	0.477
40AT10/27-2	27ST10-40	27	6F	86.10	84.10	91	60	30	40	8	0.536
40AT10/28-2	28ST10-40	28	6F	89.25	87.25	93	60	30	40	8	0.540
40AT10/30-2	30ST10-40	30	6F	95.65	93.65	97	60	30	40	8	0.640
40AT10/32-2	32ST10-40	32	6F	102.00	100.00	106	65	30	40	10	0.693
40AT10/36-2	36ST10-40	36	6F	114.75	112.75	120	70	30	40	10	0.873
40AT10/40-2	40ST10-40	40	6F	127.45	125.45	135	80	30	40	10	1.067
40AT10/44-0	44ST10-40	44	6	140.20	138.20	—	88	30	40	10	1.350
40AT10/48-0	48ST10-40	48	6	152.95	150.95	—	95	30	40	16	1.516
40AT10/60-0	60ST10-40	60	6	191.10	189.10	—	110	30	40	16	2.339

### AT 10 mm Pitch x 32 mm Belt Width

Part No.	Part Code	Teeth	Type	Dp	De	Df	Dm	F	L	d	Wt. kg
47AT10/18-2	18ST10-47	18	6F	57.45	55.45	60	40	37	47	10	0.253
47AT10/19-2	19ST10-47	19	6F	60.60	58.60	66	44	37	47	10	0.286
47AT10/20-2	20ST10-47	20	6F	63.80	61.80	66	46	37	47	12	0.322
47AT10/22-2	22ST10-47	22	6F	70.15	68.15	75	52	37	47	12	0.393
47AT10/24-2	24ST10-47	24	6F	76.55	74.55	83	58	37	47	12	0.475
47AT10/25-2	25ST10-47	25	6F	79.70	77.70	83	60	37	47	12	0.527
47AT10/26-2	26ST10-47	26	6F	82.90	80.90	87	60	37	47	12	0.564
47AT10/27-2	27ST10-47	27	6F	86.10	84.10	91	60	37	47	12	0.602
47AT10/28-2	28ST10-47	28	6F	89.25	87.25	93	60	37	47	12	0.642
47AT10/30-2	30ST10-47	30	6F	95.65	93.65	97	60	37	47	12	0.740
47AT10/32-2	32ST10-47	32	6F	102.00	100.00	106	65	37	47	12	0.844
47AT10/36-2	36ST10-47	36	6F	114.75	112.75	120	70	37	47	16	1.063
47AT10/40-2	40ST10-47	40	6F	127.45	125.45	135	80	37	47	16	1.317
47AT10/44-0	44ST10-47	44	6	140.20	138.20	—	88	37	47	16	1.611
47AT10/48-0	48ST10-47	48	6	152.95	150.95	—	95	37	47	16	1.931
47AT10/60-0	60ST10-47	60	6	191.10	189.10	—	110	37	47	16	3.004

Note: Finished Bore & Keyway available on request.

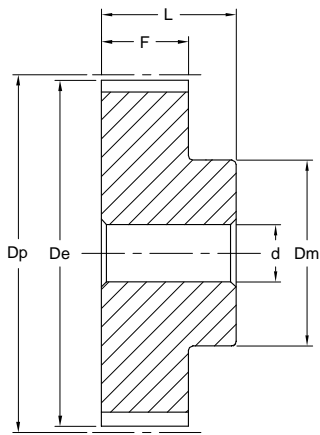
# Metric Timing Pulleys



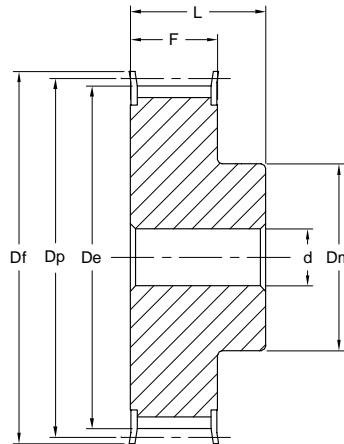
## AT Series - 10 mm Pitch Aluminum - Pilot Bore

### Part No: 66AT10/20-2

- 66 = Length thru Bore
- AT10 = Tooth Profile and Pitch
- 20 = Number of Teeth
- 2 = Number of Flanges



Type 6



Type 6 F

### AT 10 mm Pitch x 50 mm Belt Width

Dimensions in mm

Part No.	Part Code	Teeth	Type	Dp	De	Df	Dm	F	L	d	Wt. kg
66AT10/18-2	18ST10-66	18	6F	57.45	55.45	60	40	56	66	10	0.422
66AT10/19-2	19ST10-66	19	6F	60.60	58.60	66.5	44	56	66	10	0.466
66AT10/20-2	20ST10-66	20	6F	63.80	61.80	66.5	46	56	66	12	0.520
66AT10/22-2	22ST10-66	22	6F	70.15	68.15	75	52	56	66	12	0.570
66AT10/24-2	24ST10-66	24	6F	76.55	74.55	83	58	56	66	12	0.736
66AT10/25-2	25ST10-66	25	6F	79.70	77.70	83	60	56	66	12	0.766
66AT10/26-2	26ST10-66	26	6F	82.90	80.90	87	60	56	66	12	0.816
66AT10/27-2	27ST10-66	27	6F	86.10	84.10	91	60	56	66	12	0.946
66AT10/28-2	28ST10-66	28	6F	89.25	87.25	93	60	56	66	12	0.960
66AT10/30-2	30ST10-66	30	6F	95.65	93.65	97	60	56	66	12	1.169
66AT10/32-2	32ST10-66	32	6F	102.00	100.00	106	65	56	66	12	1.300
66AT10/36-2	36ST10-66	36	6F	114.75	112.75	119	70	56	66	16	1.637
66AT10/40-2	40ST10-66	40	6F	127.45	125.45	131	80	56	66	16	1.999
66AT10/44-0	44ST10-66	44	6	140.20	138.20	—	88	56	66	16	2.357
66AT10/48-0	48ST10-66	48	6	152.95	150.95	—	95	56	66	16	2.830
66AT10/60-0	60ST10-66	60	6	191.10	189.10	—	110	56	66	16	4.368

Note: Finished Bore & Keyway available on request.