

Metric Sprockets



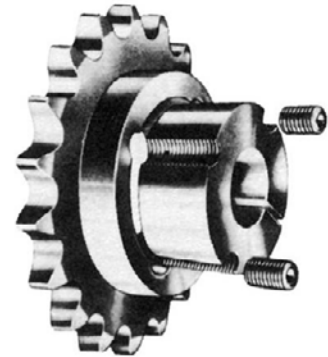
Taper Bushed Type TL

ISO 06B, DIN 8187 - ISO/R 606

Single, Double, Triple

Standard and Hardened Teeth

Material: Steel C45 E



Drawing Dimensions	Sprocket Size
	06B
h1	5.3
h2	15.4
h3	25.6
L	5.2

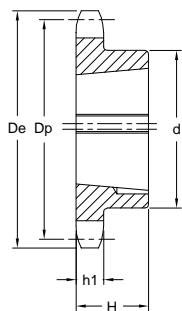
Part No: **06B-18HTL-1008**

06B = Chain Size

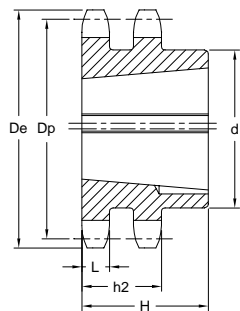
18 = Number of Teeth

H = Hardened Teeth

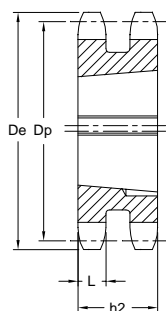
TL-1008 = TL Bushing Size



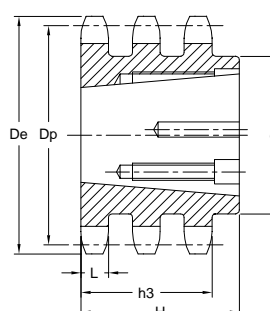
Type 1



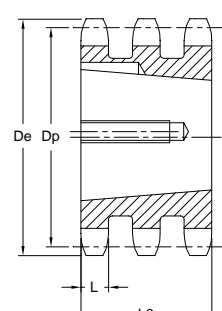
Type 2



Type 3



Type 4



Type 5

Dimensions in mm

Chain Size 3/8" x 7/32"	Teeth	D _e	D _p	Single				Double				Triple			
				Part No.	Type	d	H	Part No.	Type	d	H	Part No.	Type	d	H
06B	17	55.3	51.83	06B-17HTL-1008	1	45	22	06B-2-17TL-1008	2	41	22	06B-3-17TL-1008	5	—	25.6
	18	58.3	54.85	06B-18TL-1008	1	45	22	06B-2-18TL-1008	2	43	22	—	—	—	—
	19	61.3	57.87	06B-19HTL-1008	1	45	22	06B-2-19TL-1008	2	46	22	06B-3-19TL-1008	5	—	25.6
	20	64.3	60.89	06B-20TL-1008	1	46	22	06B-2-20TL-1008	2	48	22	—	—	—	—
	21	68.0	63.91	06B-21HTL-1008	1	46	22	06B-2-21TL-1008	2	49	22	06B-3-21TL-1008	5	—	25.6
	22	71.0	66.93	06B-22TL-1108	1	50	22	06B-2-22TL-1108	2	52	22	—	—	—	—
	23	73.5	69.95	06B-23HTL-1210	1	63	25	06B-2-23TL-1210	2	59	25	06B-3-23TL-1210	5	—	25.6
	24	77.0	72.97	06B-24TL-1210	1	63	25	06B-2-24TL-1210	2	61	25	—	—	—	—
	25	80.0	76.02	06B-25HTL-1210	1	63	25	06B-2-25TL-1210	2	64	25	06B-3-25TL-1210	5	—	25.6
	26	83.0	79.02	06B-26TL-1210	1	63	25	06B-2-26TL-1210	2	65	25	—	—	—	—
	27	86.0	82.02	06B-27HTL-1210	1	63	25	06B-2-27TL-1210	2	70	25	06B-3-27TL-1210	5	—	25.6
	28	89.0	85.07	06B-28TL-1210	1	63	25	06B-2-28TL-1210	2	70	25	—	—	—	—
	30	94.7	91.12	06B-30HTL-1210	1	63	25	06B-2-30TL-1210	2	75	25	06B-3-30TL-1615	4	79	38
	38	119.5	115.35	06B-38TL-1210	1	70	25	06B-2-38TL-1610	2	80	25	06B-3-38TL-1615	4	90	38
	45	140.7	136.55	06B-45TL-1210	1	70	25	06B-2-45TL-1610	2	80	25	—	—	—	—
	57	176.9	172.91	06B-57TL-1210	1	70	25	06B-2-57TL-1610	2	80	25	—	—	—	—
	76	234.9	230.49	06B-76TL-1210	1	70	25	06B-2-76TL-1610	2	80	25	—	—	—	—
95	292.5	288.08	06B-95TL-1210	1	80	25	06B-2-95TL-1610	2	90	25	—	—	—	—	
114	349.5	345.68	06B-114TL-1215	1	80	38	06B-2-114TL-1615	2	95	38	—	—	—	—	

Note: Shaded items with "H" in Part No. indicates Hardened Teeth.

Metric Sprockets

Standard, Hardened Teeth and Stainless Steel



ISO 06B Hub Type B

DIN 8187/ISO R 606

Chain Size: **06B-1 (3/8" x 7/32")**
 Pitch: 9.525 mm
 Roller Width: 5.72 mm
 Roller Dia.: 6.35 mm
 Spkt. Width: 5.3 mm (bf₁)
 Material: Standard Steel C45
 Material: Stainless Steel 304L



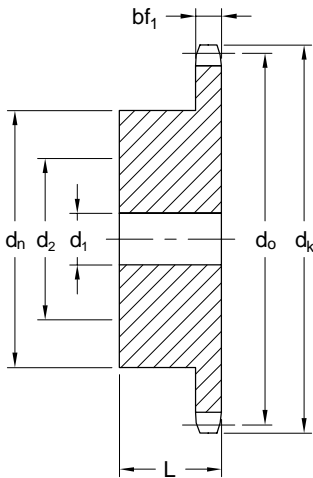
Standard



Hardened Teeth



Stainless Steel



Part No. Standard	Part No. Hardened Teeth	Part No. Stainless Steel	Teeth	d _o mm	d _k mm	d _n mm	d ₁ mm	d ₂ mm	L mm	Wt. kg
06B-8B	—	—	8	24.89	28.0	15	8	10	22	0.03
06B-9B	—	—	9	27.85	31.0	18	8	11	22	0.04
06B-10B	—	—	10	30.82	34.0	20	8	12	22	0.05
06B-11B	—	—	11	33.80	37.0	22	8	14	25	0.07
06B-12B	—	—	12	36.80	40.0	25	8	16	25	0.10
06B-13B	06B-13BH	06B-13BSS	13	39.80	43.0	28	10	18	25	0.13
06B-14B	06B-14BH	06B-14BSS	14	42.80	46.3	31	10	20	25	0.15
06B-15B	06B-15BH	06B-15BSS	15	45.81	49.3	34	10	22	25	0.18
06B-16B	06B-16BH	06B-16BSS	16	48.82	52.3	37	10	22	28	0.24
06B-17B	06B-17BH	06B-17BSS	17	51.83	55.3	40	10	25	28	0.28
06B-18B	06B-18BH	06B-18BSS	18	54.85	58.3	43	10	27	28	0.30
06B-19B	06B-19BH	06B-19BSS	19	57.87	61.3	45	10	28	28	0.35
06B-20B	06B-20BH	06B-20BSS	20	60.89	64.3	46	10	29	28	0.40
06B-21B	06B-21BH	06B-21BSS	21	63.91	68.0	48	12	30	28	0.44
06B-22B	06B-22BH	06B-22BSS	22	66.93	71.0	50	12	30	28	0.47
06B-23B	06B-23BH	06B-23BSS	23	69.95	73.5	52	12	32	28	0.50
06B-24B	06B-24BH	06B-24BSS	24	72.97	77.0	54	12	34	28	0.60
06B-25B	06B-25BH	06B-25BSS	25	76.00	80.0	57	12	36	28	0.60
06B-26B	—	—	26	79.02	83.0	60	12	38	28	0.65
06B-27B	—	—	27	82.04	86.0	60	12	38	28	0.69
06B-28B	—	—	28	85.07	89.0	60	12	38	28	0.70
06B-29B	—	—	29	88.09	92.0	60	12	38	28	0.80
06B-30B	06B-30BH	06B-30BSS	30	91.12	94.7	60	12	38	30	0.90
06B-31B	—	—	31	94.15	98.3	65	14	42	30	0.98
06B-32B	—	—	32	97.17	101.3	65	14	42	30	1.05
06B-33B	—	—	33	100.20	104.3	65	14	42	30	1.10
06B-34B	—	—	34	103.23	107.3	65	14	42	30	1.12
06B-35B	—	—	35	106.26	110.4	65	14	42	30	1.12
06B-36B	—	—	36	109.29	113.4	70	16	45	30	1.13
06B-37B	—	—	37	112.32	116.4	70	16	45	30	1.14
06B-38B	—	—	38	115.34	119.5	70	16	45	30	1.15
06B-39B	—	—	39	118.37	122.5	70	16	45	30	1.16
06B-40B	—	—	40	121.40	125.5	70	16	45	30	1.18

Note: All sizes can be Induction Hardened. Finish Bore and Key-way available on request. Other Stainless sizes available on request

Metric Sprockets

Standard, Hardened Teeth and Stainless Steel

ISO 08B Hub Type B

DIN 8187/ISO R 606

Chain Size: 08B-1 (1/2" x 5/16")
Pitch: 12.7 mm
Roller Width: 7.75 mm
Roller Dia.: 8.51 mm
Spkt. Width: 7.2 mm (bf₁)
Material: Standard Steel C45
Material: Stainless Steel 304L



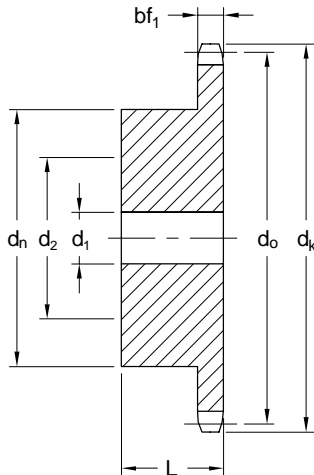
Standard



Hardened Teeth



Stainless Steel



Part No. Standard	Part No. Hardened Teeth	Part No. Stainless Steel	Teeth	d _o mm	d _k mm	d _n mm	d ₁ mm	d ₂ mm	L mm	Wt. kg
08B-8B	—	—	8	33.18	37.2	20	10	12	25	0.07
08B-9B	—	—	9	37.13	41.0	24	10	14	25	0.08
08B-10B	—	—	10	41.10	45.2	26	10	16	25	0.10
08B-11B	—	—	11	45.07	48.7	29	10	18	25	0.15
08B-12B	08B-12BH	08B-12BSS	12	49.07	53.0	33	10	21	28	0.20
08B-13B	08B-13BH	08B-13BSS	13	53.06	57.4	37	10	23	28	0.25
08B-14B	08B-14BH	08B-14BSS	14	57.07	61.8	41	10	26	28	0.32
08B-15B	08B-15BH	08B-15BSS	15	61.09	65.5	45	10	28	28	0.40
08B-16B	08B-16BH	08B-16BSS	16	65.10	69.5	50	12	31	28	0.45
08B-17B	08B-17BH	08B-17BSS	17	69.11	73.6	52	12	31	28	0.50
08B-18B	08B-18BH	08B-18BSS	18	73.14	77.8	56	12	35	28	0.59
08B-19B	08B-19BH	08B-19BSS	19	77.16	81.7	60	12	38	28	0.65
08B-20B	08B-20BH	08B-20BSS	20	81.19	85.8	64	12	40	28	0.75
08B-21B	08B-21BH	08B-21BSS	21	85.22	89.7	68	12	42	28	0.85
08B-22B	08B-22BH	08B-22BSS	22	89.24	93.8	70	12	44	28	0.93
08B-23B	08B-23BH	08B-23BSS	23	93.27	98.2	70	14	44	28	0.95
08B-24B	08B-24BH	08B-24BSS	24	97.29	101.8	70	14	44	28	0.97
08B-25B	08B-25BH	08B-25BSS	25	101.33	105.8	70	14	44	28	1.00
08B-26B	—	08B-26BSS	26	105.36	110.0	70	16	44	30	1.10
08B-27B	—	—	27	109.40	114.0	70	16	44	30	1.13
08B-28B	—	—	28	113.42	118.0	70	16	44	30	1.15
08B-29B	—	—	29	117.46	122.0	80	16	50	30	1.40
08B-30B	08B-30BH	08B-30BSS	30	121.50	126.1	80	16	50	30	1.45
08B-31B	—	—	31	125.54	130.2	90	16	56	30	1.51
08B-32B	—	—	32	129.56	134.3	90	16	56	30	1.80
08B-33B	—	—	33	133.60	138.4	90	16	56	30	1.85
08B-34B	—	—	34	137.64	142.6	90	16	56	30	1.90
08B-35B	—	—	35	141.68	146.7	90	16	56	30	1.95
08B-36B	—	—	36	145.72	151.0	90	20	56	35	2.20
08B-37B	—	—	37	149.76	154.6	90	20	56	35	2.25
08B-38B	—	—	38	153.80	158.6	90	20	56	35	2.30
08B-39B	—	—	39	157.83	162.7	90	20	56	35	2.35
08B-40B	—	—	40	161.87	166.8	90	20	56	35	2.45

Note: All sizes can be Induction Hardened. Finish Bore and Keyway available on request. Other Stainless sizes available on request.

Metric Sprockets

Standard, Hardened Teeth and Stainless Steel

ISO 10B Hub Type B

DIN 8187/ISO R 606

Chain Size: 10B-1 (5/8" x 3/8")
 Pitch: 15.875 mm
 Roller Width: 9.65 mm
 Roller Dia.: 10.16 mm
 Spkt. Width: 9.1 mm (bf₁)
 Material: Standard Steel C45
 Material: Stainless Steel 304L



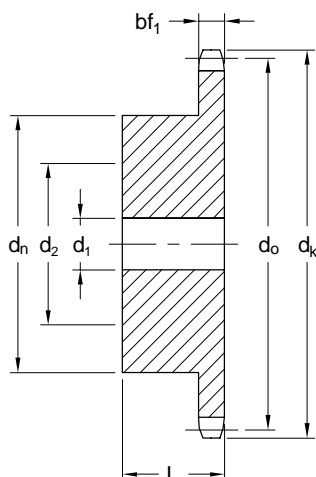
Standard



Hardened Teeth



Stainless Steel



Part No. Standard	Part No. Hardened Teeth	Part No. Stainless Steel	Teeth	d _o mm	d _k mm	d _n mm	d ₁ mm	d ₂ mm	L mm	Wt. kg
10B-8B	—	—	8	41.48	47.0	25	10	16	25	0.23
10B-9B	—	—	9	46.42	52.6	30	10	18	25	0.25
10B-10B	—	—	10	51.37	57.5	35	10	20	25	0.27
10B-11B	—	—	11	56.34	63.0	37	12	23	30	0.30
10B-12B	10B-12BH	10B-12BSS	12	61.34	68.0	42	12	26	30	0.35
10B-13B	10B-13BH	10B-13BSS	13	66.32	73.0	47	12	29	30	0.47
10B-14B	10B-14BH	10B-14BSS	14	71.34	78.0	52	12	32	30	0.55
10B-15B	10B-15BH	10B-15BSS	15	76.36	83.0	57	12	35	30	0.65
10B-16B	10B-16BH	10B-16BSS	16	81.37	88.0	60	12	38	30	0.77
10B-17B	10B-17BH	10B-17BSS	17	86.39	93.0	60	12	38	30	0.80
10B-18B	10B-18BH	10B-18BSS	18	91.42	98.3	70	14	44	30	1.03
10B-19B	10B-19BH	10B-19BSS	19	96.45	103.3	70	14	44	30	1.17
10B-20B	10B-20BH	10B-20BSS	20	101.49	108.4	75	14	47	30	1.22
10B-21B	10B-21BH	10B-21BSS	21	106.52	113.4	75	16	47	30	1.30
10B-22B	10B-22BH	10B-22BSS	22	111.55	118.0	80	16	50	30	1.41
10B-23B	10B-23BH	10B-23BSS	23	116.58	123.4	80	16	50	30	1.47
10B-24B	10B-24BH	10B-24BSS	24	121.62	128.3	80	16	50	30	1.53
10B-25B	10B-25BH	10B-25BSS	25	126.66	134.0	80	16	50	30	1.60
10B-26B	—	—	26	131.70	139.0	85	20	53	35	1.97
10B-27B	—	—	27	136.75	144.0	85	20	53	35	2.05
10B-28B	—	—	28	141.78	148.7	90	20	56	35	2.30
10B-29B	—	—	29	146.83	153.8	90	20	56	35	2.35
10B-30B	10B-30BH	10B-30BSS	30	151.87	158.8	90	20	56	35	2.43
10B-31B	—	—	31	156.92	163.9	95	20	60	35	2.63
10B-32B	—	—	32	161.95	168.9	95	20	60	35	2.75
10B-33B	—	—	33	167.00	174.5	95	20	60	35	2.85
10B-34B	—	—	34	172.05	179.0	95	20	60	35	3.00
10B-35B	—	—	35	177.10	184.1	95	20	60	35	3.05
10B-36B	—	—	36	182.15	189.1	100	20	63	35	3.15
10B-37B	—	—	37	187.20	194.2	100	20	63	35	3.40
10B-38B	—	—	38	192.24	199.2	100	20	63	35	3.48
10B-39B	—	—	39	197.29	204.2	100	20	63	35	3.60
10B-40B	—	—	40	202.34	209.3	100	20	63	35	3.71

Note: All sizes can be Induction Hardened. Finish Bore and Key-way available on request. Other Stainless sizes available on request.

Metric Sprockets



Standard, Hardened Teeth and Stainless Steel

ISO 12B Hub Type B

DIN 8187/ISO R 606

Chain Size: 12B-1 (3/4" x 7/16")
Pitch: 19.05 mm
Roller Width: 11.68 mm
Roller Dia.: 12.07 mm
Spkt. Width: 11.1 mm (bf₁)
Material: Standard Steel C45
Material: Stainless Steel 304L



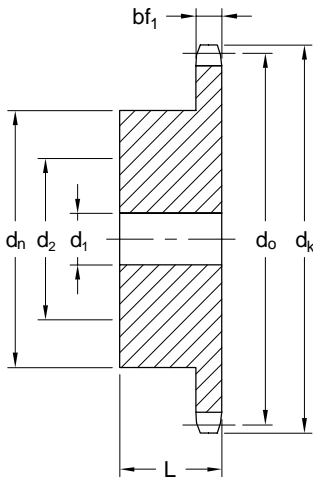
Standard



Hardened Teeth



Stainless Steel



Part No. Standard	Part No. Hardened Teeth	Part No. Stainless Steel	Teeth	d _o mm	d _k mm	d _n mm	d ₁ mm	d ₂ mm	L mm	Wt. kg
12B-8B	—	—	8	49.78	57.6	31	12	20	30	0.22
12B-9B	—	—	9	55.70	62.0	37	12	22	30	0.30
12B-10B	—	—	10	61.64	69.0	42	12	26	30	0.40
12B-11B	—	—	11	67.61	75.0	46	14	28	35	0.52
12B-12B	12B-12BH	12B-12BSS	12	73.60	81.5	52	14	32	35	0.67
12B-13B	12B-13BH	12B-13BSS	13	79.59	87.5	58	14	36	35	0.83
12B-14B	12B-14BH	12B-14BSS	14	85.61	93.6	64	14	41	35	1.00
12B-15B	12B-15BH	12B-15BSS	15	91.63	99.8	70	14	44	35	1.17
12B-16B	12B-16BH	12B-16BSS	16	97.65	105.5	75	16	47	35	1.36
12B-17B	12B-17BH	12B-17BSS	17	103.67	111.5	80	16	50	35	1.54
12B-18B	12B-18BH	12B-18BSS	18	109.71	118.0	80	16	50	35	1.65
12B-19B	12B-19BH	12B-19BSS	19	115.75	124.2	80	16	50	35	1.71
12B-20B	12B-20BH	12B-20BSS	20	121.78	129.7	80	16	50	35	1.82
12B-21B	12B-21BH	12B-21BSS	21	127.82	136.0	90	20	56	40	2.37
12B-22B	12B-22BH	12B-22BSS	22	133.86	141.8	90	20	56	40	2.45
12B-23B	12B-23BH	12B-23BSS	23	139.90	149.0	90	20	56	40	2.60
12B-24B	12B-24BH	12B-24BSS	24	145.94	153.9	90	20	56	40	2.73
12B-25B	12B-25BH	12B-25BSS	25	152.00	160.0	90	20	56	40	2.80
12B-26B	—	—	26	158.04	165.9	95	20	60	40	3.09
12B-27B	—	—	27	164.09	172.3	95	20	60	40	3.30
12B-28B	—	—	28	170.13	178.0	95	20	60	40	3.40
12B-29B	—	—	29	176.19	184.1	95	20	60	40	3.50
12B-30B	12B-30BH	12B-30BSS	30	182.25	190.5	95	20	60	40	3.65
12B-31B	—	—	31	188.31	196.3	100	20	63	40	3.85
12B-32B	—	—	32	194.35	203.3	100	20	63	40	4.00
12B-33B	—	—	33	200.40	209.3	100	20	63	40	4.10
12B-34B	—	—	34	206.46	214.6	100	20	63	40	4.35
12B-35B	—	—	35	212.52	221.0	100	20	63	40	4.60
12B-36B	—	—	36	218.58	226.8	100	20	63	40	4.85
12B-37B	—	—	37	224.64	232.9	100	20	63	40	4.95
12B-38B	—	—	38	230.69	239.0	100	20	63	40	5.10
12B-39B	—	—	39	236.75	245.1	100	20	63	40	5.27
12B-40B	—	—	40	242.81	251.3	100	20	63	40	5.50

Note: All sizes can be Induction Hardened. Finish Bore and Key-way available on request. Other Stainless sizes available on request.

Metric Sprockets

Standard, Hardened Teeth and Stainless Steel

ISO 16B Hub Type B

Din 8187/ISO R 606

Chain Size: 16B-1 (1" x 17.02 mm)
 Pitch: 25.4 mm
 Roller Width: 17.02 mm
 Roller Dia.: 15.88 mm
 Spkt. Width: 16.2 mm (bf₁)
 Material: Standard Steel C45
 Material: Stainless Steel 304L



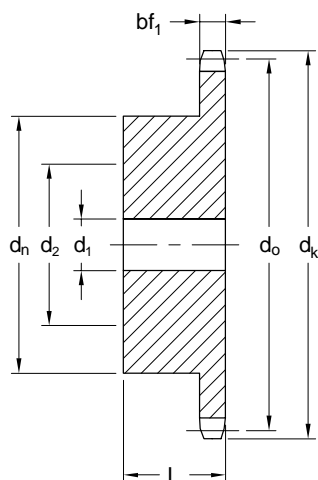
Standard



Hardened Teeth



Stainless Steel



Part No. Standard	Part No. Hardened Teeth	Part No. Stainless Steel	Teeth	d _o mm	d _k mm	d _n mm	d ₁ mm	d ₂ mm	L mm	Wt. kg
16B-8B	—	—	8	66.37	77.0	42	16	26	35	0.50
16B-9B	—	—	9	74.27	85.0	50	16	31	35	0.70
16B-10B	—	—	10	82.19	93.0	55	16	35	35	0.85
16B-11B	—	—	11	90.14	99.5	61	16	40	40	1.16
16B-12B	16B-12BH	16B-12BSS	12	98.14	109.0	69	16	43	40	1.50
16B-13B	16B-13BH	16B-13BSS	13	106.12	117.0	78	16	49	40	1.81
16B-14B	16B-14BH	16B-14BSS	14	114.15	125.0	84	16	52	40	2.10
16B-15B	16B-15BH	16B-15BSS	15	122.17	133.0	92	16	58	40	2.53
16B-16B	16B-16BH	16B-16BSS	16	130.20	141.0	100	20	63	45	3.20
16B-17B	16B-17BH	16B-17BSS	17	138.22	149.0	100	20	63	45	3.42
16B-18B	16B-18BH	16B-18BSS	18	146.28	157.0	100	20	63	45	3.62
16B-19B	16B-19BH	16B-19BSS	19	154.33	165.2	100	20	63	45	3.80
16B-20B	16B-20BH	16B-20BSS	20	162.38	173.2	100	20	63	45	4.15
16B-21B	16B-21BH	16B-21BSS	21	170.43	181.2	110	20	70	50	5.10
16B-22B	16B-22BH	16B-22BSS	22	178.48	189.3	110	20	70	50	5.40
16B-23B	16B-23BH	16B-23BSS	23	186.53	197.5	110	20	70	50	5.65
16B-24B	16B-24BH	16B-24BSS	24	194.59	205.5	110	20	70	50	5.90
16B-25B	16B-25BH	16B-25BSS	25	202.66	213.5	110	20	70	50	6.30
16B-26B	—	—	26	210.72	221.6	120	20	76	50	7.00
16B-27B	—	—	27	218.79	229.6	120	20	76	50	7.35
16B-28B	—	—	28	226.85	237.7	120	20	76	50	7.70
16B-29B	—	—	29	234.92	245.8	120	20	76	50	8.10
16B-30B	16B-30BH	16B-30BSS	30	243.00	254.0	120	25	76	50	8.40
16B-31B	—	—	31	251.08	262.0	120	25	76	50	9.50
16B-32B	—	—	32	259.13	270.0	120	25	76	50	9.09
16B-33B	—	—	33	267.21	278.5	120	25	76	50	9.50
16B-34B	—	—	34	275.28	287.0	120	25	76	50	11.40
16B-35B	—	—	35	283.36	296.2	120	25	76	50	11.80
16B-36B	—	—	36	291.44	304.6	120	25	76	50	12.10
16B-37B	—	—	37	299.51	312.6	120	25	76	50	12.40
16B-38B	—	—	38	307.59	320.7	120	25	76	50	13.15
16B-39B	—	—	39	315.67	328.8	120	25	76	50	13.80
16B-40B	—	—	40	323.73	336.9	120	25	76	50	14.05

Note: All sizes can be Induction Hardened. Finish Bore and Key-way available on request. Other Stainless sizes available on request.