

Metric Gear Racks for Spur Gears



Features:

Tolerance on Single Pitch +/- 20µm

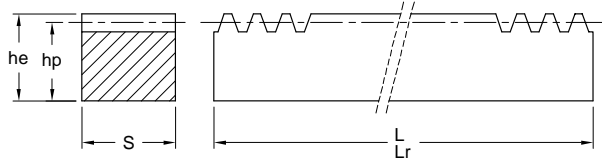
Tolerance on Sum of Pitches +/- 30µm on 500mm

The Quality Grade of the Teeth is from 8 to 9 at DIN 3962/63/67

20° Pressure Angle

Material C 45 E UNI EN 10083-1

Suitable for Continuous Mounting



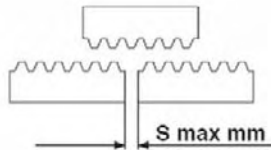
Racks

Module	hp mm	he x S mm	L							
			500 mm		1000 mm		2000 mm		3000 mm	
			Part No.	kg	Part No.	kg	Part No.	kg	Part No.	kg
1	14	15 x 15	M1 x 500	0.82	M1 x 1000	1.50	M1 x 2000	3.10	M1 x 3000	4.90
1.5	15.5	17 x 17	M1.5 x 500	1.00	M1.5 x 1000	2.00	M1.5 x 2000	4.00	M1.5 x 3000	6.10
2	18	20 x 20	M2 x 500	1.40	M2 x 1000	2.70	M2 x 2000	5.40	M2 x 3000	8.40
2.5	22.5	25 x 25	M2.5 x 500	2.10	M2.5 x 1000	4.30	M2.5 x 2000	8.60	M2.5 x 3000	11.90
3	27	30 x 30	M3 x 500	3.10	M3 x 1000	6.30	M3 x 2000	12.50	M3 x 3000	18.60
4 x 25	21	25 x 25	M4 x 25 x 500	1.80	M4 x 25 x 1000	3.65	M4 x 25 x 2000	7.30	M4 x 25 x 3000	10.90
4 x 30	26	30 x 30	M4 x 30 x 500	3.05	M4 x 30 x 1000	6.00	M4 x 30 x 2000	11.90	M4 x 30 x 3000	18.10
4 x 40	36	40 x 40	M4 x 40 x 500	5.50	M4 x 40 x 1000	11.10	M4 x 40 x 2000	22.00	M4 x 40 x 3000	31.30
5	45	50 x 50	M5 x 500	8.30	M5 x 1000	17.50	M5 x 2000	34.60	M5 x 3000	45.30
6	54	60 x 60	M6 x 500	12.65	M6 x 1000	25.00	M6 x 2000	51.00	—	—
8	72	80 x 80	M8 x 500	22.40	M8 x 1000	45.00	M8 x 2000	90.00	—	—

Part No. M2 x 1000

Where: M2 = Module Size

1000 = Length in mm



System Mounting

Top Fit Rack

For fit & Alignment

Technical Specification

Module	Pitch mm	S mm	L (Lr = Actual Length)							
			500 mm		1000 mm		2000 mm		3000 mm	
			Teeth	Lr	Teeth	Lr	Teeth	Lr	Teeth	Lr
1	3.1416	0.5	159	499.51	319	1002.17	637	2001.20	955	3000.23
1.5	4.7124	0.6	106	499.51	213	1003.74	425	2002.77	637	3001.80
2	6.2832	0.6	80	502.66	160	1005.31	319	2004.34	478	3003.37
2.5	7.8540	0.7	64	502.66	128	1005.31	255	2002.77	382	3000.23
3	9.4248	0.8	53	499.51	107	1008.45	213	2007.48	319	3006.51
4	12.5664	0.8	40	502.66	80	1005.31	160	2010.62	239	3003.37
5	15.7080	1.0	32	502.66	64	1005.31	128	2010.62	191	3000.23
6	18.8496	1.0	27	508.94	54	1017.88	107	2016.91	—	—
8	25.1328	1.0	20	502.66	40	1005.31	80	2010.62	—	—

Note: Stainless Rack available on request.