

Metric Rod Ends



GIS Type

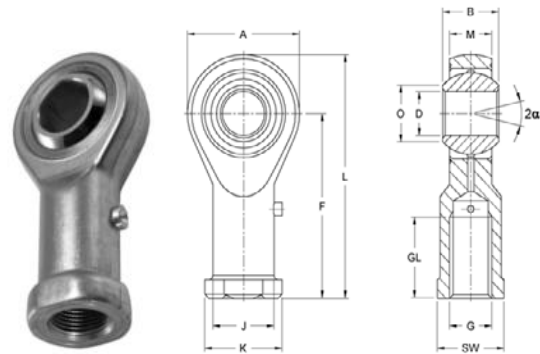
Heavy Duty, Zinc Plated
Grease Fitting for Re-Lube
Right & Left Hand - Internal Threads
Suited for High Speed Applications

Housing: Sizes 2-12 turned from free-cutting steel to 9SMnPb28K, 12L13
 Sizes 14-40 are forged from heat-treated steel to C22, M1023
 Size 50 is turned from heat-treated steel to C45, Aisi 1045

Insert: Special high strength bronze to CuSn8

Ball: Bearing steel to 100Cr6 Aisi 52100, hardened, ground, polished

This series is also available sealed and with CETOP dimensions for Hydraulic Cylinders



| Right Hand Part No. | Left Hand Part No. | Size D | Dimensions (mm) | | | | | | | | | | | Static Load C ₀ kN | Dynamic Load C kN | Max Speed RPM | Wt. g |
|---------------------|--------------------|--------|-----------------|-------|----|-----|-------|------|------|------|------|------------|----|-------------------------------|-------------------|---------------|-------|
| | | | B | M | A | F | L | K | J | O | SW | G | GL | | | | |
| GIS 2* | GILS 2* | 2 | 4.5 | 3.60 | 9 | 16 | 20.5 | 4.5 | 3.8 | 2.6 | 4.0 | M2 x 0.4 | 7 | 3.0 | 1.1 | — | 3 |
| GIS 3 | GILS 3 | 3 | 6.0 | 4.50 | 14 | 21 | 27.0 | 6.5 | 5.0 | 5.1 | 5.5 | M3 x 0.5 | 10 | 4.1 | 1.8 | — | 6 |
| GIS 5 | GILS 5 | 5 | 8.0 | 6.00 | 18 | 27 | 36.0 | 11.0 | 9.0 | 7.7 | 9.0 | M5 x 0.8 | 10 | 8.0 | 3.3 | — | 18 |
| GIS 6 | GILS 6 | 6 | 9.0 | 6.75 | 20 | 30 | 40.0 | 13.0 | 10.0 | 8.9 | 11.0 | M6 x 1 | 12 | 8.9 | 4.3 | 1500 | 27 |
| GIS 8 | GILS 8 | 8 | 12.0 | 9.00 | 24 | 36 | 48.0 | 16.0 | 12.5 | 10.4 | 13.0 | M8 x 1.25 | 16 | 14.1 | 7.1 | 1200 | 46 |
| GIS 10 | GILS 10 | 10 | 14.0 | 10.50 | 28 | 43 | 57.0 | 19.0 | 15.0 | 12.9 | 17.0 | M10 x 1.5 | 20 | 19.3 | 10.0 | 1000 | 76 |
| GIS 12 | GILS 12 | 12 | 16.0 | 12.00 | 32 | 50 | 66.0 | 22.0 | 17.5 | 15.4 | 19.0 | M12 x 1.75 | 22 | 23.5 | 13.5 | 860 | 115 |
| GIS 14 | GILS 14 | 14 | 19.0 | 13.50 | 36 | 57 | 75.0 | 25.0 | 20.0 | 16.8 | 22.0 | M14 x 2 | 25 | 21.0 | 17.0 | 750 | 170 |
| GIS 16 | GILS 16 | 16 | 21.0 | 15.00 | 42 | 64 | 85.0 | 27.0 | 22.0 | 19.3 | 22.0 | M16 x 2 | 28 | 32.0 | 21.5 | 660 | 230 |
| GIS 18 | GILS 18 | 18 | 23.0 | 16.50 | 46 | 71 | 94.0 | 31.0 | 25.0 | 21.8 | 27.0 | M18 x 1.5 | 32 | 38.5 | 26.0 | 600 | 320 |
| GIS 20 | GILS 20 | 20 | 25.0 | 18.00 | 50 | 77 | 102.0 | 34.0 | 27.5 | 24.3 | 32.0 | M20 x 1.5 | 33 | 44.0 | 31.5 | 540 | 415 |
| GIS 22 | GILS 22 | 22 | 28.0 | 20.00 | 54 | 84 | 111.0 | 37.0 | 30.0 | 25.8 | 32.0 | M22 x 1.5 | 37 | 53.0 | 38.0 | 500 | 540 |
| GIS 25 | GILS 25 | 25 | 31.0 | 22.00 | 60 | 94 | 124.0 | 42.0 | 33.5 | 29.6 | 36.0 | M24 x 2 | 42 | 62.0 | 47.0 | 440 | 750 |
| GIS 30 | GILS 30 | 30 | 37.0 | 25.0 | 70 | 110 | 145.0 | 51.0 | 40.0 | 34.8 | 41.0 | M30 x 2 | 51 | 82.0 | 64.0 | 370 | 1130 |
| GIS 35 | GILS 35 | 35 | 43.0 | 28.0 | 80 | 125 | 165.0 | 58.0 | 46.0 | 37.7 | 50.0 | M36 x 2 | 56 | 101.0 | 80.0 | 330 | 1600 |
| GIS 40 | GILS 40 | 40 | 49.0 | 35.0 | 90 | 142 | 187.0 | 69.0 | 57.0 | 44.2 | 60.0 | M42 x 2 | 60 | 124.0 | 116.0 | 290 | 2770 |

Note: * Without Grease Fitting. Size 50 available on request.

GAS Type

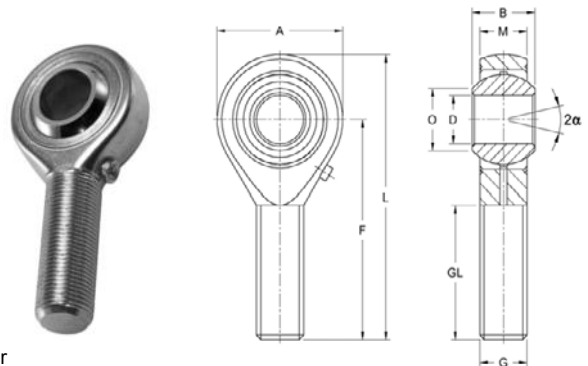
Heavy Duty, Zinc Plated
Grease Fitting for Re-Lube
Right & Left Hand - External Threads
Suited for High Speed Applications

Housing: Sizes 2-12 turned from free-cutting steel to 9SMnPb28K, 12L13
 Sizes 14-40 are forged from heat-treated steel to C22, M1023
 Size 50 is turned from heat-treated steel to C45, Aisi 1045

Insert: Special high strength bronze to CuSn8

Ball: Bearing steel to 100Cr6, Aisi 52100, hardened, ground, polished

This series is also available sealed and with CETOP dimensions for Hydraulic Cylinder



| Right Hand Part No. | Left Hand Part No. | Size D | Dimensions (mm) | | | | | | | | Static Load C ₀ kN | Dynamic Load C kN | Max Speed RPM | Wt. g |
|---------------------|--------------------|--------|-----------------|-------|----|-----|-------|------|------------|----|-------------------------------|-------------------|---------------|-------|
| | | | B | M | A | F | L | O | G | GL | | | | |
| GAS 2* | GALS 2* | 2 | 4.5 | 3.60 | 9 | 20 | 24.5 | 2.6 | M2 x 0.4 | 12 | 0.6 | 1.1 | — | 3 |
| GAS 3* | GALS 3* | 3 | 6.0 | 4.50 | 14 | 26 | 33.0 | 5.1 | M3 x 0.5 | 15 | 1.5 | 1.8 | — | 6 |
| GAS 5* | GALS 5* | 5 | 8.0 | 6.00 | 18 | 33 | 42.0 | 7.7 | M5 x 0.8 | 20 | 4.3 | 3.3 | — | 13 |
| GAS 6 | GALS 6 | 6 | 9.0 | 6.75 | 20 | 36 | 46.0 | 8.9 | M6 x 1 | 22 | 6.0 | 4.3 | 1500 | 20 |
| GAS 8 | GALS 8 | 8 | 12.0 | 9.00 | 24 | 42 | 54.0 | 10.4 | M8 x 1.25 | 25 | 11.0 | 7.0 | 1200 | 33 |
| GAS 10 | GALS 10 | 10 | 14.0 | 10.50 | 28 | 48 | 62.0 | 12.9 | M10 x 1.5 | 29 | 17.4 | 10.0 | 1000 | 56 |
| GAS 12 | GALS 12 | 12 | 16.0 | 12.00 | 32 | 54 | 70.0 | 15.4 | M12 x 1.75 | 33 | 23.5 | 13.5 | 860 | 87 |
| GAS 14 | GALS 14 | 14 | 19.0 | 13.50 | 36 | 60 | 78.0 | 16.8 | M14 x 2 | 36 | 21.0 | 17.0 | 750 | 129 |
| GAS 16 | GALS 16 | 16 | 21.0 | 15.00 | 42 | 66 | 87.0 | 19.3 | M16 x 2 | 40 | 32.0 | 21.5 | 660 | 189 |
| GAS 18 | GALS 18 | 18 | 23.0 | 16.50 | 46 | 72 | 95.0 | 21.8 | M18 x 1.5 | 44 | 38.5 | 26.0 | 600 | 267 |
| GAS 20 | GALS 20 | 20 | 25.0 | 18.00 | 50 | 78 | 103.0 | 24.3 | M20 x 1.5 | 47 | 44.0 | 31.5 | 540 | 348 |
| GAS 22 | GALS 22 | 22 | 28.0 | 20.00 | 54 | 84 | 111.0 | 25.8 | M22 x 1.5 | 51 | 53.0 | 38.0 | 500 | 443 |
| GAS 25 | GALS 25 | 25 | 31.0 | 22.00 | 60 | 94 | 124.0 | 29.6 | M24 x 2 | 58 | 62.0 | 47.0 | 440 | 600 |
| GAS 30 | GALS 30 | 30 | 37.0 | 25.00 | 70 | 110 | 145.0 | 34.8 | M30 x 2 | 71 | 82.0 | 64.0 | 370 | 1030 |
| GAS 35 | GALS 35 | 35 | 43.0 | 28.00 | 80 | 125 | 165.0 | 37.7 | M36 x 2 | 73 | 101.0 | 80.0 | 330 | 1600 |
| GAS 40 | GALS 40 | 40 | 49.0 | 35.00 | 90 | 142 | 187.0 | 44.2 | M42 x 2 | 78 | 124.0 | 116.0 | 290 | 2550 |

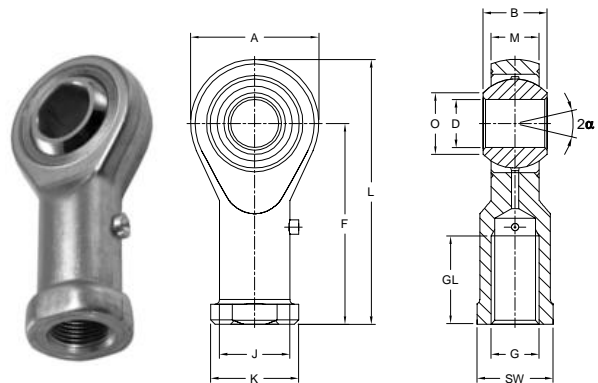
Note: * Without Grease Fitting. Size 50 available on request.

Metric Rod Ends

GIXS Type

- Extra Heavy Duty, Zinc Plated
- Grease Fitting for Re-Lube
- Right & Left Hand- Internal Threads
- Suited for High Pressure and Tension Loads

Housing: Heat-treated 42CrMo4 steel, Aisi 4140, forged
Insert: Special high strength bronze to CuSn8
Ball: Bearing steel 100Cr6 (Aisi 52100), hardened, ground, polished
 This series is also available sealed and with CETOP
 (European Fluid Power Committee) dimensions for Hydraulic Cylinders

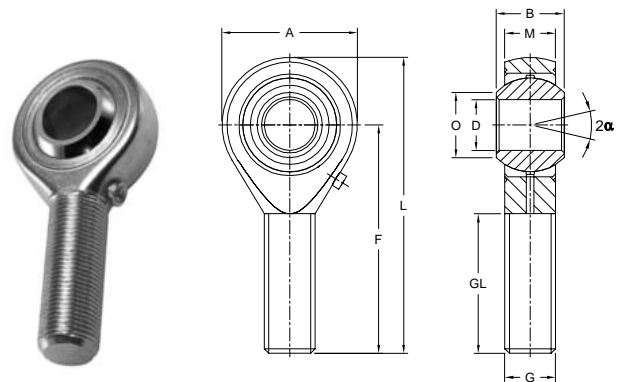


| Right Hand Part No. | Left Hand Part No. | Size D | Dimensions (mm) | | | | | | | | | | | Static Load C ₀ kN | Dynamic Load C kN | Max Speed RPM | Wt. g |
|---------------------|--------------------|--------|-----------------|-------|----|-----|-----|----|------|------|----|------------|----|-------------------------------|-------------------|---------------|-------|
| | | | B | M | A | F | L | K | J | O | SW | G | GL | | | | |
| GIXS 6 | GILXS 6 | 6 | 9 | 6.75 | 20 | 30 | 40 | 13 | 10.0 | 8.9 | 11 | M6 x 1 | 12 | 16.7 | 4.3 | 1500 | 27 |
| GIXS 8 | GILXS 8 | 8 | 12 | 9.00 | 24 | 36 | 48 | 16 | 12.5 | 10.4 | 13 | M8 x 1.25 | 16 | 25.5 | 7.1 | 1200 | 46 |
| GIXS 10 | GILXS 10 | 10 | 14 | 10.50 | 28 | 43 | 57 | 19 | 15.0 | 12.9 | 17 | M10 x 1.5 | 20 | 34.8 | 10.0 | 1000 | 76 |
| GIXS 12 | GILXS 12 | 12 | 16 | 12.00 | 32 | 50 | 66 | 22 | 17.5 | 15.4 | 19 | M12 x 1.75 | 22 | 42.0 | 13.3 | 860 | 115 |
| GIXS 14 | GILXS 14 | 14 | 19 | 13.50 | 36 | 57 | 75 | 25 | 20.0 | 16.8 | 22 | M14 x 2 | 25 | 57.0 | 17.0 | 750 | 170 |
| GIXS 16 | GILXS 16 | 16 | 21 | 15.00 | 42 | 64 | 85 | 27 | 22.0 | 19.3 | 22 | M16 x 2 | 28 | 67.5 | 21.5 | 660 | 230 |
| GIXS 18 | GILXS 18 | 18 | 23 | 16.50 | 46 | 71 | 94 | 31 | 25.0 | 21.8 | 27 | M18 x 1.5 | 32 | 81.5 | 26.0 | 600 | 320 |
| GIXS 20 | GILXS 20 | 20 | 25 | 18.00 | 50 | 77 | 102 | 34 | 27.5 | 24.3 | 32 | M20 x 1.5 | 33 | 93.5 | 31.5 | 540 | 415 |
| GIXS 22 | GILXS 22 | 22 | 28 | 20.00 | 54 | 84 | 111 | 37 | 30.0 | 25.8 | 32 | M22 x 1.5 | 37 | 114.0 | 38.0 | 500 | 540 |
| GIXS 25 | GILXS 25 | 25 | 31 | 22.00 | 60 | 94 | 124 | 42 | 33.5 | 29.6 | 36 | M24 x 2 | 42 | 135.0 | 47.0 | 440 | 750 |
| GIXS 30 | GILXS 30 | 30 | 37 | 25.00 | 70 | 110 | 145 | 51 | 40.0 | 34.8 | 41 | M30 x 2 | 51 | 184.0 | 64.0 | 370 | 1130 |

GAXS Type

- Extra Heavy Duty, Zinc Plated
- Grease Fitting for Re-Lube
- Right & Left Hand-External Threads
- Suited for High Pressure and Tension Loads

Housing: Heat-treated 42CrMo4 steel, Aisi 4140, forged
Insert: Special high strength bronze to CuSn8
Ball: Bearing steel 100Cr6 (Aisi 52100), hardened, ground, polished
 This series is also available sealed and with CETOP
 (European Fluid Power Committee) dimensions for Hydraulic Cylinders



| Right Hand Part No. | Left Hand Part No. | Size D | Dimensions (mm) | | | | | | | | Static Load C ₀ kN | Dynamic Load C kN | Max Speed RPM | Wt. g |
|---------------------|--------------------|--------|-----------------|-------|----|-----|-----|------|------------|----|-------------------------------|-------------------|---------------|-------|
| | | | B | M | A | F | L | O | G | GL | | | | |
| GAXS 6 | GALXS 6 | 6 | 9 | 6.75 | 20 | 36 | 46 | 8.9 | M6 x 1 | 22 | 9.8 | 4.3 | 1500 | 20 |
| GAXS 8 | GALXS 8 | 8 | 12 | 9.00 | 24 | 42 | 54 | 10.4 | M8 x 1.25 | 25 | 19.5 | 7.1 | 1200 | 33 |
| GAXS 10 | GALXS 10 | 10 | 14 | 10.50 | 28 | 48 | 62 | 12.9 | M10 x 1.5 | 29 | 31.4 | 10.0 | 1000 | 56 |
| GAXS 12 | GALXS 12 | 12 | 16 | 12.00 | 32 | 54 | 70 | 15.4 | M12 x 1.75 | 33 | 42.0 | 13.5 | 860 | 87 |
| GAXS 14 | GALXS 14 | 14 | 19 | 13.50 | 36 | 60 | 78 | 16.8 | M14 x 2 | 36 | 57.0 | 17.0 | 750 | 129 |
| GAXS 16 | GALXS 16 | 16 | 21 | 15.00 | 42 | 66 | 87 | 19.3 | M16 x 2 | 40 | 67.5 | 21.5 | 660 | 189 |
| GAXS 18 | GALXS 18 | 18 | 23 | 16.50 | 46 | 72 | 95 | 21.8 | M18 x 1.5 | 44 | 81.5 | 26.0 | 600 | 267 |
| GAXS 20 | GALXS 20 | 20 | 25 | 18.00 | 50 | 78 | 103 | 24.3 | M20 x 1.5 | 47 | 93.5 | 31.5 | 540 | 348 |
| GAXS 22 | GALXS 22 | 22 | 28 | 20.00 | 54 | 84 | 111 | 25.8 | M22 x 1.5 | 51 | 114.0 | 38.0 | 500 | 443 |
| GAXS 25 | GALXS 25 | 25 | 31 | 22.00 | 60 | 94 | 124 | 29.6 | M24 x 2 | 57 | 135.0 | 47.0 | 440 | 600 |
| GAXS 30 | GALXS 30 | 30 | 37 | 25.00 | 70 | 110 | 145 | 34.8 | M30 x 2 | 71 | 184.0 | 64.0 | 370 | 1030 |