

Metric Sprockets



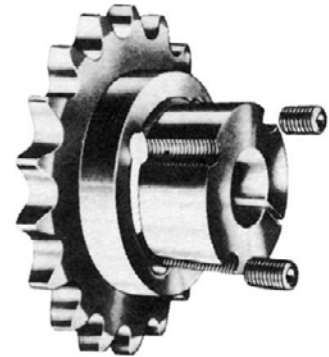
Taper Bushed Type TL

ISO 06B, DIN 8187 - ISO/R 606

Single, Double, Triple

Standard and Hardened Teeth

Material: Steel C45 E



Drawing Dimensions	Sprocket Size
	06B
h1	5.3
h2	15.4
h3	25.6
L	5.2

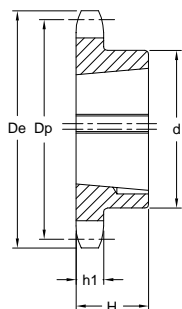
Part No: **06B-18HTL-1008**

06B = Chain Size

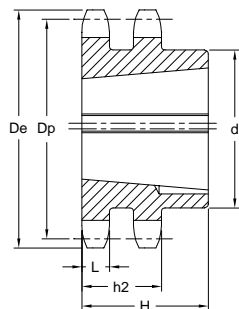
18 = Number of Teeth

H = Hardened Teeth

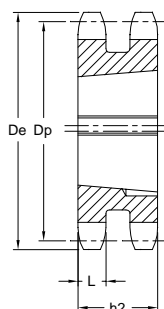
TL-1008 = TL Bushing Size



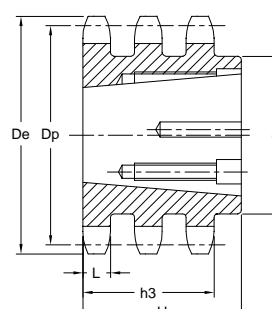
Type 1



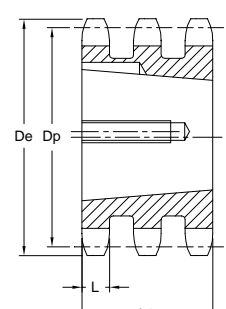
Type 2



Type 3



Type 4



Type 5

Dimensions in mm

Chain Size 3/8" x 7/32"	Teeth	De	Dp	Single				Double				Triple			
				Part No.	Type	d	H	Part No.	Type	d	H	Part No.	Type	d	H
06B	17	55.3	51.83	06B-17HTL-1008	1	45	22	06B-2-17TL-1008	2	41	22	06B-3-17TL-1008	5	—	25.6
	18	58.3	54.85	06B-18TL-1008	1	45	22	06B-2-18TL-1008	2	43	22	—	—	—	—
	19	61.3	57.87	06B-19HTL-1008	1	45	22	06B-2-19TL-1008	2	46	22	06B-3-19TL-1008	5	—	25.6
	20	64.3	60.89	06B-20TL-1008	1	46	22	06B-2-20TL-1008	2	48	22	—	—	—	—
	21	68.0	63.91	06B-21HTL-1008	1	46	22	06B-2-21TL-1008	2	49	22	06B-3-21TL-1008	5	—	25.6
	22	71.0	66.93	06B-22TL-1108	1	50	22	06B-2-22TL-1108	2	52	22	—	—	—	—
	23	73.5	69.95	06B-23HTL-1210	1	63	25	06B-2-23TL-1210	2	59	25	06B-3-23TL-1210	5	—	25.6
	24	77.0	72.97	06B-24TL-1210	1	63	25	06B-2-24TL-1210	2	61	25	—	—	—	—
	25	80.0	76.02	06B-25HTL-1210	1	63	25	06B-2-25TL-1210	2	64	25	06B-3-25TL-1210	5	—	25.6
	26	83.0	79.02	06B-26TL-1210	1	63	25	06B-2-26TL-1210	2	65	25	—	—	—	—
	27	86.0	82.02	06B-27HTL-1210	1	63	25	06B-2-27TL-1210	2	70	25	06B-3-27TL-1210	5	—	25.6
	28	89.0	85.07	06B-28TL-1210	1	63	25	06B-2-28TL-1210	2	70	25	—	—	—	—
	30	94.7	91.12	06B-30HTL-1210	1	63	25	06B-2-30TL-1210	2	75	25	06B-3-30TL-1615	4	79	38
	38	119.5	115.35	06B-38TL-1210	1	70	25	06B-2-38TL-1610	2	80	25	06B-3-38TL-1615	4	90	38
	45	140.7	136.55	06B-45TL-1210	1	70	25	06B-2-45TL-1610	2	80	25	—	—	—	—
	57	176.9	172.91	06B-57TL-1210	1	70	25	06B-2-57TL-1610	2	80	25	—	—	—	—
	76	234.9	230.49	06B-76TL-1210	1	70	25	06B-2-76TL-1610	2	80	25	—	—	—	—
	95	292.5	288.08	06B-95TL-1210	1	80	25	06B-2-95TL-1610	2	90	25	—	—	—	—
114	349.5	345.68	06B-114TL-1215	1	80	38	06B-2-114TL-1615	2	95	38	—	—	—	—	

Note: Shaded items with "H" in Part No. indicates Hardened Teeth.

Metric Sprockets



Taper Bushed Type TL

ISO 08B, DIN 8187 - ISO/R 606

Single, Double, Triple

Standard and Hardened Teeth

Material: Steel C45 E



Drawing Dimensions	Sprocket Size
	08B
h1	7.2
h2	21
h3	34.9
L	7

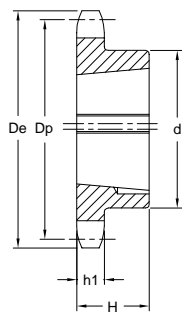
Part No: 08B-20HTL-1610

08B = Chain Size

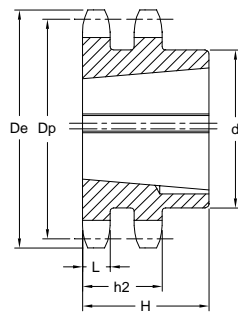
20 = Number of Teeth

H = Hardened Teeth

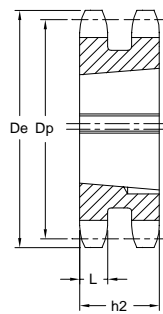
TL-1610 = TL Bushing Size



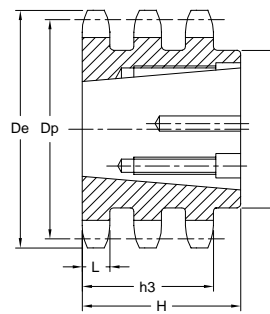
Type 1



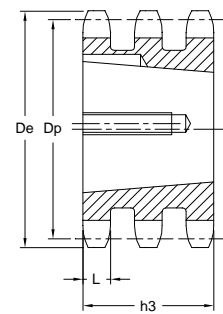
Type 2



Type 3



Type 4



Type 5

Dimensions in mm

Chain Size 1/2" x 5/16"	Teeth	D _e	D _p	Single				Double				Triple			
				Part No.	Type	d	H	Part No.	Type	d	H	Part No.	Type	d	H
08B	15	65.5	61.90	08B-15HTL-1008	1	45	22	08B-2-15TL-1008	2	46	22	08B-3-15TL-1008	5	-	34.9
	16	69.5	65.10	08B-16TL-1108	1	50	22	08B-2-16TL-1108	2	50	22	-	-	-	-
	17	73.6	69.11	08B-17HTL-1210	1	60	25	08B-2-17TL-1210	2	56	25	08B-3-17TL-1210	5	-	34.9
	18	77.8	73.14	08B-18TL-1210	1	60	25	08B-2-18TL-1210	2	60	25	-	-	-	-
	19	81.7	77.16	08B-19HTL-1210	1	63	25	08B-2-19TL-1210	2	62	25	08B-3-19TL-1210	5	-	34.9
	20	85.8	81.19	08B-20TL-1610	1	71	25	08B-2-20TL-1610	2	66	25	-	-	-	-
	21	89.7	85.22	08B-21HTL-1610	1	71	25	08B-2-21TL-1610	2	70	25	08B-3-21TL-1610	5	-	34.9
	22	93.8	89.24	08B-22TL-1610	1	71	25	08B-2-22TL-1610	2	76	25	-	-	-	-
	23	98.2	93.27	08B-23HTL-1610	1	76	25	08B-2-23TL-1610	2	79	25	08B-3-23TL-1610	5	-	34.9
	24	101.8	97.29	08B-24TL-1610	1	76	25	08B-2-24TL-1610	2	84	25	-	-	-	-
	25	105.8	101.33	08B-25HTL-1610	1	76	25	08B-2-25TL-2012	2	87	32	08B-3-25TL-2012	5	-	34.9
	26	110.0	105.36	08B-26TL-1610	1	76	25	08B-2-26TL-2012	2	87	32	-	-	-	-
	27	114.4	109.40	08B-27HTL-1610	1	76	25	08B-2-27TL-2012	2	87	32	08B-3-27TL-2012	5	-	34.9
	28	118.0	113.42	08B-28TL-2012	1	90	32	08B-2-28TL-2012	2	87	32	-	-	-	-
	30	126.1	121.50	08B-30HTL-2012	1	90	32	08B-2-30TL-2012	2	87	32	08B-3-30TL-2012	5	-	34.9
	38	158.6	153.80	08B-38TL-2012	1	90	32	08B-2-38TL-2012	2	100	32	08B-3-38TL-2012	5	-	34.9
	45	188.0	182.07	08B-45TL-2012	1	100	32	08B-2-45TL-2012	2	100	32	-	-	-	-
	57	236.4	230.54	08B-57TL-2012	1	100	32	08B-2-57TL-2012	2	100	32	-	-	-	-
	76	313.3	307.33	08B-76TL-2012	1	100	32	08B-2-76TL-2012	2	100	32	-	-	-	-
95	390.1	304.11	08B-95TL-2012	1	100	32	08B-2-95TL-2012	2	100	32	-	-	-	-	
114	466.9	460.90	08B-114TL-2517	1	110	45	08B-2-114TL-2517	2	110	45	-	-	-	-	

Note: Shaded items with "H" in Part No. indicates Hardened Teeth.

Metric Sprockets



Taper Bushed Type TL

ISO 10B, DIN 8187 - ISO/R 606

Single, Double, Triple

Standard and Hardened Teeth

Material: Steel C45 E

Drawing Dimensions	Sprocket Size
	10B
h1	9.1
h2	25.5
h3	42.1
L	9

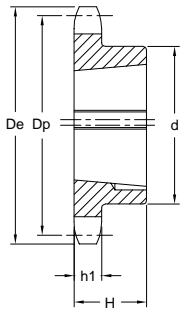
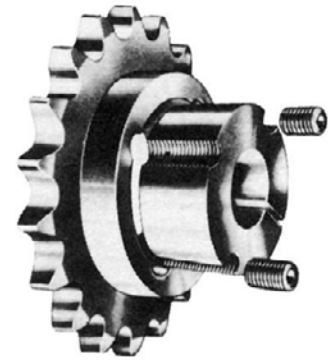
Part No: 10B-21HTL-1610

10B = Chain Size

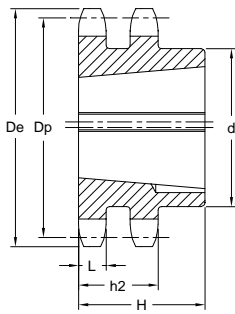
21 = Number of Teeth

H = Hardened Teeth

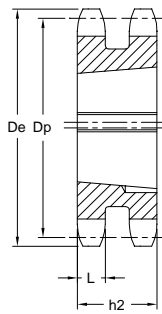
TL-1610 = TL Bushing Size



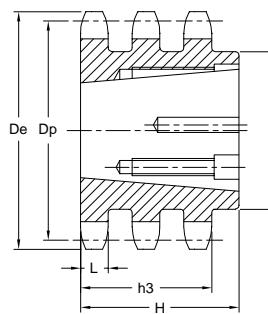
Type 1



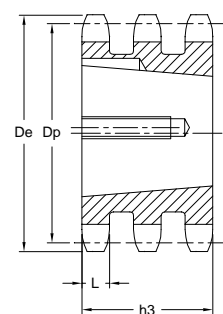
Type 2



Type 3



Type 4



Type 5

Dimensions in mm

Chain Size 5/8" x 3/8"	Teeth	D _e	D _p	Single				Double				Triple					
				Part No.	Type	d	H	Part No.	Type	d	H	Part No.	Type	d	H		
10B	13	73.0	66.32	10B-13HTL-1008	1	47	22	10B-2-13TL-1210	3	—	25.5	—	—	—	—	—	
	14	78.0	71.34	10B-14TL-1108	1	52	22	—	—	—	—	—	—	—	—	—	
	15	83.0	76.36	10B-15HTL-1210	1	60	25	10B-2-15TL-1210	3	—	25.5	10B-3-15TL-1210	5	—	42.1	—	
	16	88.0	81.37	10B-16TL-1610	1	70	25	—	—	—	—	—	—	—	—	—	
	17	93.0	86.36	10B-17HTL-1610	1	71	25	10B-2-17TL-1610	3	—	25.5	10B-3-17TL-1210	5	—	42.1	—	
	18	98.3	91.42	10B-18TL-1610	1	75	25	—	—	—	—	—	—	—	—	—	—
	19	103.3	96.45	10B-19HTL-1610	1	75	25	10B-2-19TL-1610	3	—	25.5	10B-3-19TL-1615	5	—	42.1	—	
	20	108.4	101.49	10B-20TL-1610	1	75	25	10B-2-20TL-1610	3	—	25.5	—	—	—	—	—	—
	21	113.4	106.52	10B-21HTL-1610	1	76	25	10B-2-21TL-1610	3	—	25.5	10B-3-21TL-1615	5	—	42.1	—	
	22	118.0	111.25	10B-22TL-1610	1	76	25	10B-2-22TL-1610	3	—	25.5	—	—	—	—	—	—
	23	123.4	116.58	10B-23HTL-1610	1	76	25	10B-2-23TL-1610	3	—	25.5	10B-3-23TL-2012	5	—	42.1	—	
	24	128.3	121.62	10B-24TL-2012	1	90	32	—	—	—	—	—	—	—	—	—	—
	25	134.0	126.66	10B-25HTL-2012	1	90	32	10B-2-25TL-2012	2	90	32.0	10B-3-25TL-2517	4	105	45.0	—	
	26	139.0	131.70	10B-26TL-2012	1	90	32	—	—	—	—	—	—	—	—	—	—
	27	144.0	136.75	10B-27HTL-2012	1	90	32	10B-2-27TL-2012	2	90	32.0	10B-3-27TL-2517	4	110	45.0	—	
	28	148.7	141.78	10B-28TL-2012	1	90	32	—	—	—	—	—	—	—	—	—	—
	30	158.8	151.87	10B-30HTL-2012	1	90	32	10B-2-30TL-2012	2	90	32.0	10B-3-30TL-2517	4	120	45.0	—	
	38	199.2	192.24	10B-38TL-2012	1	100	32	10B-2-38TL-2517	2	108	45.0	—	—	—	—	—	—
	45	235.0	227.58	10B-45TL-2012	1	100	32	—	—	—	—	—	—	—	—	—	—
	57	296.0	288.18	10B-57TL-2012	1	100	32	—	—	—	—	—	—	—	—	—	—
76	392.1	384.16	10B-76TL-2012	1	100	32	—	—	—	—	—	—	—	—	—	—	
95	488.5	480.14	10B-95TL-2517	1	110	45	—	—	—	—	—	—	—	—	—	—	
114	584.1	576.13	10B-114TL-2517	1	110	45	—	—	—	—	—	—	—	—	—	—	

Note: Shaded items with "H" in Part No. indicates Hardened Teeth.

Metric Sprockets



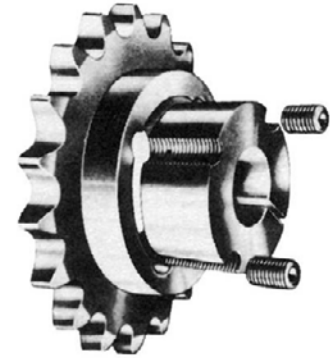
Taper Lock Bushed Type TL

ISO 12B, DIN 8187 - ISO/R 606

Single, Double, Triple

Standard and Hardened Teeth

Material: Steel C45 E



Drawing Dimensions	Sprocket Sizes
	12B
h1	11.1
h2	30.3
h3	49.8
L	10.8

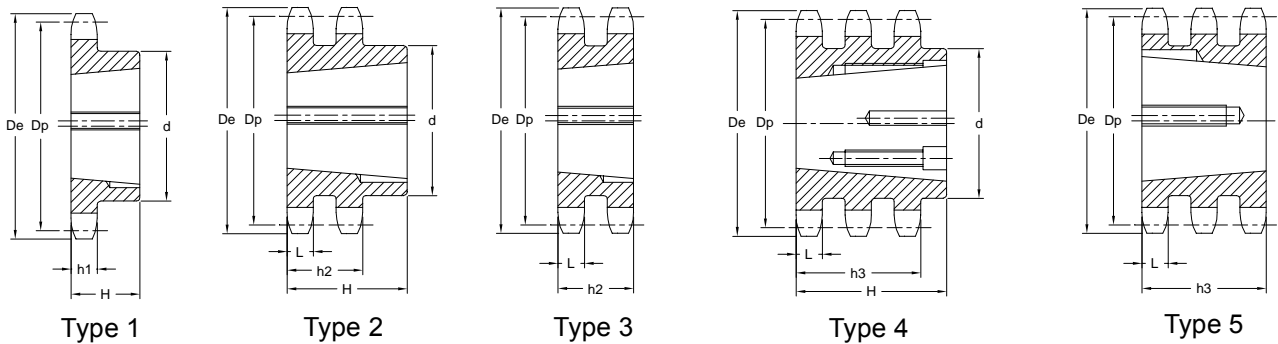
Part No: 12B-21HTL-2517

12B = Chain Size

21 = Number of Teeth

H = Hardened Teeth

TL-2517 = TL Bushing Size



Dimensions in mm

Chain Size 3/4" x 7/16"	Teeth	De	Dp	Single				Double				Triple					
				Part No.	Type	d	H	Part No.	Type	d	H	Part No.	Type	d	H		
12B	13	87.5	79.59	12B-13HTL-1210	1	60	25	—	—	—	—	—	—	—	—	—	—
	14	93.6	85.61	12B-14TL-1610	1	70	25	—	—	—	—	—	—	—	—	—	—
	15	99.8	91.63	12B-15HTL-1610	1	70	25	12B-2-15TL-1610	3	—	30.3	12B-3-15TL-1615	5	—	—	—	—
	16	105.5	97.65	12B-16TL-1610	1	75	25	12B-2-16TL-1610	3	—	30.3	—	—	—	—	—	—
	17	111.5	103.67	12B-17HTL-1610	1	76	25	12B-2-17TL-1610	3	—	30.3	12B-3-17TL-2012	5	—	—	—	—
	18	118.0	109.71	12B-18TL-2012	1	90	32	12B-2-18TL-2012	2	90	32	—	—	—	—	—	—
	19	124.2	115.75	12B-19HTL-2012	1	90	32	12B-2-19TL-2012	2	90	32	12B-3-19TL-2012	5	—	—	—	—
	20	129.7	121.78	12B-20TL-2012	1	90	32	12B-2-20TL-2517	2	108	45	—	—	—	—	—	—
	21	136.0	127.82	12B-21HTL-2517	1	102	45	12B-2-21TL-2517	2	108	45	12B-3-21TL-2517	5	—	—	—	—
	22	141.8	133.86	12B-22TL-2517	1	102	45	12B-2-22TL-2517	2	108	45	—	—	—	—	—	—
	23	149.0	139.90	12B-23HTL-2517	1	108	45	12B-2-23TL-2517	2	108	45	12B-3-23TL-2517	5	—	—	—	—
	24	153.9	145.94	12B-24TL-2517	1	108	45	12B-2-24TL-2517	2	108	45	—	—	—	—	—	—
	25	160.0	152.00	12B-25HTL-2517	1	108	45	12B-2-25TL-2517	2	108	45	12B-3-25TL-2517	5	—	—	—	—
	26	165.9	158.04	12B-26TL-2517	1	108	45	12B-2-26TL-2517	2	108	45	—	—	—	—	—	—
	27	172.3	164.00	12B-27HTL-2517	1	108	45	12B-2-27TL-2517	2	108	45	12B-3-27TL-3020	4	140	51	—	—
	28	178.0	170.13	12B-28TL-2517	1	108	45	12B-2-28TL-2517	2	108	45	—	—	—	—	—	—
	30	190.5	182.25	12B-30HTL-2517	1	108	45	12B-2-30TL-2517	2	108	45	12B-3-30TL-3020	4	140	51	—	—
	38	239.0	230.69	12B-38TL-2517	1	108	45	12B-2-38TL-3020	2	140	51	12B-3-38TL-3020	4	140	51	—	—
	45	282.5	273.10	12B-45TL-2517	1	108	45	12B-2-45TL-3020	2	140	51	12B-3-45TL-3020	4	140	51	—	—
	57	355.4	345.81	12B-57TL-2517	1	108	45	12B-2-57TL-3020	2	140	51	12B-3-57TL-3020	4	140	51	—	—
76	469.9	460.99	12B-76TL-2517	1	108	45	12B-2-76TL-3020	2	140	51	12B-3-76TL-3020	4	140	51	—	—	
95	585.1	576.17	12B-95TL-2517	1	108	45	12B-2-95TL-3020	2	140	51	—	—	—	—	—	—	
114	700.6	691.36	12B-114TL-2525	1	108	64	—	—	—	—	—	—	—	—	—	—	

Note: Shaded items with "H" in Part No. indicates Hardened Teeth.

Metric Sprockets



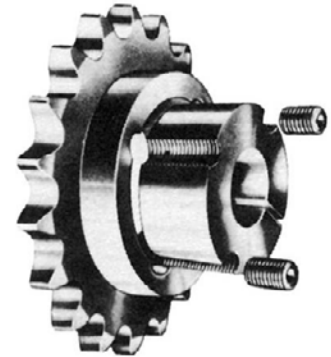
Taper Bushed Type TL

ISO 16B, DIN 8187 - ISO/R 606

Single, Double, Triple

Standard and Hardened Teeth

Material: C45 E



Drawing Dimensions	Sprocket Sizes
	16B
h1	16.2
h2	47.7
h3	79.6
L	15.8

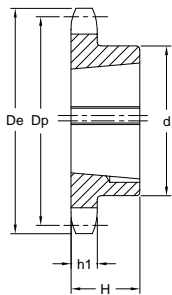
Part No: 16B-21HTL-2517

16B = Chain Size

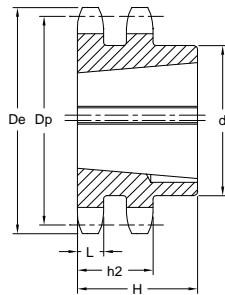
21 = Number of Teeth

H = Hardened Teeth

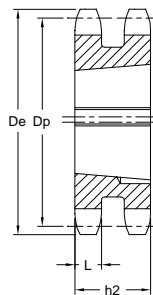
TL-2517 = TL Bushing Size



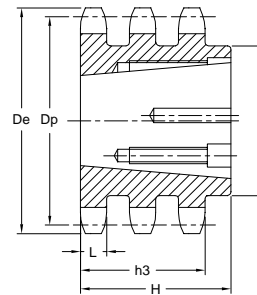
Type 1



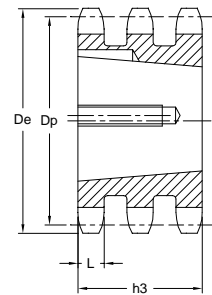
Type 2



Type 3



Type 4



Type 5

Dimensions in mm

Chain Size 1"x 17.02mm	Teeth	D _e	D _p	Single				Double				Triple			
				Part No.	Type	d	H	Part No.	Type	d	H	Part No.	Type	d	H
16B	13	117.0	106.12	16B-13TL-1610	1	73	25	16B-2-13TL-2012	3	—	47.7	—	—	—	—
	14	125.0	114.15	16B-14TL-1610	1	76	25	—	—	—	—	—	—	—	—
	15	133.0	122.17	16B-15HTL-1610	1	76	25	16B-2-15TL-2012	3	—	47.7	—	—	—	—
	16	141.0	130.20	16B-16TL-2012	1	90	32	—	—	—	—	—	—	—	—
	17	149.0	138.22	16B-17HTL-2012	1	90	32	16B-2-17TL-2012	3	—	47.7	16B-3-17TL-2517	5	—	79.6
	18	157.0	146.28	16B-18TL-2517	1	108	45	—	—	—	—	—	—	—	—
	19	165.2	154.33	16B-19HTL-2517	1	108	45	16B-2-19TL-2517	3	—	47.7	16B-3-19TL-3020	5	—	79.6
	20	173.2	162.38	16B-20TL-2517	1	108	45	—	—	—	—	—	—	—	—
	21	181.2	170.43	16B-21HTL-2517	1	110	45	16B-2-21TL-2517	2	140	51	16B-3-21TL-3030	5	—	79.6
	22	184.3	178.48	16B-22TL-2517	1	110	45	—	—	—	—	—	—	—	—
	23	197.5	186.53	16B-23HTL-2517	1	110	45	16B-2-23TL-3020	2	140	51	16B-3-23TL-3525	5	—	79.6
	24	205.5	194.59	16B-24TL-2517	1	110	45	—	—	—	—	—	—	—	—
	25	213.5	202.66	16B-25HTL-2517	1	110	45	16B-2-25TL-3020	2	140	51	16B-3-25TL-3525	5	—	79.6
	26	221.6	210.72	16B-26TL-2517	1	110	45	—	—	—	—	—	—	—	—
	27	229.6	218.79	16B-27HTL-2517	1	110	45	16B-2-27TL-3020	2	140	51	16B-3-27TL-3525	5	—	79.6
	28	237.7	226.85	16B-28TL-2517	1	110	45	—	—	—	—	—	—	—	—
	30	254.0	243.00	16B-30HTL-3020	1	140	51	16B-2-30TL-3020	2	140	51	16B-3-30TL-3525	5	—	79.6
	38	320.7	307.59	16B-38TL-3020	1	140	51	16B-2-38TL-3020	2	140	51	16B-3-38TL-3525	5	—	79.6
	45	377.1	364.13	16B-45TL-3020	1	140	51	16B-2-45TL-3020	2	140	51	16B-3-45TL-4030	4	216	79.6
	57	474.0	461.07	16B-57TL-3020	1	140	51	16B-2-57TL-3525	2	175	65	16B-3-57TL-4030	4	216	79.6
76	627.0	614.65	16B-76TL-3020	1	140	51	16B-2-76TL-3525	2	175	65	16B-3-76TL-4030	4	216	79.6	
95	781.1	768.22	16B-95TL-3020	1	140	51	16B-2-95TL-3525	2	215	65	16B-3-95TL-4030	4	240	79.6	
114	943.3	921.81	16B-114TL-3030	1	140	76	16B-2-114TL-4040	2	215	102	—	—	—	—	

Note: Shaded items with "H" in Part No. indicates Hardened Teeth.

Metric Sprockets



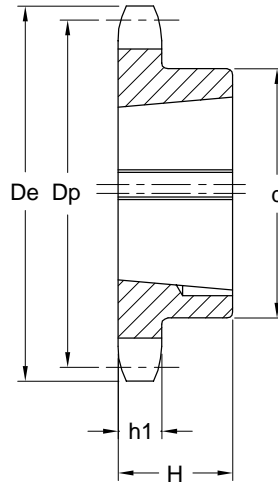
Taper Bushed Type TL

ISO 20B, DIN 8187 - ISO/R 60

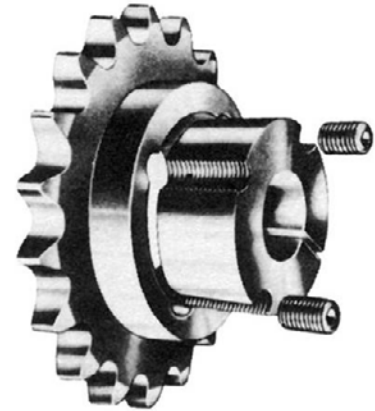
Standard and Hardened Teeth

Material: C45 E

Drawing Dimensions	Sprocket Sizes
	20B
h_1	18.5
h_2	54.6
h_3	91



Type 1



Part No: 20B-17HTL-2517

20B = Chain Size

17 = Number of Teeth

H = Hardened Teeth

TL-2517 = TL Bushing Size

Dimensions in mm

Chain Size 1-1/4" x 3/4"	Teeth	D_e	D_p	Single				Wt. kg
				Part No.	Type	d	H	
20B	13	147.8	132.65	20B-13TL-2012	1	90	32	1.4
	14	157.8	142.68	20B-14TL-2012	1	90	32	1.9
	15	167.9	152.72	20B-15HTL-2517	1	108	45	2.5
	16	177.9	162.75	20B-16TL-2517	1	108	45	2.8
	17	187.9	172.78	20B-17HTL-2517	1	108	45	3.3
	18	198.0	182.85	20B-18TL-2517	1	108	45	3.5
	19	208.1	192.91	20B-19HTL-2517	1	108	45	4.0
	20	218.1	202.98	20B-20TL-2517	1	108	45	4.3
	21	228.2	213.04	20B-21HTL-2517	1	108	45	5.0
	22	238.3	223.11	20B-22TL-2517	1	108	45	5.5
	23	248.3	233.17	20B-23HTL-2517	1	108	45	6.0
	24	258.4	243.23	20B-24TL-2517	1	108	45	6.5
	25	268.5	253.33	20B-25HTL-2517	1	108	45	7.2
	27	288.6	273.40	20B-27TL-3020	1	150	51	9.0
	30	318.9	303.75	20B-30TL-3020	1	150	51	11.0
	38	399.6	384.49	20B-38TL-3020	1	160	51	17.5
	45	470.3	455.17	20B-45TL-3020	1	160	51	24.5
57	591.5	576.36	20B-57TL-3020	1	160	51	38.0	
76	783.5	768.32	20B-76TL-3020	1	160	51	67.0	

Note: Shaded items with "H" in Part No. indicates Hardened Teeth.