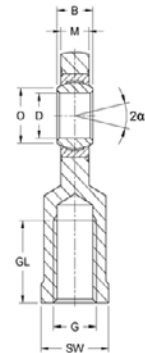
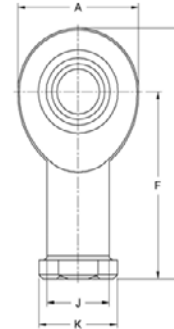


Metric Rod Ends



EI..D SS Type

Stainless Steel
Maintenance Free
Right & Left Hand - Internal Threads
Suited for High Uni-directional Loads,
Corrosive Environments, Narrow Widths



Housing: Size 6 to 40 stainless steel to 1.4301, Aisi 304, forged, polished

Size 45 stainless steel to 1.4301, Aisi 304, turned

Size 50 stainless steel to 1.4571, Aisi 316Ti, turned

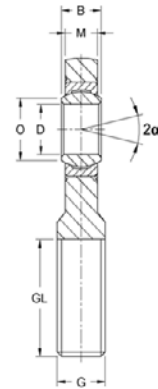
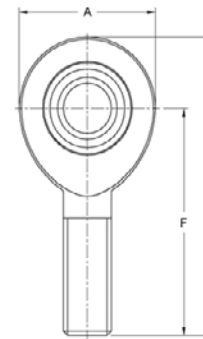
Bearing: Maintenance free stainless steel Spherical Plain Bearing GE..EC-NIRO

Right Hand Part No.	Left Hand Part No.	Size D	Dimensions (mm)											Static Load C ₀ kN	Dynamic Load C kN	Max Speed RPM	Wt. g
			B	M	A	F	L	K	J	O	SW	G	GL				
EI 6 D-SS	EIL 6 D-SS	6	6	4.4	20	30	40.0	13	10.0	8.0	11	M6 x 1	12	6.0	4	13	21
EI 8 D-SS	EIL 8 D-SS	8	8	6.0	24	36	48.0	16	12.5	10.2	14	M8 x 1.25	16	9.2	7	15	38
EI 10 D-SS	EIL 10 D-SS	10	9	7.0	28	43	57.0	19	15.0	13.2	17	M10 x 1.5	20	13.6	10	12	60
EI 12 D-SS	EIL 12 D-SS	12	10	8.0	34	50	67.0	22	17.5	14.9	19	M12 x 1.75	23	18.0	14	11	96
EI 15 D-SS	EIL 15 D-SS	15	12	10.0	40	61	81.0	26	21.0	18.4	22	M14 x 2	29	26.5	30	8	180
EI 16 D-SS	EIL 16 D-SS	16	14	11.0	46	67	90.0	30	24.0	20.7	27	M16 x 2	33	34.0	39	10	220
EI 17 D-SS	EIL 17 D-SS	17	14	11.0	46	67	90.0	30	24.0	20.7	27	M16 x 2	33	34.0	39	10	220
EI 20 D-SS	EIL 20 D-SS	20	16	13.0	53	77	103.5	35	27.5	24.2	32	M20 x 1.5	40	45.0	54	9	350
EI 25 D-SS	EIL 25 D-SS	25	20	17.0	64	94	126.0	42	33.5	29.3	36	M24 x 2	48	73.0	96	7	640
EI 30 D-SS	EIL 30 D-SS	30	22	19.0	73	110	146.5	50	40.0	34.2	41	M30 x 2	56	97.0	118	6	930
EI 35 D-SS	EIL 35 D-SS	35	25	21.0	82	125	166.0	58	47.0	39.8	50	M36 x 3	60	111.0	153	6	1300
EI 40 D-SS	EIL 40 D-SS	40	28	23.0	92	142	188.0	65	52.0	45.0	55	M39 x 3	65	135.0	190	7	2000

Note: Sizes 45, 50, 60, 70 and 80 available on request

EA..D SS Type

Stainless Steel
Maintenance Free
Right & Left Hand - External Threads
Suited for High Uni-directional Loads,
Corrosive Environments, Narrow Widths



Housing: Size 6 to 40 stainless steel to 1.4301, Aisi 304, forged, polished

Size 45 stainless steel to 1.4301, Aisi 304, turned

Size 50 stainless steel to 1.4571, Aisi 316Ti, turned

Bearing: Maintenance free stainless steel Spherical Plain Bearing GE..EC-NIRO

Right Hand Part No.	Left Hand Part No.	Size D	Dimensions (mm)								Static Load C ₀ kN	Dynamic Load C kN	Max Speed RPM	Wt. g
			B	M	A	F	L	O	G	GL				
EA 6 D-SS	EAL 6 D-SS	6	6	4.4	20	36	46.0	8.0	M6 x 1	18	4.0	4	13	16
EA 8 D-SS	EAL 8 D-SS	8	8	6.0	24	42	54.0	10.2	M8 x 1.25	22	7.4	7	15	28
EA 10 D-SS	EAL 10 D-SS	10	9	7.0	28	48	62.0	13.2	M10 x 1.5	26	11.6	10	12	50
EA 12 D-SS	EAL 12 D-SS	12	10	8.0	34	54	71.0	14.9	M12 x 1.75	28	17.0	14	11	86
EA 15 D-SS	EAL 15 D-SS	15	12	10.0	40	63	83.0	18.4	M14 x 2	34	23.0	30	8	140
EA 16 D-SS	EAL 16 D-SS	16	14	11.0	46	69	92.0	20.7	M16 x 2	36	31.5	39	10	190
EA 17 D-SS	EAL 17 D-SS	17	14	11.0	46	69	92.0	20.7	M16 x 2	36	31.5	39	10	190
EA 20 D-SS	EAL 20 D-SS	20	16	13.0	53	78	104.5	24.2	M20 x 1.5	43	45.0	54	9	320
EA 25 D-SS	EAL 25 D-SS	25	20	17.0	64	94	126.0	29.3	M24 x 2	43	73.0	96	7	560
EA 30 D-SS	EAL 30 D-SS	30	22	19.0	73	110	146.5	34.2	M30 x 2	65	97.0	118	6	890
EA 35 D-SS	EAL 35 D-SS	35	25	21.0	82	140	181.0	39.8	M36 x 3	82	111.0	153	6	1400
EA 40 D-SS	EAL 40 D-SS	40	28	23.0	92	150	196.0	45.0	M39 x 3	86	135.0	190	7	1800

Note: Sizes 45, 50, 60, 70 and 80 available on request