

Adapter Sleeves

H200 Series

H3000 Series

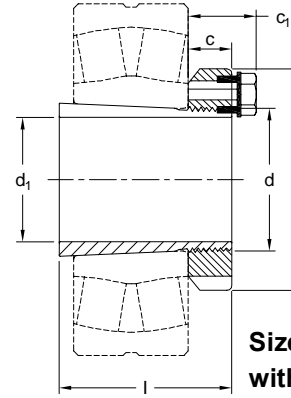
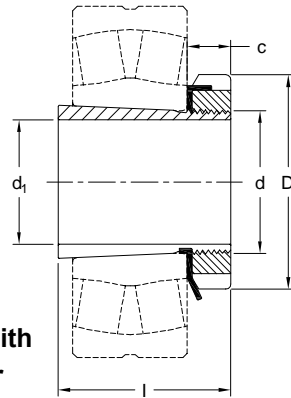
Metric & Inch Bores

For 200 and 230 Series

Spherical Bearings



Sizes thru 40 with
nut and washer



Sizes 44 and up
with locking clip



H 200 Series

Metric Bore		Inch Bore		Other Stock Bores	Dimensions (mm)					Nut	Lock Washer	Weight kg
Part No.	d ₁	Part No.	d ₁		d	l	D	c	c ₁			
H204	17	—	—	—	20	24	32	7	—	KM4	MB4	0.1
H205	20	H205 x 3/4	3/4	—	25	26	38	8	—	KM5	MB5	0.1
H206	25	H206 x 1	1	—	30	27	45	8	—	KM6	MB6	0.1
H207	30	H207 x 1-3/16	1-3/16	—	35	29	52	9	—	KM7	MB7	0.1
H208	35	H208 x 1-1/4	1-1/4	—	40	31	58	10	—	KM8	MB8	0.2
H209	40	H209 x 1-7/16	1-7/16	1-1/2	45	33	65	11	—	KM9	MB9	0.2
H210	45	H210 x 1-11/16	1-11/16	1-3/4	50	35	70	12	—	KM10	MB10	0.3
H211	50	H211 x 1-15/16	1-15/16	2	55	37	75	12	—	KM11	MB22	0.3
H212	55	—	—	—	60	38	80	13	—	KM12	MB12	0.4
H213	60	H213 x 2-3/16	2-3/16	2-1/4	65	40	85	14	—	KM13	MB13	0.4
H214	60	—	—	—	70	41	92	14	—	KM14	MB14	0.6
H215	65	H215 x 2-7/16	2-7/16	2-1/2	75	43	98	15	—	KM15	MB15	0.7
H216	70	H216 x 2-11/16	2-11/16	2-3/4	80	46	105	17	—	KM16	MB16	0.9
H217	75	H217 x 2-15/16	2-15/16	3	85	50	110	18	—	KM17	MB17	1.0
H218	80	H218 x 3-3/16	3-3/16	—	90	52	120	18	—	KM18	MB18	1.2
H219	85	H219 x 3-1/4	3-1/4	—	95	55	125	19	—	KM19	MB19	1.3
H220	90	H220 x 3-7/16	3-7/16	3-1/2	100	58	130	20	—	KM20	MB20	1.5
H221	95	—	—	—	105	60	140	20	—	KM21	MB21	1.7
H222	100	H222 x 4	4	—	110	63	145	21	—	KM22	MB22	1.9

H3000 Series

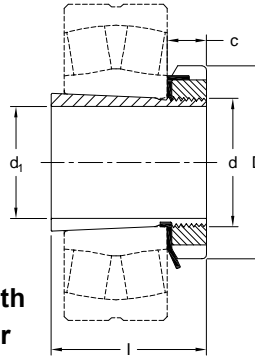
Metric Bore		InchBore		Other Stock Bores	Dimensions (mm)					Nut	Lock Washer	Weight kg
Part No.	d ₁	Part No.	d ₁		d	l	D	c	c ₁			
H3024	110	H3024 x 4-3/16	4-3/16	4-1/4	120	72	145	22	—	KML24	MBL24	2.0
H3026	115	H3026 x 4-7/16	4-7/16	4-1/2	130	80	155	23	—	KML26	MBL26	2.9
H3028	125	H3028 x 4-15/16	4-15/16	5	140	82	165	24	—	KML28	MBL28	3.2
H3030	135	H3030 x 5-3/16	5-3/16	5-1/4	150	87	180	26	—	KML30	MBL30	3.9
H3032	140	H3032 x 5-7/16	5-7/16	5-1/2	160	93	190	27.5	—	KML32	MBL32	5.2
H3034	150	H3034 x 5-15/16	5-15/16	6	170	101	200	28.5	—	KML34	MBL34	6.0
H3036	160	H3036 x 6-7/16	6-7/16	6-1/2	180	109	210	29.5	—	KML36	MBL36	6.9
H3038	170	H3038 x 6-15/16	6-15/16	7	190	112	220	30.5	—	KML38	MBL38	7.5
H3040	180	H3040 x 7-3/16	7-3/16	—	200	120	240	31.5	—	KML40	MBL40	9.2
H3044	200	H3044 x 7-15/16	7-15/16	8	220	128	260	30	41	HM3044	MS3044	10.3
H3048	220	H3048 x 8-7/16	8-7/16	8-1/2, 8-15/16, 9	240	133	290	34	46	HM3048	MS3048	13.2
H3052	240	H3052 x 9-7/16	9-7/16	9-1/2	260	147	310	34	46	HM3052	MS3052	15.3
H3056	260	H3056 x 9-15/16	9-15/16	10, 10-7/16, 10-1/2	280	152	330	38	50	HM3056	MS3056	17.7
H3060	280	H3060 x 10-15/16	10-15/16	11	300	168	360	42	54	HM3060	MS3060	22.8
H3064	300	H3064 x 11-15/16	11-15/16	11-1/2, 12	320	171	380	42	55	HM3064	MS3064	24.6
H3068	320	H3068 x 12-1/2	12-1/2	12-7/16	340	187	400	45	58	HM3068	MS3068	28.7
H3072	340	H3072 x 12-15/16	12-15/16	13, 13-7/16	360	188	420	45	58	HM3072	MS3072	30.5
H3076	360	H3076 x 13-15/16	13-15/16	14	380	193	450	48	62	HM3076	MS3076	35.8
H3080	380	H3080 x 15	15	14-15/16	400	210	470	52	66	HM3080	MS3080	41.3
H3084	400	H3084 x 15-3/4	15-3/4	—	420	212	490	52	66	HM3084	MS3084	43.7
H3088	410	H3088 x 16-1/2	16-1/2	—	440	228	520	60	77	HM3088	MS3088	65.2
H3092	430	H3092 x 17	17	—	460	234	540	60	77	HM3092	MS3092	69.5
H3096	450	H3096 x 18	18	—	480	237	560	60	77	HM3096	MS3096	73.3

Note: Hydraulic Adapter sleeves are also available with oil ducts for hydraulic removal.

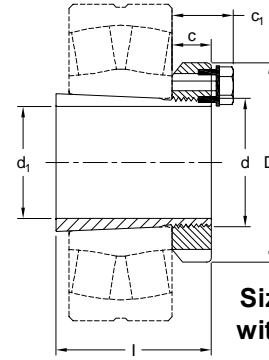
Adapter Sleeves



H300 Series (for 222 Series Bearings)
H3100 Series (for 231 Series Bearings)
Metric & Inch Bores



Sizes thru 40 with
nut and washer



Sizes 44 and up
with locking clip

H300 Series

Part No.	Metric Bore	Inch Bore		Other Stock Bores	Dimensions (mm)					Nut	Lock Washer	Weight kg
	d ₁	Part No.	d ₁		d	l	D	c	c ₁			
H304	17	—	—	—	20	28	32	7	—	KM4	MB4	0.1
H305	20	H305 x 3/4	3/4	11/16	25	29	38	8	—	KM5	MB5	0.1
H306	25	H306 x 15/16	15/16	1	30	31	45	8	—	KM6	MB6	0.1
H307	30	H307 x 1-3/16	1-3/16	1-1/8, 1-1/4	35	35	52	9	—	KM7	MB7	0.1
H308	35	H308 x 1-1/4	1-1/4	—	40	36	58	10	—	KM8	MB8	0.2
H309	40	H309 x 1-7/16	1-7/16	1-1/2	45	39	65	11	—	KM9	MB9	0.3
H310	45	H310 x 1-11/16	1-11/16	1-3/4	50	42	70	12	—	KM10	MB10	0.3
H311	50	H311 x 1-15/16	1-15/16	2	55	45	75	12	—	KM11	MB11	0.3
H312	55	H312 x 2-1/8	2-1/8	—	60	47	80	13	—	KM12	MB12	0.4
H313	60	H313 x 2-3/16	2-3/16	2-1/4	65	50	85	14	—	KM13	MB13	0.5
H314	60	H314 x 2-5/16	2-5/16	—	70	52	92	14	—	KM14	MB14	0.7
H315	65	H315 x 2-7/16	2-7/16	2-1/2	75	55	98	15	—	KM15	MB15	0.8
H316	70	H316 x 2-11/16	2-11/16	2-3/4	80	59	105	17	—	KM16	MB16	1.0
H317	75	H317 x 2-15/16	2-15/16	3	85	63	110	18	—	KM17	MB17	1.2
H318	80	H318 x 3-3/16	3-3/16	3-1/4	90	65	120	18	—	KM18	MB18	1.4
H319	85	H319 x 3-5/16	3-5/16	3-3/8	95	68	125	19	—	KM19	MB19	1.6
H320	90	H320 x 3-7/16	3-7/16	3-1/2	100	71	130	20	—	KM20	MB20	1.7
H321	95	H321 x 3-11/16	3-11/16	3-3/4	105	74	140	20	—	KM21	MB21	2.0
H322	100	H322 x 3-15/16	3-15/16	4	110	77	145	21	—	KM22	MB22	2.2

H3100 Series

Part No.	Metric Bore	Inch Bore		Other Stock Bores	Dimensions (mm)					Nut	Lock Washer	Weight kg
	d ₁	Part No.	d ₁		d	l	D	c	c ₁			
H3120	90	H3120 x 3-7/16	3-7/16	3-1/2	100	76	130	20	—	KM20	MB20	1.8
H3122	100	H3122 x 3-15/16	3-15/16	4	110	81	145	21	—	KM22	MB22	2.3
H3124	110	H3124 x 4-3/16	4-3/16	4-1/4	120	88	155	22	—	KM24	MB24	2.7
H3126	115	H3126 x 4-7/16	4-7/16	4-1/2	130	92	165	23	—	KM26	MB26	3.7
H3128	125	H3128 x 4-15/16	4-15/16	5	140	97	180	24	—	KM28	MB28	4.4
H3130	135	H3130 x 5-3/16	5-3/16	5-1/4	150	111	195	26	—	KM30	MB30	5.5
H3132	140	H3132 x 5-7/16	5-7/16	5-1/2	160	119	210	28	—	KM32	MB32	7.7
H3134	150	H3134 x 5-15/16	5-15/16	6	170	122	220	29	—	KM34	MB34	8.4
H3136	160	H3136 x 6-7/16	6-7/16	6-1/2	180	131	230	30	—	KM36	MB36	9.5
H3138	170	H3138 x 6-15/16	6-15/16	7	190	141	240	31	—	KM38	MB38	11.0
H3140	180	H3140 x 7-3/16	7-3/16	—	200	150	250	32	—	KM40	MB40	12.0
H3144	200	H3144 x 7-15/16	7-15/16	8	220	161	280	32	44	HM3144	MS3144	14.7
H3148	220	H3148 x 8-1/2	8-1/2	—	240	172	300	34	46	HM3148	MS3148	17.3
H3152	240	H3152 x 9-1/2	9-1/2	9-7/16	260	190	330	36	49	HM3152	MS3152	22.0
H3156	260	H3156 x 10-7/16	10-7/16	10-1/2	280	195	350	38	51	HM3156	MS3156	24.5
H3160	280	H3160 x 11	11	10-15/16	300	208	380	40	53	HM3160	MS3160	30.2
H3164	300	H3164 x 11-1/2	11-1/2	11-7/16, 11-15/16, 12	320	226	400	42	56	HM3164	MS3164	34.9
H3168	320	H3168 x 12-1/2	12-1/2	12-7/16	340	254	440	55	72	HM3168	MS3168	49.5
H3172	340	H3172 x 13	13	12-15/16, 13-7/16, 13-1/2	360	259	460	58	75	HM3172	MS3172	54.2
H3176	360	H3176 x 14	14	13-15/16	380	264	490	60	77	HM3176	MS3176	61.7
H3180	380	H3180 x 15	15	14-15/16	400	272	520	62	82	HM3180	MS3180	70.6
H3184	400	H3184 x 15-3/4	15-3/4	—	420	304	540	70	90	HM3184	MS3184	84.2
H3188	410	H3188 x 16-1/2	16-1/2	—	440	307	560	70	90	HM3188	MS3188	104.0
H3192	430	H3192 x 17	17	—	460	326	580	75	95	HM3192	MS3192	116.0
H3196	450	H3196 x 18	18	—	480	335	620	75	95	HM3196	MS3196	133.0

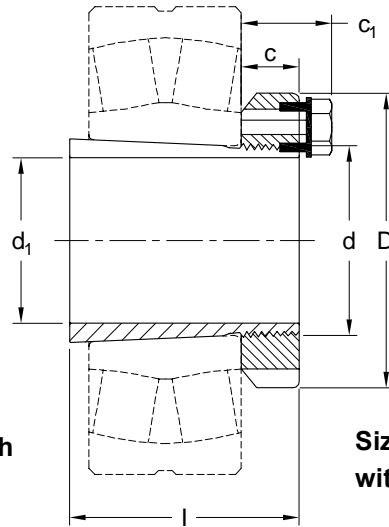
Note: Hydraulic Adapter sleeves, from size OH3132 are also available with oil ducts for hydraulic removal.

Adapter Sleeves

H 2300 Series

For 223 Series Spherical Bearings

Metric & Inch Bores



Sizes thru 40 with
nut and washer

Sizes 44 and up
with locking clip

H2300 Series

Metric Bore		Inch Bore	Other Stock Bores	Dimensions in mm					Nut	Lock Washer	Weight kg
Part No.	d ₁	Part No.		d	l	D	c	c ₁			
H2304	17	—	—	20	31	32	7	—	KM4	MB4	0.1
H2305	20	H2305 x 3/4	—	25	35	38	8	—	KM5	MB5	0.1
H2306	25	H2306 x 7/8	15/16, 1	30	38	45	8	—	KM6	MB6	0.1
H2307	30	H2307 x 1-3/16	1-1/8	35	43	52	9	—	KM7	MB7	0.2
H2308	35	H2308 x 1-1/4	1-3/8, 1-5/16	40	46	58	10	—	KM8	MB8	0.2
H2309	40	H2309 x 1-7/16	1-1/2	45	50	65	11	—	KM9	MB9	0.3
H2310	45	H2310 x 1-11/16	1-3/4	50	55	70	12	—	KM10	MB10	0.4
H2311	50	H2311 x 1-7/8	1-15/16, 2	55	59	75	12	—	KM11	MB11	0.4
H2312	55	H2312 x 2-1/8	—	60	62	80	13	—	KM12	MB12	0.5
H2313	60	H2313 x 2-3/16	2-1/4, 2-3/8	65	65	85	14	—	KM13	MB13	0.6
H2314	60	—	—	70	68	92	14	—	KM14	MB14	0.9
H2315	65	H2315 x 2-7/16	2-1/2, 2-5/8	75	73	98	15	—	KM15	MB15	1.1
H2316	70	H2316 x 2-11/16	2-3/4	80	78	105	17	—	KM16	MB16	1.3
H2317	75	H2317 x 2-15/16	3	85	82	110	18	—	KM17	MB17	1.5
H2318	80	H2318 x 3-3/16	3-1/4	90	86	120	18	—	KM18	MB18	1.7
H2319	85	H2319 x 3-1/4	—	95	90	125	19	—	KM19	MB19	1.9
H2320	90	H2320 x 3-7/16	3-1/2	100	97	130	20	—	KM20	MB20	2.2
H2321	95	—	-	105	101	140	20	—	KM21	MB21	2.5
H2322	100	H2322 x 3-15/16	4	110	105	145	21	—	KM22	MB22	2.8
H2324	110	H2324 x 4-3/16	4-1/4	120	112	155	22	—	KM24	MB24	3.2
H2326	115	H2326 x 4-7/16	4-1/2	130	121	165	23	—	KM26	MB26	4.6
H2328	125	H2328 x 4-15/16	5	140	131	180	24	—	KM28	MB28	5.5
H2330	135	H2330 x 5-3/16	5-1/4	150	139	195	26	—	KM30	MB30	6.6
H2332	140	H2332 x 5-7/16	5-1/2	160	147	210	28	—	KM32	MB32	9.2
H2334	150	H2334 x 5-15/16	6	170	154	220	29	—	KM34	MB34	10.0
H2336	160	H2336 x 6-7/16	6-1/2	180	161	230	30	—	KM36	MB36	11.0
H2338	170	H2338 x 6-15/16	6-3/4	190	169	240	31	—	KM38	MB38	12.5
H2340	180	H2340 x 7-3/16	7	200	176	250	32	—	KM40	MB40	14.0
H2344	200	H2344 x 7-15/16	—	220	186	280	32	44	HM3144	MS3144	16.7
H2348	220	H2348 x 8-15/16	—	240	199	300	34	46	HM3148	MS3148	19.7
H2352	240	H2352 x 9-7/16	—	260	211	330	36	49	HM3152	MS3152	24.2
H2356	260	—	—	280	224	350	38	51	HM3156	MS3156	27.8

Note: Hydraulic Adapter sleeves, from size OH2332 are also available with oil ducts on the outer and inner diameter for hydraulic removal.

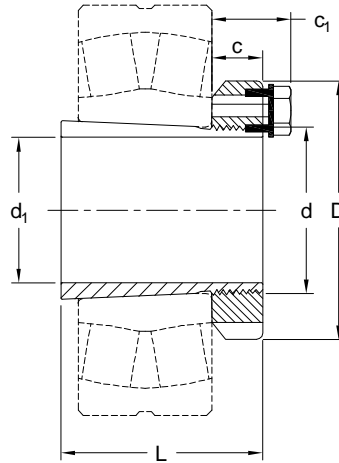
Adapter Sleeves



H2300 & H3200 Series Metric & Inch Bores With Nut and Lock Plate



Use with 232 Series
Spherical Bearings



H2300 & H3200 Series

Dimensions in mm

Part No.	Metric Bore	Inch Bore		Other Stock Bores	Dimensions (mm)					Standard Nut	Lock Plate	Lock Plate Bolt	Weight kg
	d ₁	Part No.	d ₁		d	L	D	c	c ₁				
H2348	220	H2348 x 8-15/16	8-15/16	9	240	199	300	34	50	HM 3148	MS3148	M8 x 16	18
H2352	240	H2352 x 9-1/2	9-1/2	9-7/16	260	221	330	36	51	HM3152	MS3152	M8 x 16	21
H2356	260	H2356 x 10	10	9-15/16, 10-7/16, 10-1/2	280	223	350	38	53	HM3156	MS3156	M8 x 16	23
H3260	280	H3260 x 11	11	10-15/16	300	240	380	40	54	HM3160	MS3160	M10 x 30	34
H3264	300	H3264 x 12	12	11-7/16, 11-1/2, 11-15/16	320	258	400	42	55	HM3164	MS3164	M10 x 30	40
H3268	320	H3268 x 12-1/2	12-1/2	12-7/16	340	288	440	55	70	HM3168	MS3168	M12 x 25	55
H3272	340	H3272 x 13	13	12-15/16, 13-7/16, 13-1/2	360	299	460	58	73	HM3172	MS3172	M12 x 25	61
H3276	360	H3276 x 14	14	13-15/16	380	310	490	60	75	HM3176	MS3176	M12 x 25	70
H3280	380	H3280 x 15	15	14-15/16	400	328	520	62	77	HM3180	MS3180	M16 x 30	76
H3284	400	H3284 x 15-3/4	15-3/4	—	420	352	540	70	85	HM3184	MS3184	M16 x 30	94
H3288	410	H3288 x 16-1/2	16-1/2	—	440	361	560	70	85	HM3188	MS3188	M16 x 30	118
H3292	430	H3292 x 17	17	—	460	382	580	75	90	HM3192	MS3192	M16 x 30	132
H3296	450	H3296 x 18	18	—	480	397	620	75	90	HM3196	MS3196	M16 x 30	152

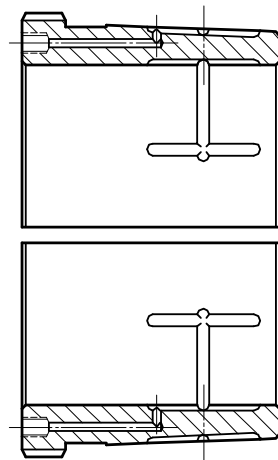
Note: Larger Adapters on request. Sizes to H32/1000 possible. Hydraulic Nuts - - E are also available to assist in bearing mounting. See Hydraulic Nut page. Sleeves also available as Hydraulic OH Series Adapters.

Hydraulic Adapter Sleeves

Nuts and Withdrawal Sleeves

Hydraulic Adapter Sleeves and Withdrawal Sleeves are available on bores that exceed 200mm (8" inch). Adding this feature to smaller units is possible when requested.

The oil channels allow hydraulic fluid to expand the bearing inner ring slightly to assist installation and removal. Hydraulic nuts to assist installation are also available.



Hydraulic Adapter Sleeve



Hydraulic Withdrawal Sleeve



Hydraulic Nut