

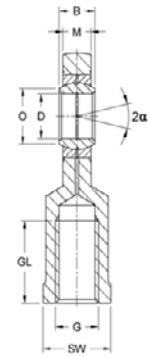
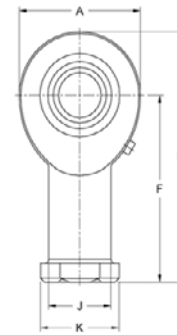
# Metric Rod Ends

## EI Type

- Steel on Steel
- Grease Fitting for Re-Lube
- Right & Left Hand-Internal Threads
- Suited for High Multi-directional Loads and Narrow Width

**Housing:** Sizes 6-10 turned from free-cutting steel to 9SMnPb28K, 12L13  
 Sizes 12 and up forged from heat-treated steel to C45, Aisi1045

**Bearing:** Steel on steel bearing GE...E, requiring lubrication  
 Size 20 and up available sealed from both sides (-2RS)  
 Size 6-17 without grease fitting  
 Size 20 and up with grease fitting  
 Size 20,25 & 30 available with or without 2RS Seals  
 Size 35 and larger all with 2RS Seals



Right Hand Part No.	Left Hand Part No.	Size D	Dimensions (mm)											Static Load C <sub>0</sub> kN	Dynamic Load C kN	Max Speed RPM	Wt. g
			B	M	A	F	L	K	J	O	SW	G	GL				
EI 6	EIL 6	6	6	4.4	20	30	40.0	13	10.0	8.0	11	M6 x 1	12	10.3	3.4	13	21
EI 8	EIL 8	8	8	6.0	24	36	48.0	16	12.5	10.2	14	M8 x 1.25	16	15.8	5.5	15	38
EI 10	EIL10	10	9	7.0	28	43	57.0	19	15.0	13.2	17	M10 x 1.5	20	23.4	8.1	12	60
EI 12	EIL 12	12	10	8.0	34	50	67.0	22	17.5	14.9	19	M12 x 1.75	23	31.0	10.8	11	96
EI 15	EIL 15	15	12	10.0	40	61	81.0	26	21.0	18.4	22	M14 x 2	29	42.5	17.0	8	180
EI 16	EIL 16	16	14	11.0	46	67	90.0	30	24.0	20.7	27	M16 x 2	33	54.5	21.2	10	220
EI 17	EIL 17	17	14	11.0	46	67	90.0	30	24.0	20.7	27	M16 x 2	33	54.5	21.2	10	220
EI 20 (-2RS)*	EIL 20 (-2RS)*	20	16	13.0	53	77	103.5	35	27.5	24.2	32	M20 x 1.5	40	62.5	30.0	9	350
EI 25 (-2RS)*	EIL 25 (-2RS)*	25	20	17.0	64	94	126.0	42	33.5	29.3	36	M24 x 2	48	92.0	48.0	7	640
EI 30 (-2RS)*	EIL 30 (-2RS)*	30	22	19.0	73	110	146.5	50	40.0	34.2	41	M30 x 2	56	124.0	62.0	6	930
EI 35 -2RS	EIL 35 -2RS	35	25	21.0	82	125	166.0	58	47.0	39.8	50	M36 x 3	60	144.0	80.0	6	1300
EI 40 -2RS	EIL 40 -2RS	40	28	23.0	92	142	188.0	65	52.0	45.0	55	M39 x 3	65	178.0	100.0	7	2000

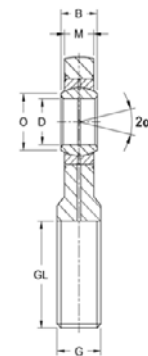
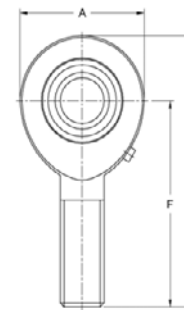
Note: Size 45,50,60,70 and 80mm units available on request. \* Available with or without seals.

## EA Type

- Steel on Steel
- Grease Fitting for Re-Lube
- Right & Left Hand-External Threads
- Suited for High Multi-directional Loads and Narrow Width

**Housing:** Sizes 6-10 turned from free-cutting steel to 9SMnPb28K, 12L13  
 Sizes 12 and up forged from heat-treated steel to C45, Aisi1045

**Bearing:** Steel on steel bearing GE...E, requiring lubrication  
 Size 20 and up available sealed from both sides (-2RS)  
 Size 6-17 without grease fitting  
 Size 20 and up with grease fitting  
 Size 20,25 & 30 available with or without 2RS Seals  
 Size 35 and larger all with 2RS Seals



Right Hand Part No.	Left Hand Part No.	Size D	Dimensions (mm)								Static Load C <sub>0</sub> kN	Dynamic Load C kN	Max Speed RPM	Wt. g
			B	M	A	F	L	O	G	GL				
EA 6	EAL 6	6	6	4.4	20	36	46.0	8.0	M6 x 1	18	6.9	3.4	13	16
EA 8	EAL 8	8	8	6.0	24	42	54.0	10.2	M8 x 1.25	22	12.7	5.5	15	28
EA 10	EAL10	10	9	7.0	28	48	62.0	13.2	M10 x 1.5	26	19.9	8.1	12	50
EA 12	EAL 12	12	10	8.0	34	54	71.0	14.9	M12 x 1.75	28	29.0	10.8	11	86
EA 15	EAL 15	15	12	10.0	40	63	83.0	18.4	M14 x 2	34	39.5	17.0	8	140
EA 16	EAL 16	16	14	11.0	46	69	92.0	20.7	M16 x 2	36	54.0	21.2	10	190
EA 17	EAL 17	17	14	11.0	46	69	92.0	20.7	M16 x 2	36	54.0	21.2	10	190
EA 20 (-2RS)*	EAL 20 (-2RS)*	20	16	13.0	53	78	104.5	24.2	M20 x 1.5	43	62.5	30.0	9	320
EA 25 (-2RS)*	EAL 25 (-2RS)*	25	20	17.0	64	94	126.0	29.3	M24 x 2	43	92.0	48.0	7	560
EA 30 (-2RS)*	EAL 30 (-2RS)*	30	22	19.0	73	110	146.5	34.2	M30 x 2	65	124.0	62.0	6	890
EA 35 -2RS	EAL 35 -2RS	35	25	21.0	82	140	181.0	39.8	M36 x 3	82	144.0	80.0	6	1400
EA 40 -2RS	EAL 40 -2RS	40	28	23.0	92	150	196.0	45.0	M39 x 3	86	178.0	100.0	7	1800

Note: Size 45,50,60,70 and 80mm units available on request. \* Available with or without seals.