

Metric Rod Ends

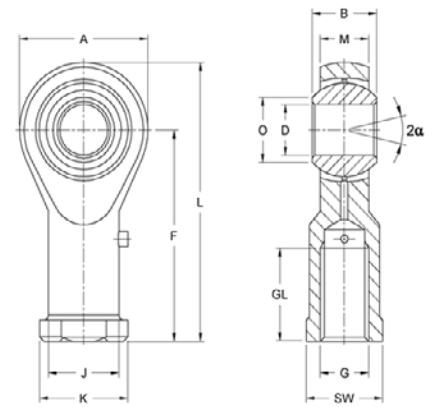
GI Type

Standard Duty, Zinc Plated
Grease Fitting for Re-Lube
Right & Left Hand - Internal Threads
Suited for Axial Loads

Housing: Sizes 5-12 turned from free-cutting steel to 9SMnPb28K, 12L13, sizes 14 and up are forged from heat-treated steel to C22, M1023

Insert: Special brass to CuZn40Al1

Ball: Bearing steel 100Cr6 (Aisi 52100), hardened, ground, polished



Right Hand Part No.	Left Hand Part No.	Size D	Dimensions (mm)											Static Load C _o kN	Dynamic Load C kN	Max Speed RPM	Wt. g
			B	M	A	F	L	K	J	O	SW	G	GL				
GI 5	GIL 5	5	8	6.00	18	27	36	11	9.0	7.7	9	M5 x 0.8	10	9.9	2.5	900	18
GI 6	GIL 6	6	9	6.75	20	30	40	13	10.0	8.9	11	M6 x 1	12	11.9	3.2	760	27
GI 8	GIL 8	8	12	9.00	24	36	48	16	12.5	10.4	13	M8 x 1.25	16	17.1	5.4	620	46
GI 10	GIL 10	10	14	10.50	28	43	57	19	15.0	12.9	17	M10 x 1.5	20	21.4	7.5	500	76
GI 12	GIL 12	12	16	12.00	32	50	66	22	17.5	15.4	19	M12 x 1.75	22	27.0	10.0	450	115
GI 14	GIL 14	14	19	13.50	36	57	75	25	20.0	16.8	22	M14 x 2	25	24.5	13.0	360	170
GI 16	GIL 16	16	21	15.00	42	64	85	27	22.0	19.3	22	M16 x 2	28	37.0	16.0	350	230
GI 18	GIL 18	18	23	16.50	46	71	94	31	25.0	21.8	27	M18 x 1.5	32	43.0	19.5	320	320
GI 20	GIL 20	20	25	18.00	50	77	102	34	27.5	24.3	32	M20 x 1.5	33	49.5	23.5	280	415
GI 22	GIL 22	22	28	20.00	54	84	111	37	30.0	25.8	32	M22 x 1.5	37	57.0	29.0	250	540
GI 25	GIL 25	25	31	22.00	60	94	124	42	33.5	29.6	36	M24 x 2	42	68.0	35.0	230	750

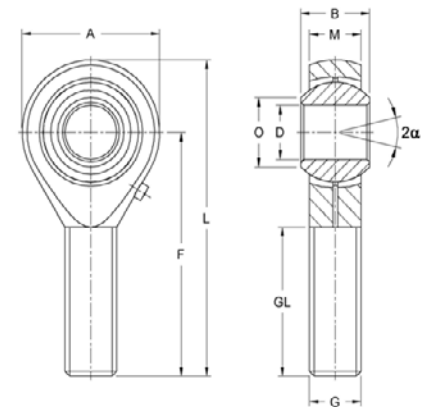
GA Type

Standard Duty, Zinc Plated
Grease Fitting for Re-Lube
Right & Left Hand - External Threads
Suited for Axial Loads

Housing: Sizes 5-12 turned from free-cutting steel to 9SMnPb28K, 12L13
Sizes 14 and up are forged from heat-treated steel to C22, M1023

Insert: Special brass to CuZn40Al1

Ball: Bearing steel 100Cr6 (Aisi 52100), hardened, ground, polished



Right Hand Part No.	Left Hand Part No.	Size D	Dimensions (mm)								Static Load C _o kN	Dynamic Load C kN	Max Speed RPM	Wt. g
			B	M	A	F	L	O	G	GL				
GA 5*	GAL 5*	5	8	6.00	18	33	42	7.7	M5 x .08	20	4.3	2.5	900	13
GA 6	GAL 6	6	9	6.75	20	36	46	8.9	M6 x 1	22	6.0	3.2	760	20
GA 8	GAL 8	8	12	9.00	24	42	54	10.4	M8 x 1.25	25	11.0	5.4	620	33
GA 10	GAL 10	10	14	10.50	28	48	62	12.9	M10 x 1.5	29	17.4	7.5	500	56
GA 12	GAL 12	12	16	12.00	32	54	70	15.4	M12 x 1.75	33	25.5	10.0	450	87
GA 14	GAL 14	14	19	13.50	36	60	78	16.8	M14 x 2	36	24.5	13.0	360	129
GA 16	GAL 16	16	21	15.00	42	66	87	19.3	M16 x 2	40	36.5	16.0	350	189
GA 18	GAL 18	18	23	16.50	46	72	95	21.8	M18 x 1.5	44	43.0	19.5	320	267
GA 20	GAL 20	20	25	18.00	50	78	103	24.3	M20 x 1.5	47	49.5	23.5	280	348
GA 22	GAL 22	22	28	20.00	54	84	111	25.8	M22 x 1.5	51	57.0	29.0	250	443
GA 25	GAL 25	25	31	22.00	60	94	124	29.6	M24 x 2	57	68.0	35.0	230	600

Note: * Without grease fitting.