

Keyless Bushings



KLAA Series

Self Centering

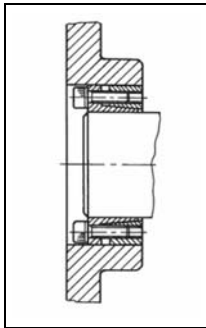
Quick Installation & Removal

Medium to High Torque

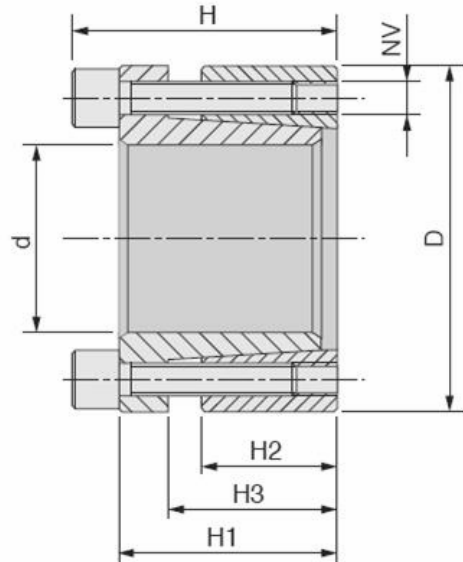
Pre-assembled

Functions as a Press or Shrink Fit

No Loose Set Screws or Keyways



Installed



Material: C45E

Part No.	d	D	H	H1	H2	H3	Mounting Screws			Removal Screws		Max Transmitted		Shaft Pressure Pa (Nmm ²)	Hub Pressure Pm (Nmm ²)	Wt. kg
							NV	Torque (Nm)	Screws	NV	Screws	Torque Mt (Nm)	Thrust Ta (kN)			
KLAA19/47	19	47	34	28	17	22	M6x20	14	5	M6	3	273	29	262	106	0.35
KLAA20/47	20	47	34	28	17	22	M6x20	14	5	M6	3	287	29	249	106	0.30
KLAA22/47	22	47	34	28	17	22	M6x20	14	5	M6	3	316	29	227	106	0.28
KLAA24/50	24	50	34	28	17	22	M6x20	14	6	M6	3	413	34	249	120	0.30
KLAA25/50	25	50	34	28	17	22	M6x20	14	6	M6	3	431	34	239	120	0.30
KLAA28/55	28	55	34	28	17	22	M6x20	14	6	M6	3	482	34	213	109	0.32
KLAA30/55	30	55	34	28	17	22	M6x20	14	6	M6	3	517	34	199	109	0.50
KLAA32/60	32	60	34	28	17	22	M6x20	14	8	M6	4	734	46	249	133	0.45
KLAA35/60	35	60	34	28	17	22	M6x20	14	8	M6	4	803	46	227	133	0.30
KLAA38/65	38	65	34	28	17	22	M6x20	14	8	M6	4	872	46	210	122	0.50
KLAA40/65	40	65	34	28	17	22	M6x20	14	8	M6	4	918	46	199	122	0.40
KLAA45/75	45	75	41	33	20	25	M8x25	35	7	M8	3	1674	74	244	146	0.67
KLAA50/80	50	80	41	33	20	25	M8x25	35	7	M8	3	1860	74	219	137	0.70
KLAA55/85	55	85	41	33	20	25	M8x25	35	8	M8	4	2340	85	228	148	0.80
KLAA60/90	60	90	41	33	20	25	M8x25	35	8	M8	4	2553	85	209	139	0.85
KLAA65/95	65	95	41	33	20	25	M8x25	35	9	M8	3	3110	96	217	149	0.90
KLAA70/110	70	110	50	40	24	30	M10x30	70	8	M10	4	4838	138	243	154	1.50
KLAA75/115	75	115	50	40	24	30	M10x30	70	8	M10	4	5184	138	226	148	2.00
KLAA80/120	80	120	50	40	24	30	M10x30	70	8	M10	4	5530	138	212	142	2.00
KLAA85/125	85	125	50	40	24	30	M10x30	70	9	M10	3	6610	156	225	153	1.90
KLAA90/130	90	130	50	40	24	30	M10x30	70	9	M10	3	6998	156	212	147	2.00
KLAA95/135	95	135	50	40	25	30	M10x30	70	10	M10	4	8208	173	223	157	2.10
KLAA100/145	100	145	56	44	26	32	M12x35	125	8	M12	4	9742	195	221	152	3.00
KLAA110/155	110	155	56	44	26	32	M12x35	125	8	M12	4	10716	195	201	143	3.00
KLAA120/165	120	165	56	44	26	32	M12x35	125	9	M12	4	13154	219	207	151	3.50
KLAA130/180	130	180	64	52	34	40	M12x35	190	12	M12	6	18996	292	195	141	4.50
KLAA140/190	140	190	68	54	34	40	M14x40	190	9	M14	4	20336	291	180	133	5.00
KLAA150/200	150	200	68	54	34	40	M14x40	190	10	M14	5	24211	323	187	140	5.40

Keyless Bushings



KLAB Series

Self Centering

Quick Installation & Removal

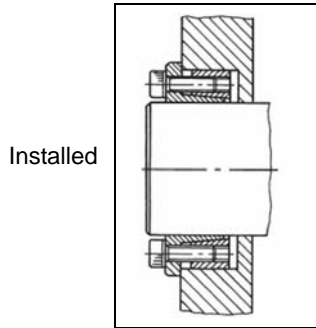
Medium to High Torque

Pre-assembled

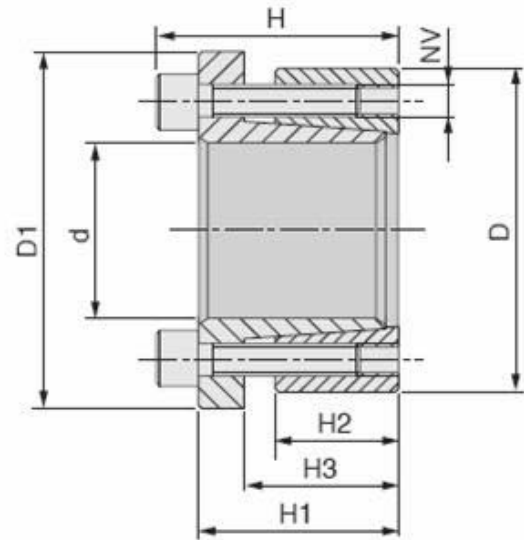
Functions as a Press or Shrink Fit

No Loose Set Screws or Keyways

Positioning Shoulder for Drive Component



Installed



Material: C45E

Part No.	d	D	D1	H	H1	H2	H3	Mounting Screws			Removal Screws		Max Transmitted		Shaft Pressure Pa (Nmm ²)	Hub Pressure Pm (Nmm ²)	Wt. kg
								NV	Torque (Nm)	Screws	NV	Screws	Torque Mt (Nm)	Thrust Ta (kN)			
KLAB19/47	19	47	56	34	28	17	22	M6x20	17	5	M6	3	243	26	234	94	0.30
KLAB20/47	20	47	56	34	28	17	22	M6x20	17	5	M6	3	256	26	222	94	0.30
KLAB22/47	22	47	56	34	28	17	22	M6x20	17	5	M6	3	282	26	202	94	0.30
KLAB24/50	24	50	59	34	28	17	22	M6x20	17	6	M6	3	368	31	222	106	0.35
KLAB25/50	25	50	59	34	28	17	22	M6x20	17	6	M6	3	383	31	213	106	0.33
KLAB28/55	28	55	64	34	28	17	22	M6x20	17	6	M6	3	429	31	190	97	0.40
KLAB30/55	30	55	64	34	28	17	22	M6x20	17	6	M6	3	460	31	177	97	0.40
KLAB32/60	32	60	69	34	28	17	22	M6x20	17	8	M6	4	655	41	222	118	0.45
KLAB35/60	35	60	69	34	28	17	22	M6x20	17	8	M6	4	716	41	203	118	0.40
KLAB38/65	38	65	74	34	28	17	22	M6x20	17	8	M6	4	778	41	187	109	1.00
KLAB40/65	40	65	74	34	28	17	22	M6x20	17	8	M6	4	819	41	178	109	0.40
KLAB45/75	45	75	84	41	33	20	25	M8x25	41	7	M8	3	1458	65	212	127	0.75
KLAB50/80	50	80	89	41	33	20	25	M8x25	41	7	M8	3	1620	65	191	119	0.80
KLAB55/85	55	85	94	41	33	20	25	M8x25	41	8	M8	4	2037	74	199	129	0.80
KLAB60/90	60	90	99	41	33	20	25	M8x25	41	8	M8	4	2223	74	182	121	1.00
KLAB65/95	65	95	104	41	33	20	25	M8x25	41	9	M8	3	2710	83	189	129	1.02
KLAB70/110	70	110	119	50	40	24	30	M10x30	83	8	M10	4	4203	120	211	134	0.70
KLAB75/115	75	115	124	50	40	24	30	M10x30	83	8	M10	4	4754	120	197	128	1.80
KLAB80/120	80	120	129	50	40	24	30	M10x30	83	8	M10	4	4804	120	184	123	2.00
KLAB85/125	85	125	134	50	40	24	30	M10x30	83	9	M10	3	5742	135	195	133	2.10
KLAB90/130	90	130	139	50	40	24	30	M10x30	83	9	M10	3	6080	135	184	128	2.00
KLAB95/135	95	135	144	50	40	25	30	M10x30	83	10	M10	4	7131	150	194	137	2.20
KLAB100/145	100	145	154	56	44	26	32	M12x35	145	8	M12	4	8732	175	198	137	2.85
KLAB110/155	110	155	164	56	44	26	32	M12x35	145	8	M12	4	9605	175	180	128	3.00
KLAB120/165	120	165	174	56	44	26	32	M12x35	145	9	M12	4	11787	196	186	135	3.50
KLAB130/180	130	180	189	64	52	34	40	M12x35	145	12	M12	6	17024	262	175	126	4.90
KLAB140/190	140	190	199	68	54	34	40	M14x40	230	9	M14	4	18703	267	166	122	5.00
KLAB150/200	150	200	209	68	54	34	40	M14x40	230	10	M14	5	22259	297	172	129	5.85

Keyless Bushings



KLBB Series

Self Centering

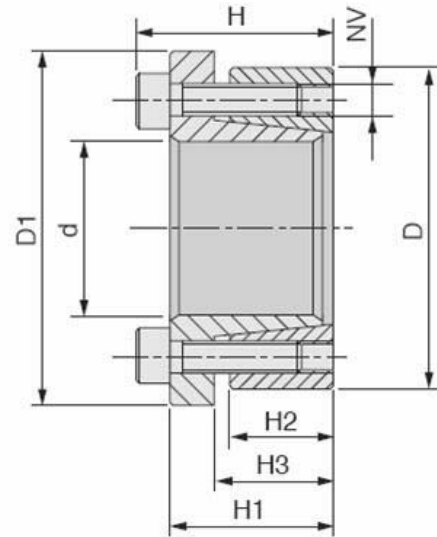
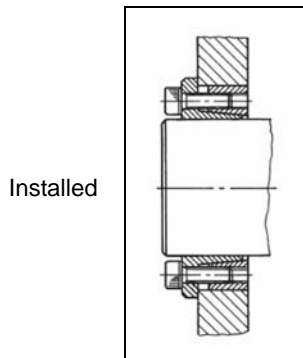
Quick Installation & Removal

Pre-assembled

Functions as a Press or Shrink Fit

No Loose Set Screws or Keyways

Positioning Shoulder for Drive Component



Material: C45E

Part No.	d	D	D1	H	H1	H2	H3	Mounting Screws			Removal Screws		Max Transmitted		Shaft Pressure Pa (Nmm ²)	Hub Pressure Pm (Nmm ²)	Wt. kg
								NV	Torque (Nm)	Screws	NV	Screws	Torque Mt (Nm)	Thrust Ta (kN)			
KLBB14/55	14	55	62	39	31	17	22	M8x25	41	4	M8	2	234	33	415	106	0.50
KLBB16/55	16	55	62	39	31	17	22	M8x25	41	4	M8	2	268	33	363	106	0.50
KLBB18/55	18	55	62	39	31	17	22	M8x25	41	4	M8	2	333	37	357	117	0.50
KLBB19/55	19	55	62	39	31	17	22	M8x25	41	4	M8	2	352	37	338	117	0.50
KLBB20/55	20	55	62	39	31	17	22	M8x25	41	4	M8	2	370	37	321	117	0.50
KLBB22/55	22	55	62	39	31	17	22	M8x25	41	4	M8	2	407	37	292	117	0.45
KLBB24/55	24	55	62	39	31	17	22	M8x25	41	4	M8	2	445	37	268	117	0.45
KLBB25/55	25	55	62	39	31	17	22	M8x25	41	4	M8	2	463	37	257	117	0.45
KLBB28/55	28	55	62	39	31	17	22	M8x25	41	4	M8	2	519	37	229	117	0.41
KLBB30/55	30	55	62	39	31	17	22	M8x25	41	4	M8	2	556	37	214	117	0.60
KLBB24/65	24	65	72	39	31	17	22	M8x25	41	5	M8	3	556	46	335	124	0.65
KLBB25/65	25	65	72	39	31	17	22	M8x25	41	5	M8	3	579	46	321	124	0.40
KLBB28/65	28	65	72	39	31	17	22	M8x25	41	5	M8	3	649	46	287	124	0.60
KLBB30/65	30	65	72	39	31	17	22	M8x25	41	5	M8	3	695	46	268	124	0.60
KLBB32/65	32	65	72	39	31	17	22	M8x25	41	5	M8	3	741	46	251	124	0.60
KLBB33/65	33	65	72	39	31	17	22	M8x25	41	5	M8	3	764	46	242	124	0.60
KLBB35/65	35	65	72	39	31	17	22	M8x25	41	5	M8	3	811	46	230	124	0.60
KLBB38/65	38	65	72	39	31	17	22	M8x25	41	5	M8	3	917	46	211	124	0.50
KLBB40/65	40	65	72	39	31	17	22	M8x25	41	5	M8	3	966	46	201	124	0.50
KLBB30/80	30	80	87	41	33	20	25	M8x25	41	7	M8	3	972	65	318	119	0.95
KLBB32/80	32	80	87	41	33	20	25	M8x25	41	7	M8	3	1037	65	299	119	1.00
KLBB33/80	33	80	87	41	33	20	25	M8x25	41	7	M8	3	1069	65	289	119	1.00
KLBB35/80	35	80	87	41	33	20	25	M8x25	41	7	M8	3	1134	65	273	119	1.10
KLBB38/80	38	80	87	41	33	20	25	M8x25	41	7	M8	3	1231	65	251	119	1.00
KLBB40/80	40	80	87	41	33	20	25	M8x25	41	7	M8	3	1296	65	239	119	1.00
KLBB42/80	42	80	87	41	33	20	25	M8x25	41	7	M8	3	1361	65	227	119	0.90
KLBB45/80	45	80	87	41	33	20	25	M8x25	41	7	M8	3	1458	65	212	119	0.88
KLBB48/80	48	80	87	41	33	20	25	M8x25	41	7	M8	3	1555	65	199	119	0.80
KLBB50/80	50	80	87	41	33	20	25	M8x25	41	7	M8	3	1720	65	191	119	1.00

Keyless Bushings



KLCC Series

Self Centering

Quick Installation & Removal

Medium to High Torque

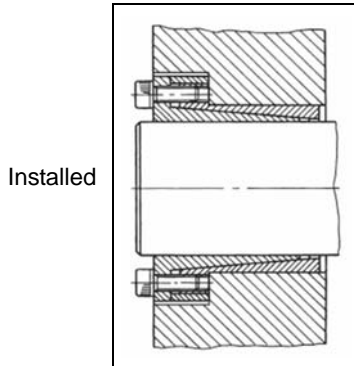
Pre-assembled

Functions as a Press or Shrink Fit

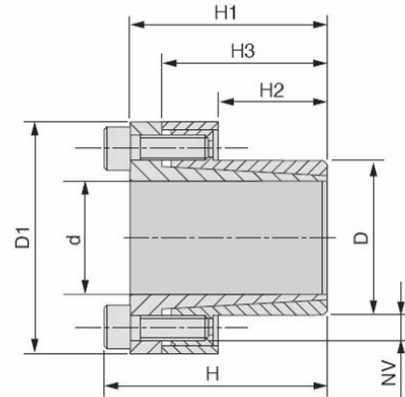
No Loose Set Screws or Keyways

Positioning Shoulder for Drive Component

Allows Max Shaft Diameter in Drive Component



Installed



Material: C45E

Part No.	d	D	D1	H	H1	H2	H3	Mounting Screws			Removal Screws		Max Transmitted		Shaft Pressure Pa (Nmm ²)	Hub Pressure Pm (Nmm ²)	Wt. kg
								NV	Torque (Nm)	Screws	NV	Screws	Torque Mt (Nm)	Thrust Ta (kN)			
KLCC8/15	8	15	28	28	24	12	21	M4x10	5	4	M4	3	39	10	299	159	0.07
KLCC9/16	9	16	31	31	27	14	23	M4x12	5	4	M4	3	44	10	227	128	0.10
KLCC10/16	10	16	32	31	27	14	23	M4x12	5	4	M4	3	49	10	205	128	0.10
KLCC11/18	11	18	34	31	27	14	23	M4x12	5	4	M4	3	53	10	186	114	0.10
KLCC12/18	12	18	34	31	27	14	23	M4x12	5	4	M4	3	58	10	171	114	0.20
KLCC14/23	14	23	39	31	27	14	23	M4x12	5	4	M4	3	68	10	146	89	0.20
KLCC15/24	15	24	45	42	36	16	29	M6x18	17	3	M6	2	120	16	196	123	0.24
KLCC16/24	16	24	45	42	36	16	29	M6x18	17	3	M6	2	128	16	184	123	0.30
KLCC18/26	18	26	47	44	28	18	31	M6x18	17	4	M6	3	191	21	194	134	0.20
KLCC19/27	19	27	48	44	38	18	31	M6x18	17	4	M6	3	202	21	183	129	0.20
KLCC20/28	20	28	49	44	38	18	31	M6x18	17	2	M6	3	213	21	174	124	0.30
KLCC22/32	22	32	54	51	45	25	38	M6x18	17	4	M6	3	234	21	114	78	0.40
KLCC24/34	24	34	56	51	45	25	38	M6x18	17	4	M6	3	255	21	105	74	0.50
KLCC25/34	25	34	56	51	45	25	38	M6-18	17	4	M6	3	266	21	100	74	0.40
KLCC28/39	28	39	61	51	45	25	38	M6-18	17	5	M6	3	373	27	112	81	0.50
KLCC30/41	30	41	63	51	45	25	38	M6x18	17	6	M6	3	480	32	126	92	0.60
KLCC32/43	32	43	65	56	50	30	43	M6x18	17	6	M6	3	511	32	98	73	0.50
KLCC35/47	35	47	69	56	50	30	43	M6x18	17	8	M6	4	747	43	120	89	0.70
KLCC38/50	38	50	72	56	50	30	43	M6x18	17	8	M6	4	811	43	110	84	0.70
KLCC40/53	40	53	75	58	52	32	45	M6x18	17	9	M6	4	959	48	110	83	0.80
KLCC42/55	42	55	77	58	52	32	45	M6x18	17	9	M6	4	1007	48	105	80	0.70
KLCC45/59	45	59	85	72	64	40	56	M8x22	41	8	M8	4	1781	79	130	99	1.10
KLCC48/62	48	62	88	72	64	40	56	M8x22	41	8	M8	4	1900	79	122	94	1.20
KLCC50/65	50	65	92	82	74	50	66	M8x22	41	10	M8	5	2473	99	117	90	1.40
KLCC55/71	55	71	98	82	74	50	66	M8x22	41	10	M8	5	2721	99	106	82	1.50
KLCC60/77	60	77	104	82	74	50	66	M8x22	41	10	M8	5	2968	99	97	76	1.70
KLCC65/84	65	84	111	82	74	50	66	M8x22	41	10	M8	5	3215	99	90	69	2.00
KLCC70/90	70	90	122	101	91	60	80	M10x25	83	8	M10	4	4430	127	89	69	3.00
KLCC75/95	75	95	126	101	91	60	80	M10x25	83	9	M10	4	5338	142	93	74	3.10
KLCC80/100	80	100	131	106	96	65	85	M10x25	83	12	M10	5	7595	190	108	86	3.40
KLCC85/106	85	106	137	106	96	65	85	M10x25	83	12	M10	5	8069	190	101	81	3.65
KLCC90/112	90	112	143	109	96	65	85	M10x25	83	14	M10	6	9968	222	112	90	4.00
KLCC95/120	95	120	153	106	96	65	85	M10x25	83	14	M10	6	10522	222	106	84	4.50
KLCC100/125	100	125	162	114	102	65	89	M12x30	145	12	M12	5	13651	273	124	99	5.50
KLCC110/140	110	140	177	119	107	70	94	M12x30	145	12	M12	5	15016	273	105	82	7.50
KLCC120/155	120	155	195	139	127	90	114	M12x30	145	16	M12	7	21844	364	99	77	10.30
KLCC130/165	130	165	205	139	127	90	114	M12x30	145	16	M12	7	23664	364	92	72	11.00
KLCC140/175	140	175	215	139	127	90	114	M12x30	145	16	M12	7	25485	364	85	68	12.00
KLCC150/185	150	185	225	139	127	90	114	M12x30	145	16	M12	7	27305	364	80	64	13.00

Keyless Bushings



KLDA Series

Self Centering

Quick Installation & Removal

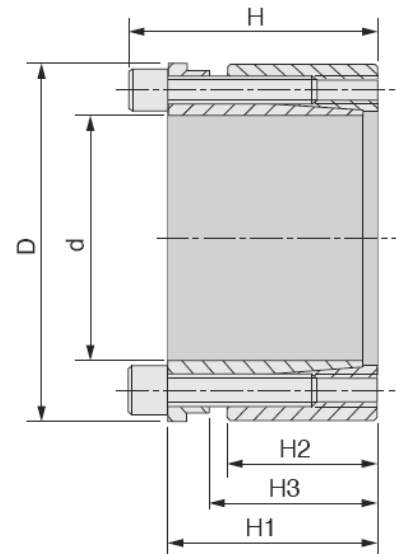
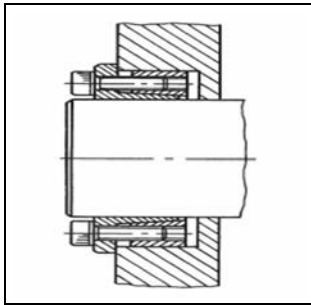
High Torque

Pre-assembled

Functions as a Press or Shrink Fit

No Loose Set Screws or Keyways

Installed



Material: C45E

Part No.	d	D	H	H1	H2	H3	Mounting Screws			Removal Screws		Max Transmitted		Shaft Pressure Pa (Nmm ²)	Hub Pressure Pm (Nmm ²)	Wt. kg
							NV	Torque (Nm)	Screws	NV	Screws	Torque Mt (Nm)	Thrust Ta (kN)			
KLDA19/47	19	47	45	28	17	22	M6x25	17	4	M6	2	307	32	193	78	0.50
KLDA20/47	20	47	45	39	26	31	M6x25	17	4	M6	2	323	32	183	78	0.50
KLDA22/47	22	47	45	39	26	31	M6x25	17	4	M6	2	355	32	166	78	0.20
KLDA24/50	24	50	45	39	26	31	M6x25	17	6	M6	3	382	48	229	110	0.50
KLDA25/50	25	50	45	39	26	31	M6x25	17	6	M6	3	606	48	220	110	0.40
KLDA28/55	28	55	45	39	26	31	M6x25	17	6	M6	3	679	48	196	100	0.50
KLDA30/55	30	55	45	39	26	31	M6x25	17	6	M6	3	727	48	183	100	0.50
KLDA32/60	32	60	45	39	26	31	M6x25	17	8	M6	4	1033	65	229	122	0.60
KLDA35/60	35	60	45	39	26	31	M6x25	17	8	M6	4	1130	65	209	122	0.50
KLDA38/65	38	65	45	39	26	31	M6x25	17	8	M6	4	1227	65	193	113	0.70
KLDA40/65	40	65	45	39	26	31	M6x25	17	8	M6	4	1292	65	183	113	0.50
KLDA42/75	42	75	55	47	30	36	M8x30	41	6	M8	3	1835	87	204	115	1.00
KLDA45/75	45	75	55	47	30	36	M8x30	41	6	M8	3	1966	87	191	115	1.00
KLDA48/80	48	80	55	47	30	36	M8x30	41	6	M8	3	2097	87	179	107	1.20
KLDA50/80	50	80	55	47	30	36	M8x30	41	6	M8	3	2184	87	172	107	1.20
KLDA55/85	55	85	55	47	30	36	M8x30	41	8	M8	4	3202	116	208	135	1.10
KLDA60/90	60	90	55	47	30	36	M8x30	41	8	M8	4	3493	116	191	127	1.20
KLDA65/95	65	95	55	47	30	36	M8x30	41	8	M8	4	3784	116	176	120	1.30
KLDA70/110	70	110	67	57	40	46	M10x35	83	8	M10	4	6607	189	199	127	2.70
KLDA75/115	75	115	72	62	70	46	M10x35	83	8	M10	4	7079	189	186	121	2.59
KLDA80/120	80	120	72	62	40	46	M10x35	83	8	M10	4	7551	189	174	116	2.75
KLDA85/125	85	125	72	62	40	46	M10x35	83	10	M10	4	10029	236	205	139	2.80
KLDA90/130	90	130	72	62	40	46	M10x35	83	10	M10	4	10619	236	193	134	3.04
KLDA95/135	95	135	72	62	40	46	M10x35	83	10	M10	4	11209	236	183	129	3.10
KLDA100/145	100	145	89	77	46	52	M12x45	145	8	M12	4	13738	275	176	121	4.69
KLDA110/155	110	155	89	77	46	52	M12x45	145	8	M12	4	15111	278	160	114	5.09
KLDA120/165	120	165	89	77	46	52	M12x45	145	10	M12	4	20606	343	183	133	5.50
KLDA130/180	130	180	89	77	46	52	M12x45	145	12	M12	4	26788	412	203	147	6.80
KLDA140/190	140	190	98	84	51	59	M14x45	230	8	M14	4	26142	373	154	114	7.55
KLDA150/200	150	200	98	84	51	59	M14x45	230	10	M14	5	35016	467	180	135	8.00

Keyless Bushings



KLDB Series

Self Centering

Quick Installation & Removal

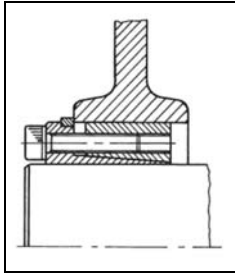
High Torque

Pre-assembled

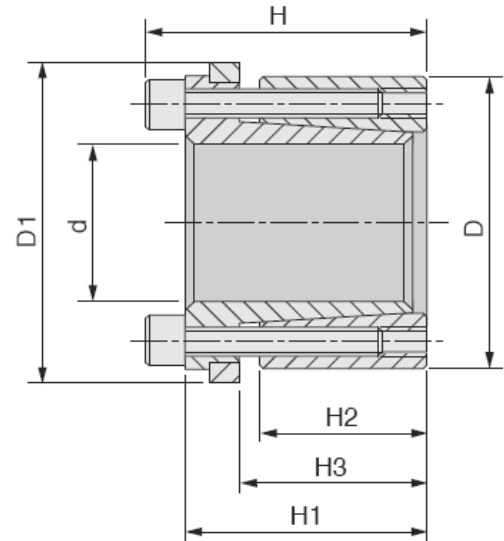
Functions as a Press or Shrink Fit

No Loose Set Screws or Keyways

Positioning Shoulder for Drive Component



Installed



Material: C45E

Part No.	d	D	D1	H	H1	H2	H3	Mounting Screws			Removal Screws		Max Transmitted		Shaft Pressure Pa (Nmm ²)	Hub Pressure Pm (Nmm ²)	Wt. kg
								NV	Torque (Nm)	Screws	NV	Screws	Torque Mt (Nm)	Thrust Ta (kN)			
KLDB19/47	19	47	53	45	39	26	31	M6x20	17	4	M6	2	202	21	127	51	0.5
KLDB20/47	20	47	53	45	39	26	31	M6x20	17	4	M6	2	213	21	121	51	0.4
KLDB22/47	22	47	53	45	39	26	31	M6x20	17	4	M6	2	234	21	110	51	0.4
KLDB24/50	24	50	56	45	39	26	31	M6x20	17	6	M6	3	384	32	151	73	0.45
KLDB25/50	25	50	56	45	39	26	31	M6x20	17	6	M6	3	400	32	145	73	0.4
KLDB28/55	28	55	61	45	39	26	31	M6x20	17	6	M6	3	448	32	129	66	0.5
KLDB30/55	30	55	61	45	39	26	31	M6x20	17	6	M6	3	480	32	121	66	0.5
KLDB32/60	32	60	66	45	39	26	31	M6x20	17	8	M6	4	683	43	151	81	0.55
KLDB35/60	35	60	66	45	39	26	31	M6x20	17	8	M6	4	747	43	138	81	0.5
KLDB38/65	38	65	71	45	39	26	31	M6x20	17	8	M6	4	811	43	127	74	0.6
KLDB40/65	40	65	71	45	39	26	31	M6x20	17	8	M6	4	853	43	121	74	0.6
KLDB42/75	42	75	81	55	47	30	36	M8x30	41	6	M8	3	1216	58	135	76	1.0
KLDB45/75	45	75	81	55	47	30	36	M8x30	41	6	M8	3	1302	58	126	76	0.9
KLDB48/80	48	80	86	55	47	30	36	M8x30	41	6	M8	3	1389	58	119	71	0.65
KLDB50/80	50	80	86	55	47	30	36	M8x30	41	6	M8	3	1447	58	114	71	1.5
KLDB55/85	55	85	91	55	47	30	36	M8x30	41	8	M8	4	2124	77	138	89	1.05
KLDB60/90	60	90	96	55	47	30	36	M8x30	41	8	M8	4	2317	77	127	84	1.2
KLDB65/95	65	95	101	55	47	30	36	M8x30	41	8	M8	4	2510	77	117	80	1.3
KLDB70/110	70	110	116	67	57	40	46	M10x35	83	8	M10	4	4381	125	132	84	2.3
KLDB75/115	75	115	121	72	62	40	46	M10x35	83	8	M10	4	4694	125	123	80	3.0
KLDB80/120	80	120	126	72	62	40	46	M10x35	83	8	M10	4	5007	125	115	77	2.8
KLDB85/125	85	125	131	72	62	40	45	M10x35	83	10	M10	4	6651	156	136	92	3.0
KLDB90/130	90	130	136	72	62	40	46	M10x35	83	10	M10	4	7042	156	128	89	3.0
KLDB95/135	95	135	141	72	62	40	46	M10x35	83	10	M10	4	7433	156	121	85	3.2
KLDB100/145	100	145	151	89	77	46	52	M12x45	145	8	M12	4	9104	182	117	81	4.5
KLDB110/155	110	155	161	89	77	46	52	M12x45	145	8	M12	4	10015	182	106	75	5.5
KLDB120/165	120	165	171	89	77	46	52	M12x45	145	10	M12	4	13653	228	122	88	5.6
KLDB130/180	130	180	186	89	77	46	52	M12x45	145	12	M12	4	17747	273	135	97	7.0
KLDB140/190	140	190	196	98	84	51	59	M14x45	230	8	M14	4	17328	248	102	75	7.8
KLDB150/200	150	200	206	98	84	51	59	M14x45	230	10	M14	5	23207	309	119	89	8.15

Keyless Bushings



KLEE Series

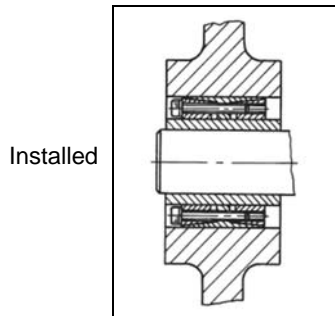
Self Centering

High Torque

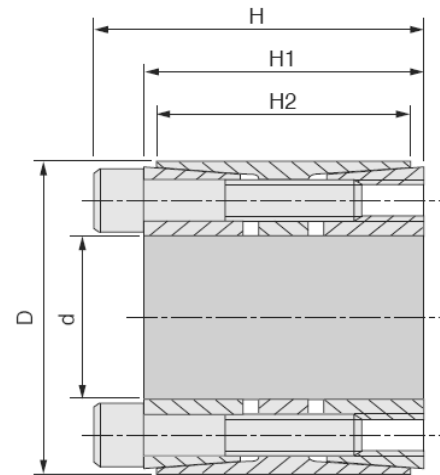
Pre-assembled

Functions as a Press or Shrink Fit

No Loose Set Screws or Keyways



Installed



Material: C45E

Part No.	d	D	H	H1	H2	Mounting Screws			Removal Screws		Max Transmitted		Shaft Pressure Pa (Nmm ²)	Hub Pressure Pm (Nmm ²)	Wt. kg
						NV	Torque (Nm)	Screws	NV	Screws	Torque Mt (Nm)	Thrust Ta (kN)			
KLEE25/55	25	55	46	40	32	M6x35	17	6	M6	3	799	64	314	107	0.5
KLEE28/55	28	55	46	40	32	M6x35	17	6	M6	3	895	64	281	107	0.45
KLEE30/55	30	55	46	40	32	M6x35	17	6	M6	3	959	64	262	107	0.5
KLEE35/60	35	60	60	54	44	M6x45	41	7	M6	3	1306	75	185	83	0.7
KLEE38/75	38	75	62	54	44	M8x50	41	7	M8	3	2567	135	308	121	1.1
KLEE40/75	40	75	62	54	44	M8x50	41	7	M8	3	2702	135	293	121	1.15
KLEE42/75	42	75	62	54	44	M8x50	41	7	M8	3	2837	135	279	121	1.02
KLEE45/75	45	75	62	54	44	M8x50	41	7	M8	3	3040	135	260	121	1.05
KLEE48/80	48	80	72	64	56	M8x55	41	8	M8	4	3707	154	216	102	1.30
KLEE50/80	50	80	72	64	56	M8x55	41	8	M8	4	3861	154	207	102	1.30
KLEE55/85	55	85	72	64	56	M8x55	41	9	M8	4	4779	174	212	108	1.50
KLEE60/90	60	90	72	64	56	M8x55	41	10	M8	4	5793	193	216	113	1.50
KLEE65/95	65	95	72	64	56	M8x55	41	10	M8	4	6276	193	199	107	1.65
KLEE70/110	70	110	88	78	70	M10x60	83	10	M10	4	10951	313	235	120	2.9
KLEE75/115	75	115	88	78	70	M10x60	83	10	M10	4	11733	313	220	115	3.1
KLEE80/120	80	120	88	78	70	M10x60	83	11	M10	4	13768	344	227	121	3.2
KLEE85/125	85	125	88	78	70	M10x60	83	12	M10	5	15959	376	233	127	3.4
KLEE90/130	90	130	88	78	70	M10x60	83	12	M10	5	16898	376	220	122	3.6
KLEE95/135	95	135	88	78	70	M10x60	83	12	M10	5	17837	376	208	117	3.6
KLEE100/145	100	145	112	100	90	M12x80	145	12	M12	4	25029	501	211	113	5.9
KLEE110/155	110	155	112	100	90	M12x80	145	12	M12	5	30039	546	209	115	6.2
KLEE120/165	120	165	112	100	90	M12x80	145	14	M12	6	38226	637	224	127	6.50
KLEE130/180	130	180	130	116	104	M14x90	230	12	M14	5	48270	743	201	117	9.6
KLEE140/190	140	190	130	116	104	M14x90	230	14	M14	7	60654	866	217	129	10.0
KLEE150/200	150	200	130	116	104	M14x90	230	15	M14	7	69628	928	217	132	10.52
KLEE160/210	160	210	130	116	104	M14x90	230	16	M14	7	79220	990	217	134	11.10
KLEE170/225	170	225	164	148	134	M16x120	360	14	M16	7	100851	1186	206	116	16.5
KLEE180/235	180	235	164	148	134	M16x120	360	15	M16	7	114414	1271	208	119	17.0
KLEE190/250	190	250	164	148	134	M16x120	360	16	M16	7	128814	1356	210	119	18.0
KLEE200/260	200	260	164	148	134	M16x120	360	16	M16	7	135594	1356	200	115	21.0
KLEE220/285	220	285	164	148	134	M16x120	360	18	M16	8	167805	1526	204	118	24.9

Keyless Bushings



KLFF Series

Self Centering Adapter Mount

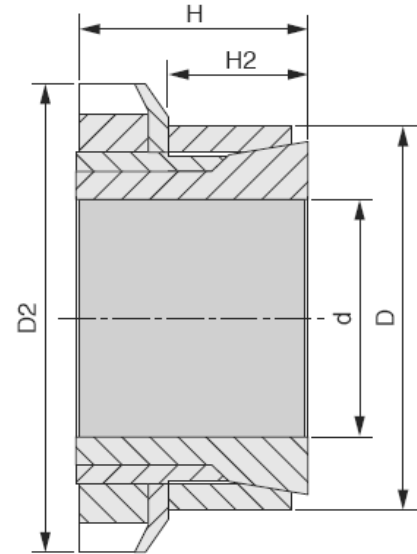
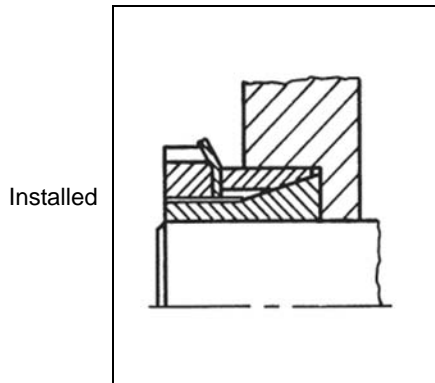
Low to Medium Torque

Pre-assembled, Tighten Nut

Functions as a Press or Shrink Fit

No Loose Set Screws or Keyways

Tighten Nut & Bend Lock Washer Tab to Secure



Material: C45E

Part No.	d	D	D1	D2	H	H2	Lock Nut		Max Transmitted		Shaft Pressure Ta (kN)	Hub Pressure Pm (Nmm ²)	Wt. kg
							NV	TV Torque (Nm)	Torque Mt (Nm)	Thrust Pa (N/mm ²)			
KLFF15/25	15	25	32	34	21	20	M20x1	95	77	91	9	55	0.10
KLFF18/30	18	30	38	41	33	21	M25x1.5	160	125	98	13	59	0.15
KLFF19/30	19	30	38	41	33	21	M25x1.5	160	132	93	13	59	0.20
KLFF20/30	20	30	38	41	33	21	M25x1.5	160	139	88	13	59	0.20
KLFF24/35	24	35	45	48	38	25	M30x1.5	220	202	74	15	51	0.20
KLFF25/35	25	35	45	48	38	25	M30x1.5	220	210	71	15	51	0.20
KLFF28/40	28	40	52	55	44	28	M35x1.5	340	312	76	20	53	0.30
KLFF30/40	30	40	52	55	44	28	M35x1.5	340	335	71	20	53	0.20
KLFF35/45	35	45	58	61	45	28	M40x1.5	480	483	75	25	58	0.30
KLFF40/50	40	50	65	67	46	28	M45x1.5	680	696	82	31	66	0.35
KLFF45/55	45	55	70	73	47	28	M50x1.5	870	902	84	36	69	0.40
KLFF50/60	50	60	75	81	47	28	M55x2	970	1014	77	37	64	0.40
KLFF55/65	55	65	80	87	48	28	M60x2	1100	1159	73	38	61	0.45
KLFF60/70	60	70	85	93	50	28	M65x2	1300	1379	73	41	62	0.60

Keyless Bushings



KLGG Series

Not Self Centering

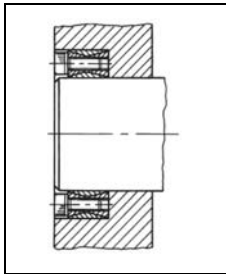
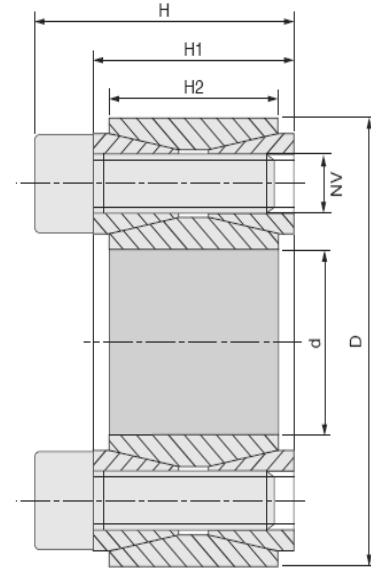
Quick Installation & Removal

Medium to High Torque

Pre-assembled

Functions as a Press or Shrink Fit

No Loose Set Screws or Keyways



Installed



Material: C45E

Part No.	d	D	H	H1	H2	Mounting Screws			Removal Screws		Max Transmitted		Shaft Pressure Pa (Nmm ²)	Hub Pressure Pm (Nmm ²)	Wt. kg
						NV	Torque (Nm)	Screws	NV	Screws	Torque Mt (Nm)	Thrust Ta (kN)			
KLGG19/47	19	47	26	20	17	M6x18	14	8	M8	2	298	31	286	116	0.25
KLGG20/47	20	47	26	20	17	M6x18	14	8	M8	2	313	31	272	116	0.30
KLGG22/47	22	47	26	20	17	M6x18	14	8	M8	2	345	31	247	116	0.20
KLGG24/50	24	50	26	20	17	M6x18	14	9	M8	3	424	35	255	123	0.21
KLGG25/50	25	50	26	20	17	M6x18	14	9	M8	3	441	35	245	123	0.30
KLGG28/55	28	55	26	20	17	M6x18	14	10	M8	3	549	39	243	124	0.30
KLGG30/55	30	55	26	20	17	M6x18	14	10	M8	3	588	39	227	124	0.40
KLGG32/60	32	60	26	20	17	M6x18	14	12	M8	4	758	47	255	136	0.30
KLGG35/60	35	60	26	20	17	M6x18	14	12	M8	4	822	47	233	136	0.30
KLGG38/65	38	65	26	20	17	M6x18	14	14	M8	4	1042	55	250	146	0.40
KLGG40/65	40	65	26	20	17	M6x18	14	14	M8	4	1097	55	238	146	0.40
KLGG42/75	42	75	32	24	20	M8x22	35	12	M10	4	1740	83	291	163	0.59
KLGG45/75	45	75	32	24	20	M8x22	35	12	M10	4	1864	83	271	163	0.60
KLGG48/80	48	80	32	24	20	M8x22	35	12	M10	4	1988	83	254	153	0.50
KLGG50/80	50	80	32	24	20	M8x22	35	12	M10	4	2071	83	244	153	0.70
KLGG55/85	55	85	32	24	20	M8x22	35	14	M10	4	2658	97	259	168	0.80
KLGG60/90	60	90	32	24	20	M8x22	35	14	M10	4	2900	64	238	158	0.80
KLGG65/95	65	95	32	24	20	M8x22	35	16	M10	4	3587	110	250	171	0.90
KLGG70/110	70	110	38	28	24	M10x25	70	14	M12	4	5345	153	268	171	1.50
KLGG75/115	75	115	38	28	24	M10x25	70	14	M12	4	5727	153	250	163	1.30
KLGG80/120	80	120	38	28	24	M10x25	70	14	M12	4	6108	153	235	156	1.50
KLGG85/125	85	125	38	28	24	M10x25	70	16	M12	4	7417	175	252	172	1.50
KLGG90/130	90	130	38	28	24	M10x25	70	16	M10	4	7854	175	238	165	1.50
KLGG95/135	95	135	38	28	24	M10x25	70	18	M12	4	9326	196	254	179	1.50
KLGG100/145	100	145	45	33	26	M12x30	125	14	M14	4	11362	227	258	178	2.20
KLGG110/155	110	155	45	33	26	M12x30	125	14	M14	4	12498	227	234	166	2.40
KLGG120/165	120	165	45	33	26	M12x30	125	16	M14	4	15578	260	245	178	2.50
KLGG130/180	130	180	50	38	34	M12x35	125	20	M14	4	21095	325	217	156	3.50
KLGG140/190	140	190	50	38	34	M12x35	125	22	M14	4	24993	357	221	163	3.70
KLGG150/200	150	200	50	38	34	M12x35	125	24	M14	4	29217	390	225	169	4.00
KLGG160/210	160	210	50	38	34	M12x35	125	26	M14	4	33756	422	229	174	4.20
KLGG170/225	170	225	58	44	38	M14x40	190	22	M16	4	39583	465	212	160	5.50
KLGG180/235	180	235	58	44	38	M14x40	190	24	M16	4	45606	507	218	167	5.90
KLGG190/250	190	250	66	52	46	M14x45	190	28	M16	4	56163	591	199	152	8.00
KLGG200/260	200	260	66	52	46	M14x45	190	30	M16	4	63342	633	203	156	8.40

Keyless Bushings



KLHH Series

Not Self Centering

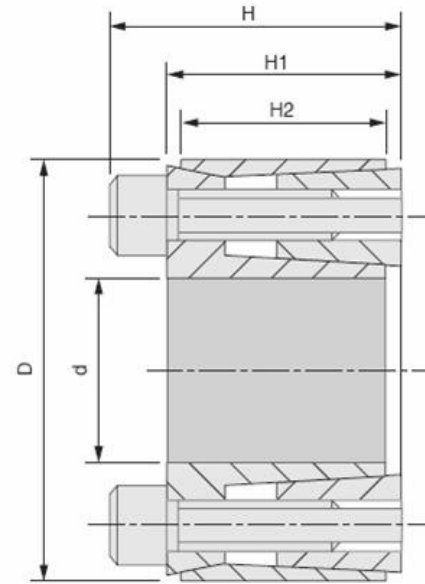
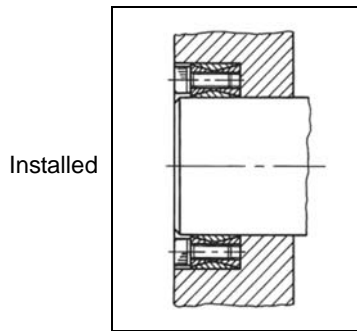
Quick Installation & Removal

Medium to Low Torque

Pre-assembled

Functions as a Press or Shrink Fit

No Loose Set Screws or Keyways



Material: C45E

Part No.	d	D	H	H1	H2	Mounting Screws			Removal Screws		Max Transmitted		Shaft Pressure Pa (Nmm ²)	Hub Pressure Pm (Nmm ²)	Wt. kg
						NV	Torque (Nm)	Screws	NV	Screws	Torque Mt (Nm)	Thrust Ta (kN)			
KLHH18/40	18	40	24	18	14.7	M6x16	17	4	M6	2	165	18	185	83	0.15
KLHH19/41	19	41	24	18	14.7	M6x16	17	4	M6	2	174	18	176	81	0.15
KLHH20/42	20	42	24	18	14.7	M6x16	17	4	M6	2	183	18	167	79	0.10
KLHH24/46	24	46	24	18	14.7	M6x16	17	6	M6	3	329	27	209	109	0.20
KLHH25/47	25	47	24	18	14.7	M6x16	17	6	M6	3	343	27	200	106	0.20
KLHH28/50	28	50	24	18	14.7	M6x16	17	6	M6	3	384	27	179	100	0.20
KLHH30/52	30	52	24	18	14.7	M6x16	17	6	M6	3	412	27	167	96	0.20
KLHH35/57	35	57	28	22	18	M6x18	17	6	M6	3	480	27	117	78	0.20
KLHH38/60	38	60	28	22	18	M6x18	17	8	M6	4	695	37	143	91	0.25
KLHH40/62	40	62	28	22	18	M6x18	17	8	M6	4	732	37	136	88	0.30
KLHH42/70	42	70	36	28	23.5	M8x25	42	8	M8	4	1427	68	185	111	0.50
KLHH45/73	45	73	36	28	23.5	M8x25	42	8	M8	4	1529	68	172	106	0.55
KLHH48/76	48	76	36	28	23.5	M8x25	42	8	M8	4	1631	38	161	102	0.55
KLHH50/78	50	78	36	28	23.5	M8x25	42	8	M8	4	1699	68	155	99	0.60
KLHH55/83	55	83	36	28	23.5	M8x25	42	8	M8	4	1869	68	141	93	0.55
KLHH60/88	60	88	36	28	23.5	M8x25	42	8	M8	4	2039	68	129	88	0.60
KLHH70/110	70	105	45	35	30	M10x30	83	8	M10	4	3759	107	137	91	1.12
KLHH80/115	80	115	45	35	30	M10x30	83	8	M10	4	4296	107	120	83	1.30

Keyless Bushings



KLMM Series

Not Self Centering

Quick Installation & Removal

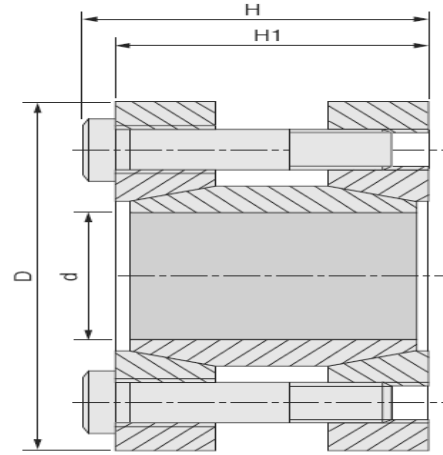
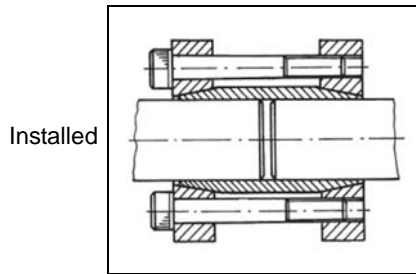
Medium to High Torque

Pre-assembled

Functions as a Press or Shrink Fit

No Loose Set Screws or Keyways

Can be Applied as a Rigid Coupling



Material: C45E

Part No.	d	D	H	H1	H2	H3	Mounting Screws			Max Transmitted		Shaft Pressure Pa (Nmm ²)	Wt. kg
							NV	Torque (Nm)	Screws	Torque Mt (Nm)	Thrust Ta (kN)		
KLMM17/50	17	50	56	50	16	44	M6x45	17	4	179	21	166	0.50
KLMM18/50	18	50	56	50	16	44	M6x45	17	4	190	21	157	0.51
KLMM19/50	19	50	56	50	16	44	M6x45	17	4	200	21	149	0.50
KLMM20/50	20	50	56	50	16	44	M6x45	17	4	211	21	141	0.50
KLMM24/55	24	55	66	60	18.5	54	M6x55	17	6	378	32	144	0.70
KLMM25/55	25	55	66	60	18.5	54	M6x55	17	6	394	32	138	0.70
KLMM28/60	28	60	66	60	18.5	54	M6x55	17	6	442	32	123	0.75
KLMM30/60	30	60	66	60	18.5	54	M6x55	17	6	473	32	115	0.50
KLMM32/63	32	63	66	60	18.5	54	M6x55	17	6	505	32	108	0.90
KLMM35/75	35	75	83	75	22	67	M8x70	42	4	682	39	98	2.50
KLMM38/75	38	75	83	75	22	67	M8x70	42	4	741	39	90	1.40
KLMM40/75	40	75	83	75	22	67	M8x70	42	4	780	39	86	1.40
KLMM42/78	42	78	83	75	22	67	M8x70	42	4	819	39	82	1.40
KLMM45/85	45	85	93	85	24.5	76	M8x80	42	6	1317	59	101	2.00
KLMM48/90	48	90	93	85	24.5	76	M8x80	42	6	1405	59	95	2.20
KLMM50/90	50	90	93	85	24.5	76	M8x80	42	6	1463	59	91	2.10
KLMM55/94	55	94	93	85	24.5	76	M8x80	42	8	2147	78	110	2.20
KLMM60/100	60	100	93	85	24.5	76	M8x80	42	8	2343	78	101	2.50
KLMM65/105	65	105	93	85	24.5	76	M8x80	42	8	2538	78	93	2.50
KLMM70/115	70	115	110	100	29	90	M10x95	83	8	4321	123	116	3.80

Keyless Bushings



KLNN Series

Not Self Centering

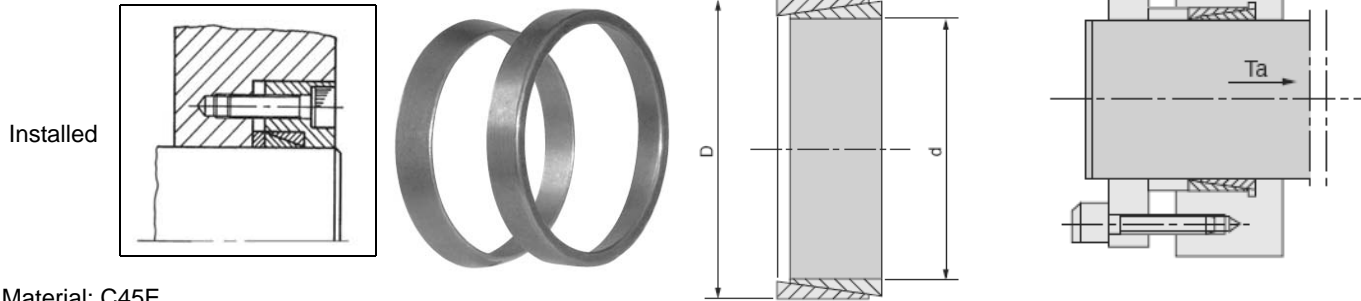
Quick Installation & Removal

Medium to High Torque

Minimum Radial Thickness Allows for Max Shaft

Functions as a Press or Shrink Fit

No Loose Set Screws or Keyways



Material: C45E

Part No.	d	D	H	H2	Max Allowable	Max Transmitted	Max Allowable	Shaft Pressure Pa (Nmm ²)	Hub Pressure Pm (Nmm ²)	Wt. kg
					Force Ta (kN)	Torque Mt (Nm)	Force Tm (Nm)			
KLNN8/11	8	11	4.5	3.7	1.1	4.2	5.0	100	70	0.001
KLNN9/12	9	12	4.5	3.7	1.3	5.8	13.3	100	79	0.002
KLNN10/13	10	13	4.5	3.7	1.5	7.6	14.4	100	86	0.002
KLNN12/15	12	15	4.5	3.7	1.7	9.9	14.5	100	80	0.002
KLNN14/18	14	18	6.3	5.3	2.7	18.9	23.8	100	77	0.004
KLNN15/19	15	19	6.3	5.3	2.9	22.1	24.5	100	79	0.01
KLNN16/20	16	20	6.3	5.3	3.2	25.4	24.5	100	81	0.01
KLNN18/22	18	22	6.3	5.3	3.5	31.8	25.3	100	82	0.01
KLNN19/24	19	24	6.3	5.3	3.8	35.8	29.7	100	80	0.01
KLNN20/25	20	25	6.3	5.3	3.9	38.8	30.1	100	79	0.01
KLNN22/26	22	26	6.3	5.3	4.4	47.9	28.9	100	86	0.01
KLNN24/28	24	28	6.3	5.3	4.7	56.4	30.0	100	86	0.01
KLNN25/30	25	30	6.3	5.3	4.9	61.7	32.4	100	84	0.01
KLNN28/32	28	32	6.3	5.3	5.5	77.4	32.6	100	88	0.01
KLNN30/35	30	35	6.3	5.3	5.9	88.2	35.5	100	86	0.01
KLNN32/36	32	36	6.3	5.3	6.2	100.0	37.0	100	88	0.05
KLNN35/40	35	40	7.0	6.0	7.8	136.0	46.0	100	88	0.01
KLNN38/44	38	44	7.0	6.0	8.5	161.0	50.0	100	87	0.02
KLNN40/45	40	45	8.0	6.6	9.8	195.0	59.0	100	89	0.02
KLNN42/48	42	48	8.0	6.6	10.2	215.0	63.0	100	87	0.02
KLNN45/52	45	52	10.0	8.6	14.3	323.0	92.0	100	87	0.04
KLNN48/55	48	55	10.0	8.6	15.3	367.0	95.0	100	88	0.04
KLNN50/57	50	57	10.0	8.6	15.9	397.0	97.0	100	88	0.5
KLNN55/62	55	62	10.0	8.6	17.4	479.0	102.0	100	88	0.05
KLNN60/68	60	68	12.0	10.4	23.0	691.0	133.0	100	88	0.07
KLNN65/73	65	73	12.0	10.4	25.0	814.0	140.0	100	89	0.08
KLNN70/79	70	79	14.0	12.2	32.0	1107.0	176.0	100	89	0.10
KLNN75/84	75	84	14.0	12.2	34.0	1266.0	190.0	100	89	0.12
KLNN80/91	80	91	17.0	15.0	44.0	1769.0	251.0	100	89	0.20
KLNN90/101	90	101	17.0	15.0	50.0	2240.0	272.0	100	89	0.21
KLNN100/114	100	114	21.0	18.7	70.0	3452.0	378.0	100	89	0.37
KLNN110/124	110	124	21.0	18.7	76.0	4178.0	415.0	100	89	0.40
KLNN120/134	120	134	21.0	18.7	83.0	4967.0	440.0	100	89	0.45
KLNN130/148	130	148	28	25.3	122.0	7896.0	654.0	100	89	0.85
KLNN140/158	140	158	28	25.3	131.0	9146.0	689.0	100	89	0.90
KLNN150/168	150	168	28	25.3	140.0	10505.0	727.0	100	89	1.00

Keyless Bushings



KLPP Series

Not Self Centering

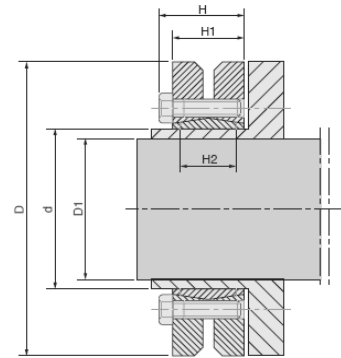
Quick Installation & Removal

Medium to Low Torque

Pre-assembled

Functions as a Press or Shrink Fit

No Loose Set Screws or Keyways



Material: C45E

Part No.	d	D	D1	H	H1	H2	Mounting Screws			Max Transmitted		Shaft Pressure Pa (Nmm ²)	Wt. kg
							NV	Torque (Nm)	Screws	Torque Mt (Nm)	Thrust Ta (kN)		
KLPP24/50	24	50	19	23	19.5	14	M5x18	4	6	216	23	286	0.20
			20							27			
			21							30			
KLPP30/60	30	60	24	25	21.5	16	M5x18	4	7	372	31	233	0.25
			25							34			
			26							36			
KLPP36/72	36	72	26	27.5	23.5	18	M6x20	12	5	471	36.3	307	0.50
			28							39.3			
			30							47.5			
KLPP44/48	44	48	32	29.5	25.5	20	M6x20	12	7	925	57.8	317	0.60
			35							67.1			
			36							70.8			
KLPP50/90	50	90	38	31.5	27.5	22	M6x25	12	8	1313	69.1	289	0.87
			40							81.9			
			42							91.7			
KLPP55/100	55	100	42	34.5	30.5	23	M6x25	12	8	1450	69	252	1.15
			45							84.4			
			48							97.9			
KLPP62/110	62	110	48	34.5	30.5	23	M6x25	12	10	2775	116	279	1.50
			50							131			
			52							139			
KLPP68/115	68	115	50	34.5	30.5	23	M6x25	12	10	2500	100	255	1.40
			55							114			
			60							131			
KLPP75/138	75	138	55	37.8	32.5	25	M8x30	30	7	3125	114	273	2.00
			60							133			
			65							152			
KLPP80/145	80	145	60	37.8	32.5	25	M8x30	30	7	4000	133	256	2.60
			65							150			
			70							164			
KLPP90/155	90	155	65	44.3	39.0	30	M8x35	30	10	5938	183	271	3.50
			70							214			
			75							242			
KLPP100/170	100	170	70	49.3	44.0	34	M8x35	30	12	8625	246	258	4.50
			75							250			
			80							281			
KLPP110/185	110	185	75	56.4	50.0	39	M10x40	59	9	9000	240	244	6.10
			80							281			
			85							318			
KLPP125/215	125	215	85	60.4	54.0	42	M10x40	59	12	13750	324	266	8.85
			90							361			
			95							395			
KLPP140/230	140	230	95	68.0	60.5	46	M12x45	100	10	18875	397	264	10.85
			100							440			
			105							479			
KLPP155/265	155	265	105	72.0	64.5	50	M12x50	100	12	27500	524	263	16.00
			110							568			
			115							609			
KLPP165/290	165	290	115	81.0	71.0	56	M16x55	250	8	38750	674	377	22.05
			120							729			
			125							780			

Note: *Unit will accommodate the listed shaft diameters.

Keyless Bushings



KLRR Series

Self Centering

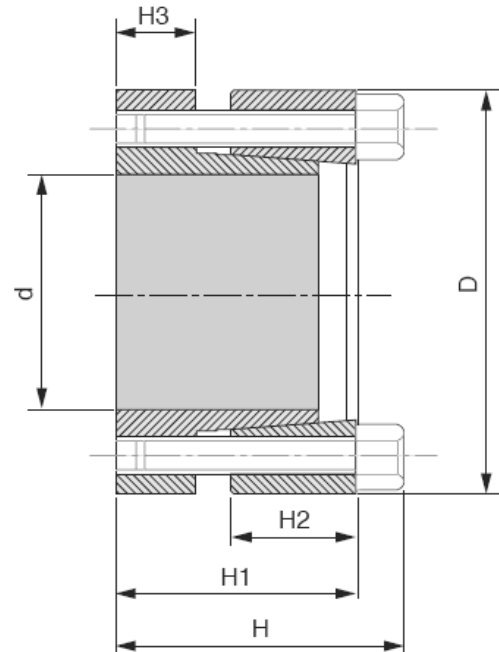
Quick Installation & Removal

Medium to High Torque

Pre-assembled

Functions as a Press or Shrink Fit

No Loose Set Screws or Keyways



Material: C45E

Part No.	d	D	H	H1	H2	H3	Mounting Screws			Removal Screws		Max Transmitted		Shaft Pressure Pa (Nmm ²)	Hub Pressure Pm (Nmm ²)	Wt. kg
							NV	Torque (Nm)	Screws	NV	Screws	Torque Mt (Nm)	Thrust Ta (kN)			
KLRR20/47	20	47	34	28	14	10	M6x25	17	5	M6x25	3	294	29	328	139	0.31
KLRR22/47	22	47	34	28	14	10	M6x25	17	5	M6x25	3	455	38	353	169	0.29
KLRR24/50	24	50	34	28	14	10	M6x25	17	6	M6x25	3	455	38	353	169	0.32
KLRR25/50	25	50	34	28	14	10	M6x25	17	6	M6x25	3	474	38	338	169	0.32
KLRR30/55	30	55	34	28	14	10	M6x25	17	6	M6x25	3	569	38	282	154	0.36
KLRR35/60	35	60	34	28	14	10	M6x25	17	8	M6x25	4	885	51	322	188	0.38
KLRR38/65	38	65	34	28	14	10	M6x25	17	8	M6x25	4	961	51	297	174	0.42
KLRR40/65	40	65	34	28	14	10	M6x25	17	8	M6x25	4	1012	51	282	174	0.44
KLRR42/75	42	75	43	35	18	12	M8x30	41	7	M8x30	4	1594	76	313	176	0.76
KLRR45/75	45	75	43	35	18	12	M8x30	41	7	M8x30	4	1707	76	293	176	0.71
KLRR50/80	50	80	43	35	18	12	M8x30	41	7	M8x30	4	1897	76	263	165	0.78
KLRR55/85	55	85	43	35	18	12	M8x30	41	8	M8x30	4	2387	87	274	177	0.83
KLRR60/90	60	90	43	35	18	12	M8x30	41	8	M8x30	4	2604	87	251	167	0.90
KLRR65/95	65	95	43	35	18	12	M8x30	41	9	M8x30	4	3172	98	260	178	0.96
KLRR70/110	70	110	56	46	24	16	M10x40	83	8	M10x40	4	4937	141	262	167	1.71

Keyless Bushings



KLSS Series

Self Centering

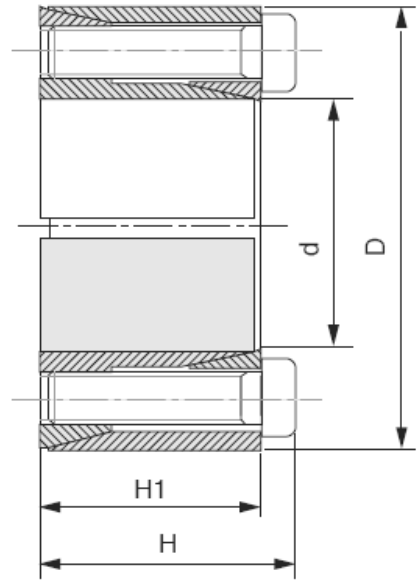
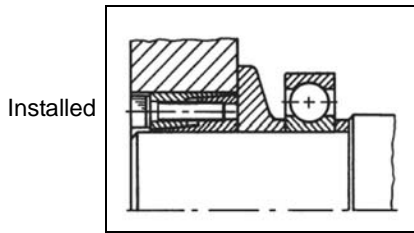
Quick Installation & Removal

Medium to Low Torque

Pre-assembled

Functions as a Press or Shrink Fit

No Loose Set Screws or Keyways



Material: C45E

Part No.	d	D	H	H1	Mounting Screws			Removal Screws		Max Transmitted		Shaft Pressure Pa (Nmm ²)	Hub Pressure Pm (Nmm ²)	Wt. kg
					NV	Torque (Nm)	Screws	NV	Screws	Torque Mt (Nm)	Thrust Ta (kN)			
KLSS10/20	10	20	16	13	M2.5x12	1.2	4	M2.5x12	2	19	3.8	89	45	.02
KLSS11/22	11	22	16	13	M2.5x12	1.2	4	M2.5x12	2	21	3.8	81	41	.02
KLSS12/22	12	22	16	13	M2.5x12	1.2	4	M2.5x12	2	23	3.8	75	41	.02
KLSS14/26	14	26	20	17	M3x16	2.1	4	M3x16	2	39	5.5	71	38	.04
KLSS15/28	15	28	20	17	M3x16	2.1	4	M3x16	2	42	5.5	66	35	.05
KLSS16/32	16	32	21	17	M4x16	4.9	4	M4x16	2	77	9.6	107	54	.07
KLSS17/35	17	35	25	21	M4x20	4.9	4	M4x20	2	82	9.6	81	40	.11
KLSS18/35	18	35	25	21	M4x20	4.9	4	M4x20	2	87	9.6	77	40	.10
KLSS19/35	19	35	25	21	M4x20	1.9	4	M4x20	2	91	9.6	73	40	.10
KLSS20/38	20	38	26	21	M5x20	10.0	4	M5x20	2	157	15.7	113	60	.12
KLSS22/40	22	40	26	21	M5x20	10.0	4	M5x20	2	173	15.7	103	57	.12
KLSS24/47	24	47	32	26	M6x24	17	4	M6x24	2	268	22.3	110	56	.21
KLSS25/47	25	47	32	26	M6x24	17	4	M6x24	2	279	22.3	105	56	.21
KLSS28/50	28	50	32	26	M6x24	17	6	M6x24	3	468	33.5	141	79	.21
KLSS30/55	30	55	32	26	M6x24	17	6	M6x24	3	502	33.5	132	72	.26
KLSS32/55	32	55	32	26	M6x24	17	6	M6x24	3	535	33.5	123	72	.25
KLSS35/60	35	60	37	31	M6x28	17	8	M6x28	4	781	44.6	125	73	.36
KLSS38/65	38	65	37	31	M6x28	17	8	M6x28	4	848	44.6	115	67	.43
KLSS40/65	40	65	37	31	M6x28	17	8	M6x28	4	892	44.6	110	67	.41
KLSS42/75	42	75	44	36	M8x34	41	6	M8x34	3	1272	60.6	122	68	.73
KLSS45/75	45	75	44	36	M8x34	41	6	M8x34	3	1363	60.6	113	68	.68
KLSS48/80	48	80	44	36	M8x34	41	8	M8x34	4	1938	80.8	142	85	.74
KLSS50/80	50	80	44	36	M8x34	41	8	M8x34	4	2019	80.8	136	85	.71