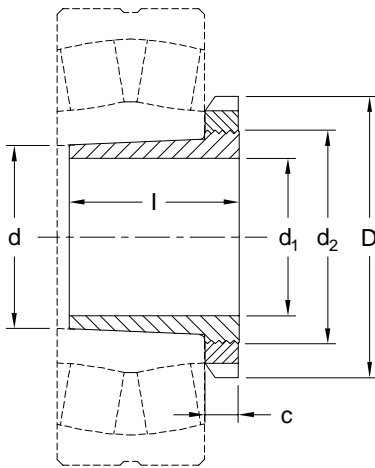


Withdrawal Sleeves



Metric Bores

AH 30, 31 and 32 Series



The removal nut must be ordered separately.

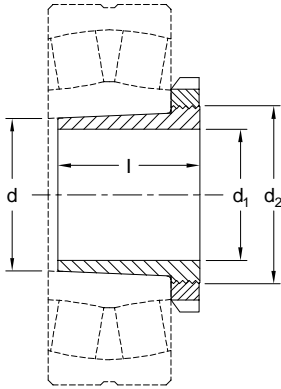
Withdrawal Sleeves, from size AH 2236 and AH 2340 are also available with oil ducts on the outer and inner diameter for hydraulic mounting.

| Part No. | Dimensions (mm) | | | | Thread | Removal Nut | C | D | Weight kg |
|----------|-----------------|----------------|----------------|-----|---------|-------------|----|-----|-----------|
| | d | d ₁ | d ₂ | l | | | | | |
| AH3024 | 120 | 110 | 130 | 60 | M130x2 | KM26 | 21 | 165 | 1.2 |
| AH3124 | 120 | 110 | 140 | 75 | M140x2 | KM28 | 22 | 180 | 1.7 |
| AH3026 | 130 | 120 | 140 | 67 | M140x2 | KM28 | 22 | 180 | 1.4 |
| AH3126 | 130 | 120 | 150 | 78 | M150x2 | KM30 | 24 | 195 | 1.9 |
| AH3028 | 140 | 130 | 150 | 68 | M150x2 | KM30 | 24 | 195 | 1.6 |
| AH3128 | 140 | 130 | 160 | 83 | M160x3 | KM32 | 25 | 210 | 2.2 |
| AH3030 | 150 | 140 | 160 | 72 | M160x3 | KM32 | 25 | 210 | 1.8 |
| AH3130 | 150 | 140 | 170 | 96 | M170x3 | KM34 | 26 | 220 | 2.7 |
| AH3032 | 160 | 150 | 170 | 77 | M170x3 | KM34 | 26 | 220 | 2.1 |
| AH3132 | 160 | 150 | 180 | 103 | M180x3 | KM36 | 27 | 230 | 3.2 |
| AH3232 | 160 | 150 | 180 | 124 | M180x3 | KM36 | 27 | 230 | 4.1 |
| AH3034 | 170 | 160 | 180 | 85 | M180x3 | KM36 | 27 | 230 | 2.4 |
| AH3134 | 170 | 160 | 190 | 104 | M190x3 | KM38 | 28 | 240 | 3.4 |
| AH3234 | 170 | 160 | 190 | 134 | M190x3 | KM38 | 28 | 240 | 4.8 |
| AH3036 | 180 | 170 | 190 | 92 | M190x3 | KM38 | 28 | 240 | 2.8 |
| AH3136 | 180 | 170 | 200 | 116 | M200x3 | KM40 | 29 | 250 | 4.2 |
| AH3236 | 180 | 170 | 200 | 140 | M200x3 | KM40 | 29 | 250 | 5.3 |
| AH3038 | 190 | 180 | 205 | 96 | Tr205x4 | HML41T | 30 | 250 | 3.4 |
| AH3138 | 190 | 180 | 210 | 125 | Tr210x4 | HM42T | 30 | 270 | 4.9 |
| AH3238 | 190 | 180 | 210 | 145 | Tr210x4 | HM42T | 30 | 270 | 5.9 |
| AH3040 | 200 | 190 | 215 | 102 | Tr215x4 | HML43T | 30 | 260 | 3.8 |
| AH3140 | 200 | 190 | 220 | 134 | Tr220x4 | HM44T | 32 | 280 | 5.5 |
| AH3240 | 200 | 190 | 220 | 153 | Tr220x4 | HM44T | 32 | 280 | 6.7 |
| AH3044 | 220 | 200 | 235 | 111 | Tr235x4 | HML47T | 30 | 280 | 7.4 |
| AH3144 | 220 | 200 | 240 | 145 | Tr240x4 | HM48T | 34 | 300 | 10.4 |
| AH3048 | 240 | 220 | 260 | 116 | Tr260x4 | HML52T | 36 | 310 | 8.8 |
| AH3148 | 240 | 220 | 260 | 154 | Tr260x4 | HM52T | 36 | 330 | 12.0 |
| AH3052 | 260 | 240 | 280 | 128 | Tr280x4 | HML56T | 30 | 330 | 10.7 |
| AH3152 | 260 | 240 | 290 | 172 | Tr290x4 | HM58T | 36 | 365 | 16.2 |
| AH3056 | 280 | 260 | 300 | 131 | Tr300x4 | HML60T | 31 | 360 | 12.0 |
| AH3156 | 280 | 260 | 310 | 175 | Tr310x5 | HM62T | 36 | 380 | 17.5 |
| AH3060 | 300 | 280 | 320 | 145 | Tr320x5 | HML64T | 32 | 380 | 14.4 |
| AH3160 | 300 | 280 | 330 | 192 | Tr330x5 | HM66T | 40 | 410 | 20.8 |
| AH3260 | 300 | 280 | 330 | 228 | Tr330x5 | HM66T | 40 | 410 | 26.0 |
| AH3064 | 320 | 300 | 345 | 149 | Tr345x5 | HML69T | 33 | 410 | 16.0 |
| AH3164 | 320 | 300 | 350 | 209 | Tr350x5 | HM70T | 42 | 430 | 24.5 |
| AH3264 | 320 | 300 | 350 | 246 | Tr350x5 | HM70T | 42 | 430 | 30.6 |
| AH3068 | 340 | 320 | 365 | 162 | Tr365x5 | HML73T | 35 | 430 | 19.5 |
| AH3168 | 340 | 320 | 370 | 225 | Tr370x5 | HM74T | 45 | 450 | 29.0 |
| AH3268 | 340 | 320 | 370 | 264 | Tr370x5 | HM74T | 45 | 450 | 35.4 |
| AH3072 | 360 | 340 | 385 | 167 | Tr385x5 | HML77T | 37 | 450 | 21.0 |
| AH3172 | 360 | 340 | 400 | 229 | Tr400x5 | HM80T | 46 | 500 | 33.0 |
| AH3272 | 360 | 340 | 400 | 274 | Tr400x5 | HM80T | 46 | 500 | 41.5 |
| AH3076 | 380 | 360 | 410 | 170 | Tr410x5 | HML82T | 39 | 480 | 23.2 |
| AH3176 | 380 | 360 | 420 | 232 | Tr420x5 | HM84T | 49 | 520 | 35.7 |
| AH3276 | 380 | 360 | 420 | 284 | Tr420x5 | HM84T | 49 | 520 | 45.6 |
| AH3080 | 400 | 380 | 430 | 183 | Tr430x5 | HML86T | 41 | 500 | 27.3 |
| AH3180 | 400 | 380 | 440 | 240 | Tr440x5 | HM88T | 51 | 540 | 39.5 |
| AH3280 | 400 | 380 | 440 | 302 | Tr440x5 | HM88T | 51 | 540 | 51.7 |
| AH3084 | 420 | 400 | 450 | 186 | Tr450x5 | HML90T | 41 | 520 | 29.0 |
| AH3184 | 420 | 400 | 460 | 266 | Tr460x5 | HM92T | 53 | 550 | 46.5 |
| AH3284 | 420 | 400 | 460 | 321 | Tr460x5 | HM92T | 53 | 550 | 58.9 |

Withdrawal Sleeves



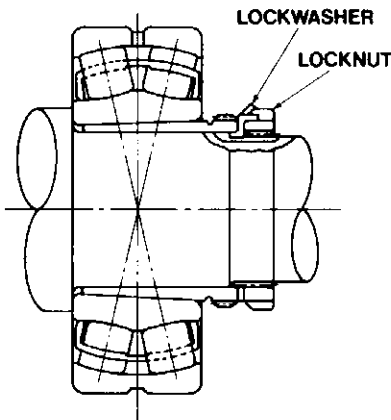
Metric Bores



The removal nut has to be ordered separately.

Withdrawal Sleeves offer a convenient mounting alternative for straight bore or adapter mounted applications.

The locknut on the shaft mounts the bearing while a locknut on the sleeve will dismount the bearing without shaft damage.



Withdrawal Sleeves, from size AH 2236 and AH 2340 are also available with oil ducts on the outer and inner diameter for hydraulic mounting.

AH22 and 23 Series

| Part No. | Dimensions (mm) | | | | Thread | Nut | Weight kg |
|----------|-----------------|----------------|----------------|-----|----------|-------|-----------|
| | d | d ₁ | d ₂ | l | | | |
| AH2308 | 40 | 35 | 45 | 40 | M45x1.5 | KM9 | 0.1 |
| AH2309 | 45 | 40 | 50 | 44 | M50x1.5 | KM10 | 0.2 |
| AH2310 | 50 | 45 | 60 | 50 | M60x2 | KM12 | 0.2 |
| AH2311 | 55 | 50 | 65 | 54 | M65x2 | KM13 | 0.3 |
| AH2312 | 60 | 55 | 70 | 57 | M70x2 | KM14 | 0.3 |
| AH2313 | 65 | 60 | 75 | 61 | M75x2 | KM15 | 0.4 |
| AH2314 | 70 | 65 | 85 | 65 | M85x2 | KM17 | 0.5 |
| AH2315 | 75 | 70 | 90 | 69 | M90x2 | KM18 | 0.6 |
| AH2316 | 80 | 75 | 95 | 72 | M95x2 | KM19 | 0.7 |
| AH2317 | 85 | 80 | 100 | 75 | M100x2 | KM20 | 0.7 |
| AH2318 | 90 | 85 | 105 | 80 | M105x2 | KM21 | 0.9 |
| AH2319 | 95 | 90 | 110 | 85 | M110x2 | KM22 | 1.0 |
| AH2320 | 100 | 95 | 120 | 90 | M120x2 | KM24 | 1.2 |
| AH2322 | 110 | 100 | 130 | 98 | M130x2 | KM26 | 2.1 |
| AH2324 | 120 | 110 | 140 | 105 | M140x2 | KM28 | 2.5 |
| AH2326 | 130 | 120 | 150 | 115 | M150x2 | KM30 | 3.0 |
| AH2328 | 140 | 130 | 160 | 125 | M160x3 | KM32 | 3.6 |
| AH2330 | 150 | 140 | 170 | 135 | M170x3 | KM34 | 4.2 |
| AH2332 | 160 | 150 | 180 | 140 | M180x3 | KM36 | 4.8 |
| AH2334 | 170 | 160 | 190 | 146 | M190x3 | KM38 | 5.3 |
| AH2236 | 180 | 170 | 200 | 105 | M200x3 | KM40 | 3.8 |
| AH2336 | 180 | 170 | 200 | 154 | M200x3 | KM40 | 5.8 |
| AH2238 | 190 | 180 | 210 | 112 | Tr 210x4 | HM42T | 4.3 |
| AH2338 | 190 | 180 | 210 | 160 | Tr 210x4 | HM42T | 6.6 |
| AH2240 | 200 | 190 | 220 | 118 | Tr 220x4 | HM44T | 4.7 |
| AH2340 | 200 | 190 | 220 | 170 | Tr 220x4 | HM44T | 7.6 |
| AH2244 | 220 | 200 | 240 | 130 | Tr 240x4 | HM48T | 9.1 |
| AH2344 | 220 | 200 | 240 | 181 | Tr 240x4 | HM48T | 13.5 |
| AH2248 | 240 | 220 | 260 | 144 | Tr 260x4 | HM52T | 11.1 |
| AH2348 | 240 | 220 | 260 | 189 | Tr 260x4 | HM52T | 15.5 |
| AH2252 | 260 | 240 | 290 | 155 | Tr 290x4 | HM58T | 14.0 |
| AH2352 | 260 | 240 | 290 | 205 | Tr 290x4 | HM58T | 19.6 |
| AH2256 | 280 | 260 | 310 | 155 | Tr 310x5 | HM62T | 15.2 |
| AH2356 | 280 | 260 | 310 | 212 | Tr 310x5 | HM62T | 21.6 |
| AH2260 | 300 | 280 | 330 | 170 | Tr 330x5 | HM66T | 18.1 |
| AH2264 | 320 | 300 | 350 | 180 | Tr 350x5 | HM70T | 20.2 |

AH30, 31 and 32 Series

| | | | | | | | |
|--------|-----|-----|-----|----|---------|------|-----|
| AH308 | 40 | 35 | 45 | 29 | M45x1.5 | KM9 | 0.1 |
| AH309 | 45 | 40 | 50 | 31 | M50x1.5 | KM10 | 0.1 |
| AH310 | 50 | 45 | 60 | 35 | M60x2 | KM12 | 0.2 |
| AH311 | 55 | 50 | 65 | 37 | M65x2 | KM13 | 0.2 |
| AH312 | 60 | 55 | 70 | 40 | M70x2 | KM14 | 0.2 |
| AH313 | 65 | 60 | 75 | 42 | M75x2 | KM15 | 0.3 |
| AH314 | 70 | 65 | 80 | 43 | M80x2 | KM16 | 0.3 |
| AH315 | 75 | 70 | 85 | 45 | M85x2 | KM17 | 0.3 |
| AH316 | 80 | 75 | 90 | 48 | M90x2 | KM18 | 0.4 |
| AH317 | 85 | 80 | 100 | 52 | M100x2 | KM20 | 0.5 |
| AH318 | 90 | 85 | 105 | 53 | M105x2 | KM21 | 0.5 |
| AH319 | 95 | 90 | 110 | 57 | M110x2 | KM22 | 0.6 |
| AH320 | 100 | 95 | 115 | 59 | M115x2 | KM23 | 0.7 |
| AH322 | 110 | 100 | 130 | 63 | M130x2 | KM26 | 1.3 |
| AH3122 | 110 | 100 | 125 | 68 | M125x2 | KM25 | 1.3 |

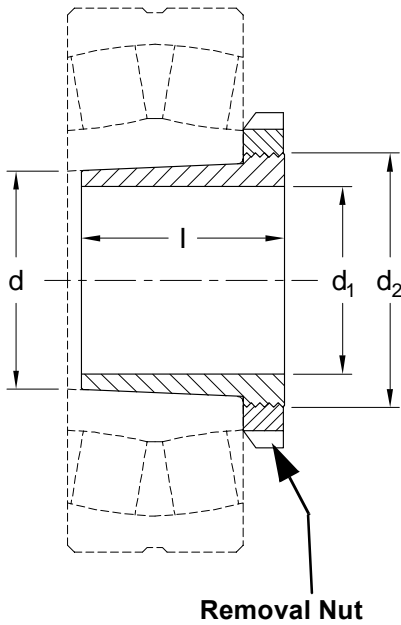
Withdrawal Sleeves

AHX30, 31 and 32 Series

Metric Bores

For 230 and 231 & 232 Series

Spherical Bearings



For 223 Series Spherical Bearings

The removal nut must be ordered separately.

Inch Bores available on request

AHX30, 31 and 32 Series

| Part No. | Dimensions (mm) | | | | Thread | Nut | Weight kg |
|----------|-----------------|----------------|----------------|-----|---------|------|-----------|
| | d | d ₁ | d ₂ | l | | | |
| AHX310 | 50 | 45 | 55 | 35 | M55x2 | KM11 | 0.1 |
| AHX311 | 55 | 50 | 60 | 37 | M60x2 | KM12 | 0.2 |
| AHX312 | 60 | 55 | 65 | 40 | M65x2 | KM13 | 0.2 |
| AHX317 | 85 | 80 | 95 | 52 | M95x2 | KM19 | 0.4 |
| AHX318 | 90 | 85 | 100 | 53 | M100x2 | KM20 | 0.5 |
| AHX3218 | 90 | 85 | 100 | 63 | M100x2 | KM20 | 0.6 |
| AHX319 | 95 | 90 | 105 | 57 | M105x2 | KM21 | 0.5 |
| AHX320 | 100 | 95 | 110 | 59 | M110x2 | KM22 | 0.6 |
| AHX3120 | 100 | 95 | 110 | 64 | M110x2 | KM22 | 0.6 |
| AHX3220 | 100 | 95 | 110 | 73 | M110 x2 | KM22 | 0.8 |
| AHX322 | 110 | 105 | 120 | 63 | M120x2 | KM24 | 0.7 |
| AHX3122 | 110 | 105 | 120 | 68 | M120x2 | KM24 | 0.8 |
| AHX3222 | 110 | 105 | 125 | 82 | M125x2 | KM25 | 1.0 |
| AHX3024 | 120 | 115 | 130 | 60 | M130x2 | KM26 | 0.8 |
| AHX3124 | 120 | 115 | 130 | 75 | M130x2 | KM26 | 0.9 |
| AHX3224 | 120 | 115 | 135 | 90 | M135x2 | KM27 | 1.3 |
| AHX3026 | 130 | 125 | 140 | 67 | M140x2 | KM28 | 0.9 |
| AHX3126 | 130 | 125 | 140 | 78 | M140x2 | KM28 | 1.1 |
| AHX3226 | 130 | 125 | 145 | 98 | M145x2 | KM29 | 1.6 |
| AHX3028 | 140 | 135 | 150 | 68 | M150x2 | KM30 | 1.0 |
| AHX3128 | 140 | 135 | 150 | 83 | M150x2 | KM30 | 1.3 |
| AHX3228 | 140 | 135 | 155 | 104 | M155x3 | KM31 | 1.8 |
| AHX3030 | 150 | 145 | 160 | 72 | M160x3 | KM32 | 1.1 |
| AHX3130 | 150 | 145 | 165 | 96 | M165x3 | KM33 | 1.8 |
| AHX3230 | 150 | 145 | 165 | 114 | M165x3 | KM33 | 2.2 |

AHX23 Series

| Part No. | Dimensions (mm) | | | | Thread | Nut | Weight kg |
|----------|-----------------|----------------|----------------|-----|--------|------|-----------|
| | d | d ₁ | d ₂ | l | | | |
| AHX2310 | 50 | 45 | 55 | 50 | M55x2 | KM11 | 0.21 |
| AHX2311 | 55 | 50 | 60 | 54 | M60x2 | KM12 | 0.25 |
| AHX2312 | 60 | 55 | 65 | 58 | M65x2 | KM13 | 0.30 |
| AHX2314 | 70 | 65 | 80 | 64 | M80x2 | KM16 | 0.47 |
| AHX2315 | 75 | 70 | 85 | 68 | M85x2 | KM17 | 0.53 |
| AHX2316 | 80 | 75 | 90 | 71 | M90x2 | KM18 | 0.60 |
| AHX2317 | 85 | 80 | 95 | 74 | M95x2 | KM19 | 0.67 |
| AHX2318 | 90 | 85 | 100 | 79 | M100x2 | KM20 | 0.78 |
| AHX2319 | 95 | 90 | 105 | 85 | M105x2 | KM21 | 0.88 |
| AHX2320 | 100 | 95 | 110 | 90 | M110x2 | KM22 | 1.0 |
| AHX2322 | 110 | 105 | 125 | 98 | M125x2 | KM25 | 1.4 |
| AHX2324 | 120 | 115 | 135 | 105 | M135x2 | KM27 | 1.6 |
| AHX2326 | 130 | 125 | 145 | 115 | M145x2 | KM29 | 2.0 |
| AHX2328 | 140 | 135 | 155 | 125 | M155x3 | KM31 | 2.3 |
| AHX2330 | 150 | 145 | 165 | 135 | M165x3 | KM33 | 2.8 |

Adapter Sleeves

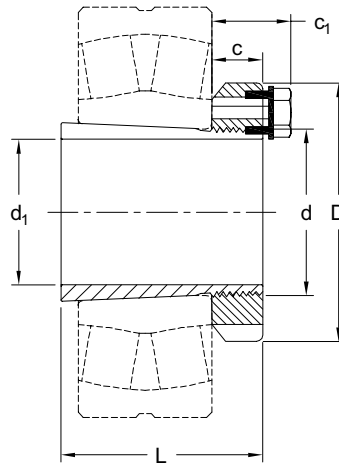


H3200 Series

**Metric & Inch Bores
With Nut and Lock Plate**



**Use with 232 Series
Spherical Bearings**



H3200 Series

Dimensions in mm

| Part No. | Metric Bore | Inch Bore | | Other Stock Bores | Dimensions (mm) | | | | | Standard Nut | Lock Plate | Lock Plate Bolt | Weight kg |
|----------|----------------|-----------------|----------------|---------------------------|-----------------|-----|-----|----|----------------|--------------|------------|-----------------|-----------|
| | d ₁ | Part No. | d ₁ | | d | L | D | c | c ₁ | | | | |
| H3248 | 220 | H3248 x 8-15/16 | 8-15/16 | 9 | 240 | 199 | 300 | 34 | 50 | HM 3148 | MS3148 | M8 x 16 | 18 |
| H3252 | 240 | H3252 x 9-1/2 | 9-1/2 | 9-7/16 | 260 | 221 | 330 | 36 | 51 | HM3152 | MS3152 | M8 x 16 | 21 |
| H3256 | 260 | H3256 x 10 | 10 | 9-15/16, 10-7/16, 10-1/2 | 280 | 223 | 350 | 38 | 53 | HM3156 | MS3156 | M8 x 16 | 23 |
| H3260 | 280 | H3260 x 11 | 11 | 10-15/16 | 300 | 240 | 380 | 40 | 54 | HM3160 | MS3160 | M10 x 30 | 34 |
| H3264 | 300 | H3264 x 12 | 12 | 11-7/16, 11-1/2, 11-15/16 | 320 | 258 | 400 | 42 | 55 | HM3164 | MS3164 | M10 x 30 | 40 |
| H3268 | 320 | H3268 x 12-1/2 | 12-1/2 | 12-7/16 | 340 | 288 | 440 | 55 | 70 | HM3168 | MS3168 | M12 x 25 | 55 |
| H3272 | 340 | H3272 x 13 | 13 | 12-15/16, 13-7/16, 13-1/2 | 360 | 299 | 460 | 58 | 73 | HM3172 | MS3172 | M12 x 25 | 61 |
| H3276 | 360 | H3276 x 14 | 14 | 13-15/16 | 380 | 310 | 490 | 60 | 75 | HM3176 | MS3176 | M12 x 25 | 70 |
| H3280 | 380 | H3280 x 15 | 15 | 14-15/16 | 400 | 328 | 520 | 62 | 77 | HM3180 | MS3180 | M16 x 30 | 76 |
| H3284 | 400 | H3284 x 15-3/4 | 15-3/4 | — | 420 | 352 | 540 | 70 | 85 | HM3184 | MS3184 | M16 x 30 | 94 |
| H3288 | 410 | H3288 x 16-1/2 | 16-1/2 | — | 440 | 361 | 560 | 70 | 85 | HM3188 | MS3188 | M16 x 30 | 118 |
| H3292 | 430 | H3292 x 17 | 17 | — | 460 | 382 | 580 | 75 | 90 | HM3192 | MS3192 | M16 x 30 | 132 |
| H3296 | 450 | H3296 x 18 | 18 | — | 480 | 397 | 620 | 75 | 90 | HM3196 | MS3196 | M16 x 30 | 152 |

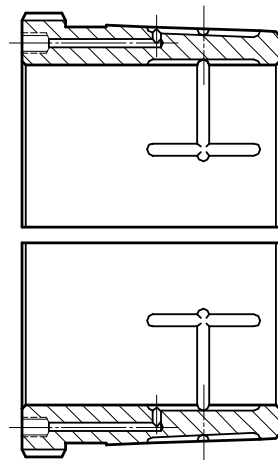
Note: Larger Adapters on request. Sizes to H32/1000 possible. Hydraulic Nuts - - E are also available to assist in bearing mounting. See Hydraulic Nut page. Sleeves also available as Hydraulic OH Series Adapters.

Hydraulic Adapter Sleeves

Nuts and Withdrawal Sleeves

Hydraulic Adapter Sleeves and Withdrawal Sleeves are available on bores that exceed 200mm (8" inch). Adding this feature to smaller units is possible when requested.

The oil channels allow hydraulic fluid to expand the bearing inner ring slightly to assist installation and removal. Hydraulic nuts to assist installation are also available.



Hydraulic Adapter Sleeve



Hydraulic Withdrawal Sleeve



Hydraulic Nut