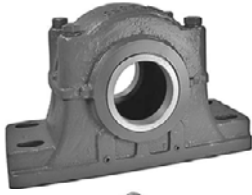


# More Split Pillow Blocks & Special Purpose Units



SAF and SDAF blocks for 222, 230, 231 and 232 series spherical roller bearings thru 18" shaft diameter are stock and larger sizes are available on request. Smaller sizes will accommodate double row ball bearings for high speed applications. Ductile Iron and Cast steel housing are also available, with stock typical on the popular sizes. Each have taconite seals and end cover options.



SDAF Asymmetric Series Split Blocks allow the spherical bearing to be positioned closer to the shaft locking device which reduces the resultant bending moment. Typically these split blocks are used on shaft sizes that exceed 18" diameter. However smaller units of this asymmetric design are also possible. Housings can be provided in Cast Iron, Ductile Iron or Cast Steel and for 231 and 232 large bore spherical roller bearings. The SE vertical labyrinth sealed units include an internal contact lip seal.



The new SNG Metric Plummer blocks interchange with the PTI SNHF series. Some additional seals are available for both the SNG 500 and SNG 600 series (for 222 and 223 series spherical bearings). Like the SAF series, the SNG will accommodate double row ball bearings for high speed applications. With the SNG unit, it will also accommodate 200 Series block requirements (direct mount) using felt seals and straight bore spherical bearings. FSSNG 4-Bolt Base units also available. SN 500, 600, 200 and 300 Series Metric Blocks are also available from stock.



The S3000 and SD3100 Series are both large bore adapter mounted Metric Plummer Blocks, designed for 230 and 231 Series Spherical Bearings. The SD units are available in cast iron, ductile and cast steel to 380mm shaft diameter. The S3000 Blocks are typically cast iron and available in ductile on request and thru 260mm Shaft diameter. These blocks are industry standard European Metric designs. Taconite seals and End Covers also available.



HSPA Take-Up Units are generally made to order and can be provided in shaft sizes thru 360 mm. Standard units accommodate 230, 222, 231 or 232 series tapered bore spherical bearings. These are normally used in pairs to tension large overland conveyor belt systems. Custom dimensions are possible to accommodate existing guides.



HFO & HFOE units are specifically designed for high speed fans intended for oil lubrication. Internal slingers distribute the oil lubricant evenly. Oil sight glasses are included for monitoring lubrication levels. These units will also accommodate oil circulation systems. Direct mount (straight bore) spherical bearings are the standard units. Housings for taper bore (adapter mount) bearings are available on request. Standard units are normal stock thru 170mm shaft diameters. Larger sizes on request. Housings are typically cast iron; ductile iron is available on request.

## Custom Housings

PTI will modify existing housings to accommodate special mounting or application requirements. Customized cast housing shapes and features are also possible.



Oil Sight Glass



Optional Thermal Sensors on the name plate allow a quick visual of the operating temperatures. Sensors can be fitted to the name plate.



PTI can provide housings prepared to receive vibration and thermal sensors.

