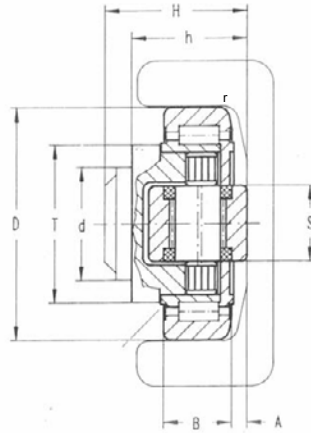


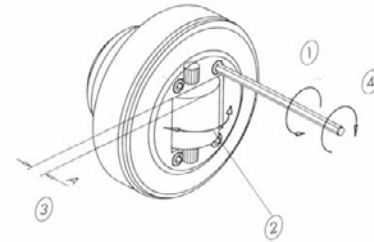
WINKEL Combined Bearings

Adjustable Eccentric Axial Bearing



Adjusting The Eccentric Axial Bearing

Size W-4.455 thru W-4.463. All with 2RS Seals.



1. Loosen screws.
2. Turn axial bearing (eccentric axial will be turned).
3. Check distance A and Repeat Step 2 as needed.
4. Retighten screws.

Special Stud Extensions available on request.

Bearings are lubricated for life

Standard Adjustable Eccentric Axial Bearing

Bearing only Part No.	Bearing with Rectangular Flange Part No.	Bearing with Square Flange Part No.	Dimensions										Wt. kg	Profile Part No.
			A mm	B mm	d (-0.05mm)	D* mm	h mm	H mm	r mm	S mm	T mm	RPM max		
W-4.454	W-4.454/AP0	W-4.454/AP0-Q	4-5.5	20.0	30	62.5	30.5-32	37.5-39	3	20	42	900	0.53	W-0Nb
W-4.455	W-4.455/AP1	W-4.455/AP1-Q	4-5.5	23.0	35	70.1	36-37.5	44-45.5	4	20	48	800	0.80	W-1Nb W-3018
W-4.456	W-4.456/AP2	W-4.456/AP2-Q	3.5-5	23.0	40	78.0	37-38.5	48-49.5	4	26	54	800	1.00	W-2Nb
W-4.457	**	**	3.5-5	23.0	40	78.3	29-30.5	40-41.5	4	26	54	800	0.87	W-3019
W-4.458	W-4.458/AP3.1	W-4.458/AP3-Q	4-5.5	30.0	45	88.4	44-45.5	57-58.5	4	26	59	750	1.62	W-3Nb W-3020
W-4.459	**	**	4.5-6.5	26.0	50	101.6	33-35	46-48	3	30	69	700	1.74	W-2912
W-4.460	**	**	4-6	31.0	55	108.5	40-42	54-56	5	30	69	650	2.27	W-3100
W-4.461	W-4.461/AP4	W-4.461/AP4-Q	4-6	31.0	60	107.7	55-57	69-71	5	30	69	650	2.82	W-4Nb
W-4.462	W-4.462/AP4	W-4.462/AP4-Q	5-9	37.0	60	123.0	56-60	72.3-76.3	5	34	80	550	3.60	W-5Nb W-3353
W-4.463	W-4.463/AP6	W-4.463/AP6-Q	6-10	45.0	60	149.4	58.5-62.5	78.5-82.5	3	34	108	450	6.30	W-6Nb
W-4.085	—	W-4.085/AP90-Q	6.5-9.5	57.3	100	180.0	76.3-79.3	95.7-98.7	3	60	124	100	11.50	W-8Nb

Profile & Bearing Load Ratings

CAD Drawing Download: www.winkel.de

Bearing only Part No.	Profile		Max Static Radial Load on Profile F_R kN		Max Static Axial Load on Profile F_A kN		Dynamic Load Capacity of Radial Brg C kN	Static Load Capacity of Radial Brg C_0 kN	Dynamic Load Capacity of Axial Brg C_A kN	Static Load Capacity of Axial Brg C_{0A} kN
	C-Profile	I-Profile	C-Profile	I-Profile	C-Profile	I-Profile				
W-4.454	0 Nb	—	9.40	—	3.10	—	31.0	35.5	11	11
W-4.455	1 Nb	3018	11.30	11.30	3.73	3.73	45.5	51.0	11	11
W-4.456	2 Nb	—	11.72	—	3.87	—	48.0	56.8	18	18
W-4.457	—	3019	—	11.72	3.87	3.87	48.0	56.8	18	18
W-4.458	3 Nb	3020	20.47	20.47	6.76	6.76	68.0	72.0	23	23
W-4.459	—	2912	—	20.11	—	6.70	73.0	82.0	25	27
W-4.460	—	3100	—	21.68	—	7.16	81.0	95.0	31	36
W-4.461	4 Nb	—	21.68	—	7.16	—	81.0	95.0	31	36
W-4.462	5 Nb	3353	30.92	24.70	10.20	10.20	110.0	132.0	43	50
W-4.463	6 Nb	—	54.02	—	17.80	—	151.0	192.0	68	71
W-4.085	8 Nb	—	76.00	—	22.80	—	207.0	243.0	73	83

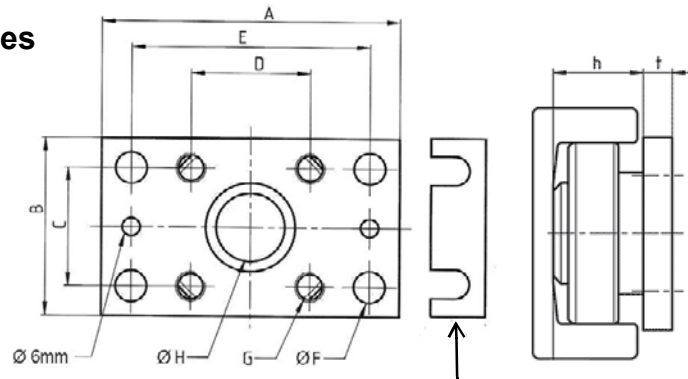
Note: * OD has a slight crown to accommodate misalignments. ** Flange Plates available on request.

WINKEL Combined Bearings

Adjustable Eccentric Axial Bearing



Rectangular Flange Plates



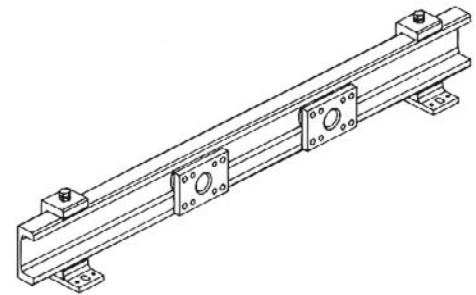
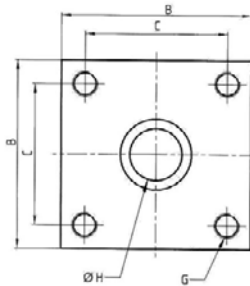
Square Flange Plates



Adjustment Shim

Clamp Flange

Flange Plate Detail



Bearing with Rectangular Flange Plate Part No.	Bearing with Square Flange Plate Part No.	Dimensions										Flange Plate Only	
		A mm	B mm	C mm	D mm	E mm	ØF mm	G	ØH mm	h mm	t mm	Rectangular Part No.	Square Part No.
W-4.454/AP0	W-4.454/AP0-Q	100	60	40	40	80	10.5	M10	30	30.5	10	W-AP0	W-AP0-Q
W-4.455/AP1	W-4.455/AP1-Q	120	80	50	50	90	12.5	M12	35	36.0	15	W-AP1	W-AP1-Q
W-4.456/AP2	W-4.456/AP2-Q	120	80	50	50	90	12.5	M12	40	36.5	15	W-AP2	W-AP2-Q
W-4.458/AP3.1	—	160	100	60	60	120	17.0	M16	45	44.0	20	W-AP3.1	—
—	W-4.058/AP3-Q	—	120	90	—	—	—	M16	45	44.0	20	—	W-AP3-Q
W-4.461/AP4	W-4.461/AP4-Q	180	120	80	80	140	17.0	M16	60	55.0	20	W-AP4	W-AP4-Q
W-4.462/AP4	W-4.462/AP4-Q	180	120	80	80	140	17.0	M16	60	56.0	20	W-AP4	W-AP4-Q
W-4.463/AP6	W-4.463/AP6-Q	200	150	100	100	160	17.0	M16	60	58.5	20	W-AP6	W-AP6-Q
—	W-4.085/AP90-Q	—	190	150	—	—	—	M20	100	64.5-67.5	28	—	W-AP90-Q

Adjustment Shims for Flange Bearings

Bearing Size	0.5 mm Shim Part No.	1.0 mm Shim Part No.
W-4.454	W-DS-0-0.5	W-DS-0-1.0
W-4.455	W-DS-1-0.5	W-DS-1-1.0
W-4.456	W-DS-2-0.5	W-DS-2-1.0
W-4.458	W-DS-3-0.5	W-DS-3-1.0
W-4.461	W-DS-4-0.5	W-DS-4-1.0
W-4.462	W-DS-4-0.5	W-DS-4-1.0
W-4.463	W-DS-6-0.5	W-DS-6-1.0
W-4.085	W-DS-90-0.5	W-DS-90-1.0

Clamp Flanges for Mounting Profile

Part No.	Profile Size
W-KF 0	0 Nb
W-KF 1	1 Nb
W-KF 2	2 Nb
W-KF 3	3 Nb
W-KF 4	4 Nb

See Clamp Flange Section for Dimensions

Precision Adjustable Eccentric Axial Bearings for Precision Profile

Bearing Only Part No. *	Bearing with Rectangular Flange Part No.	Bearing with Square Flange Part No.	D Bearing OD	Profile Size
W-PR4.454	W-PR4.454/AP0	W-PR4.454/AP0-Q	64.8	W-PR0Nb
W-PR4.455	W-PR4.455/AP1	W-PR4.455/AP1-Q	73.8	W-PR1Nb
W-PR4.456	W-PR4.456/AP2	W-PR4.456/AP2-Q	81.8	W-PR2Nb
W-PR4.458	W-PR4.458/AP3.1	W-PR4.458/AP3-Q	92.8	W-PR3Nb
W-PR4.461	W-PR4.461/AP4	W-PR4.461/AP4-Q	111.8	W-PR4Nb
W-PR4.462	W-PR4.462/AP4	W-PR4.462/AP4-Q	127.8	W-PR5Nb
W-PR4.463	W-PR4.463/AP6	W-PR4.463/AP6-Q	153.8	W-PR6Nb
W-PR4.085	—	W-PR4.085/AP90-Q	184.8	W-PR8Nb

Note: *PR Bearing Load Ratings & Profile Ratings are the same as standard units.